

SPRING GX

Call for PhD applicants for admission in Autumn 2025

Application Period July 11, 2025 (Fri)–July 31, 2025 (Thu)

The University of Tokyo **"Fostering Advanced Human Resources to Lead Green Transformation (GX)" project** (Project officer : Professor Shin-ichi Ohkoshi) supported by support for Pioneering Research Initiated by Next Generation (SPRING) of Japan Science and Technology Agency (JST), is a project involving approximately **1,315 doctoral students** (including those in 4-year doctoral programs) from across the university. New SPRING GX has started in April 2024.

We are calling **100 students entering the doctoral course in Autumn 2025.**

Recruitment number

**Prospective doctoral students
for admission in Autumn 2025**

(including 4-year doctoral course)

ca. 100 students

**M2 students currently enrolled
in WINGS* are also eligible**

*World-leading Innovative Graduate Study Program

Open to students of all fields!

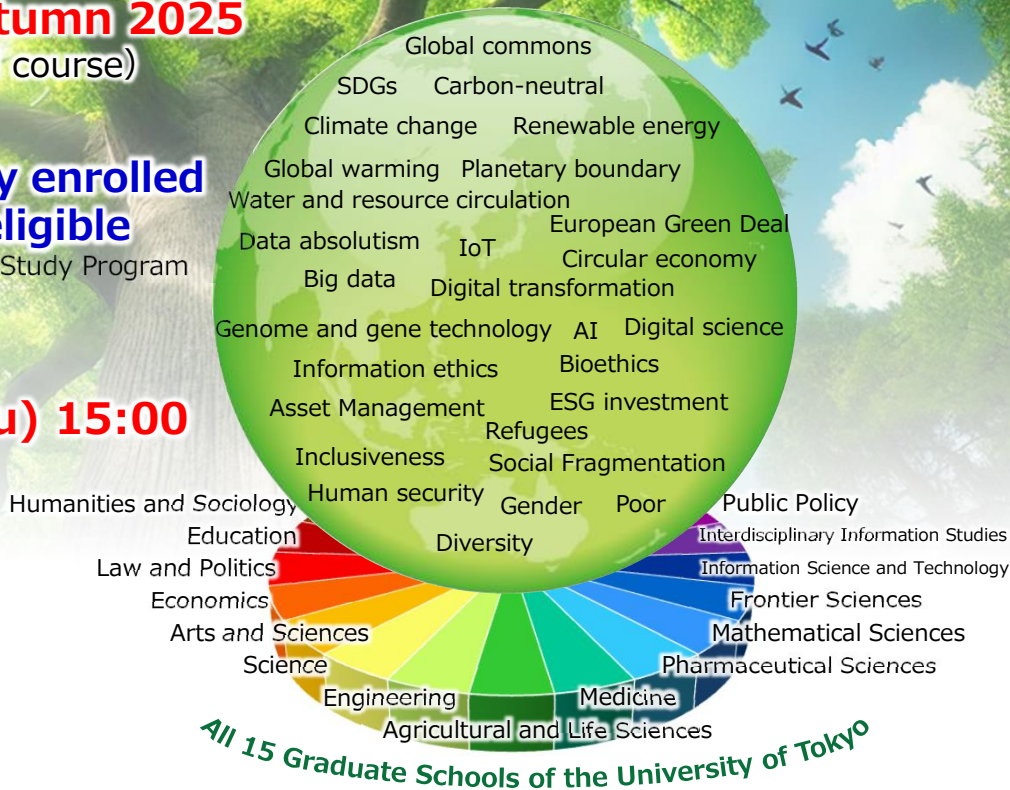
Application Period

July 11, 2025 (Fri)

– July 31, 2025 (Thu) 15:00

Financial Support

180,000 yen per month will be provided as a research incentive / Research expenses of 360,000 yen per year will be provided / Overseas travel expenses, etc., will be paid through a review process



**In order to solve global issues, we must confront
and solve a wide variety of problems across all fields!**

Aims and Contents of the PhD Student Support Project

The project (SPRING GX) aims to produce globally competent researchers who will contribute to realizing a Green Transformation (GX) in all fields on a large scale. The University of Tokyo will invest all existing assets to (1) create an environment where students with deep expertise and high-level research ability can freely conduct challenging and emergent research to feed their curiosity, (2) foster an "awakened culture" where GX encompasses of the future vision of society and each student's own research is related to societal issues, and (3) develop transferable skills to fully demonstrate professional abilities in society. For this purpose, three core programs and advanced skill training programs will be developed to realize a high portability of the student support environment.

Project HP



Recruitment HP



Project officer:
Shin-ichi Ohkoshi