

The University of Tokyo, Komaba

Prospectus 2010



Prospectus 2010

The University of Tokyo, Komaba

CONTENTS

ORIGIN AND HISTORY	3
CHRONOLOGY	8
DEANS PAST AND PRESENT	10
EXECUTIVE STAFF	11
ORGANIZATION	12
ADMINISTRATION OFFICES	13
TEACHING AND INSTRUCTION	14
FACILITIES AND SERVICES	20
EDUCATIONAL AND RESEARCH PROGRAMS	40
REGULAR PUBLICATIONS	43
STATISTICS	49
UNIVERSITY FACILITIES AROUND TOKYO	51
CAMPUS MAP	52
ACADEMIC CALENDAR	53

ORIGIN AND HISTORY

Organization

The Komaba Campus of the University of Tokyo is comprised of the College of Arts and Sciences, the Graduate School of Arts and Sciences, the Graduate School of Mathematical Sciences, and a number of advanced research facilities and campus services. What is now the College of Arts and Sciences was founded on May 31, 1949, when the new University of Tokyo started under the present system. Unlike general education sections in other national universities all over Japan, the College was established as an autonomous institution from the very beginning. In addition to its role in educating first- and second-year undergraduate students in the Junior Division, the College established its own Senior Division for third- and fourth-year students and, later, the Graduate School. The guiding spirits behind this special independence were the late Tadao Yanaihara, the first Dean of the College, and his colleagues, who believed in an integrated approach to learning and in “fostering the spirit of a life-long quest for truth”, whereby “unbiased individuals with all-round knowledge” would be trained.

The Senior Division duly commenced in 1951 with the inauguration of the Department of Liberal Arts. The aim was to introduce new interdisciplinary approaches to the academic convention of compartmentalized specialties, a challenge which has been met by the practice of the Department in its education and research. The Department of Basic Sciences was established in 1962 in order to offer advanced courses in the fundamentals of natural sciences. Expanding steadily, the Department of Liberal Arts was reorganized into three sections in 1977. The Department of Basic Sciences was also restructured in 1981, with one section specializing in Pure and Applied Sciences and the other in Natural and Artificial Systems.

Turning to graduate provision, some parts of the University's graduate programs have in fact been provided at the Komaba Campus ever since the College produced its first graduates. In 1983, however, the College instituted its own Graduate Division of International and Interdisciplinary Studies. This comprised four programs: Comparative Literature and Culture, Area Studies, International Relations, and Social Relations. Three more programs, Cultural Anthropology, Multi-Disciplinary Sciences, and Culture and Representation were later added.

One important development in recent years has thus been a



Clock Tower, Bldg. 1

change in the College's emphasis from undergraduate to graduate education. This increased commitment to advanced contemporary research obviously involves major decisions at graduate school level about the allocation of both personnel and budgetary resources. All faculty members, for example, are now affiliated with the Graduate Division, while remaining fully responsible for undergraduate education. The new focus on graduate education within the College is a reflection of changing circumstances in higher education in Japan today: a higher percentage of high school graduates entering college, a consequent need for more specialized postgraduate education to serve both college-age students and those already in professional careers, and an increasing social responsibility in graduate education to provide new intellectual paradigms to deal with a rapidly changing world. In specific institutional terms, this reinforcement of graduate research and educational capabilities entails not only full-scale reassignment of faculty members and a redesigned curricular structure, but also an expanded recruitment base for prospective students, and government approval and funding from the Ministry of Education.

The next phase of restructuring began with the creation of Language and Information Sciences (1993). In 1994-95, Multi-Disciplinary Sciences was expanded to embrace Life Sciences, Basic Science, and General Systems Studies. In 1996 the existing six programs in Humanities and Social Sciences were reorganized into the three sections of Interdisciplinary Cultural Studies, Area Studies, and Advanced Social and International Studies, thus completing the restructuring of the College's graduate division (renamed the Graduate School of Arts and Sciences in 1996).

The Graduate School of Arts and Sciences, with these newly restructured programs, has been successful in fostering the intellectual initiative of students, thereby providing them with insights into the latest trends in learning and with the ability to cross disciplinary boundaries in fruitful ways. The Ministry of Education has duly acknowledged our educational and research achievements and has adopted a number of our "Center-of-Excellence" (COE) projects: "The University of Tokyo Center for Philosophy" (in 2002 and 2007), the "Research Center for Integrated Science" (2002), and the "Center for Evolutionary Cognitive Science" (2003).

In 1992, the Graduate School of Mathematical Sciences was established at the Komaba Campus as an independent institution.



Tadao YANAIHARA

However, nearly half of the members of the faculty of this division are also responsible for teaching courses in the Junior Division and its representatives attend the faculty meeting of the College of Arts and Sciences.

A number of special research and teaching facilities are also located on the Komaba Campus. The Komaba Branch of the Educational Computer Center, originally opened in 1987, was reorganized into the Information Technology Center in 1999. The institute originally established as the Center for American Studies in 1967 and reorganized into the Center for Pacific and American Studies in 2000 has now become the core component of the new Institute for Advanced Global Studies, which was opened in April 2010. The Komaba Organization for Educational Development (KOMED), which was established in 2005, merged with the Center for Structuring Life Sciences to become the Komaba Organization for Educational Excellence in April 2010.

The history of the Komaba Campus has therefore been one of growth. When it started in 1949, the Junior Division had two sections each for human sciences and natural sciences. Currently there are three sections for each branch, and the total enrollment in the Junior Division is 6,570, double what it was in 1949. There are 428 students in the Senior Division, and 1,357 (master's and doctoral) in the Graduate School of Arts and Sciences. The official members of faculty, including professors, associate professors, and full-time lecturers, numbered 278 as of May 1, 2010, which is about three and a half times as many as in the first year of the College's existence.

Campus

The Komaba Campus has a long and intriguing history. The campus and its environs were formerly called the Komaba Meadows, the whole area having been set aside as hunting grounds for the Tokugawa family from the time of the eighth Shogun Yoshimune (early 18th century). According to tradition, the estate included a medicinal herb garden as well. The Meadows covered 50 hectares of land, extending over what is now Komaba Park. There is still a small spring in the campus, reminding us of the way ancient Musashino must have looked.

In 1878, against the background of the Meiji Restoration, the Komaba School of Agriculture was established at the northwest-

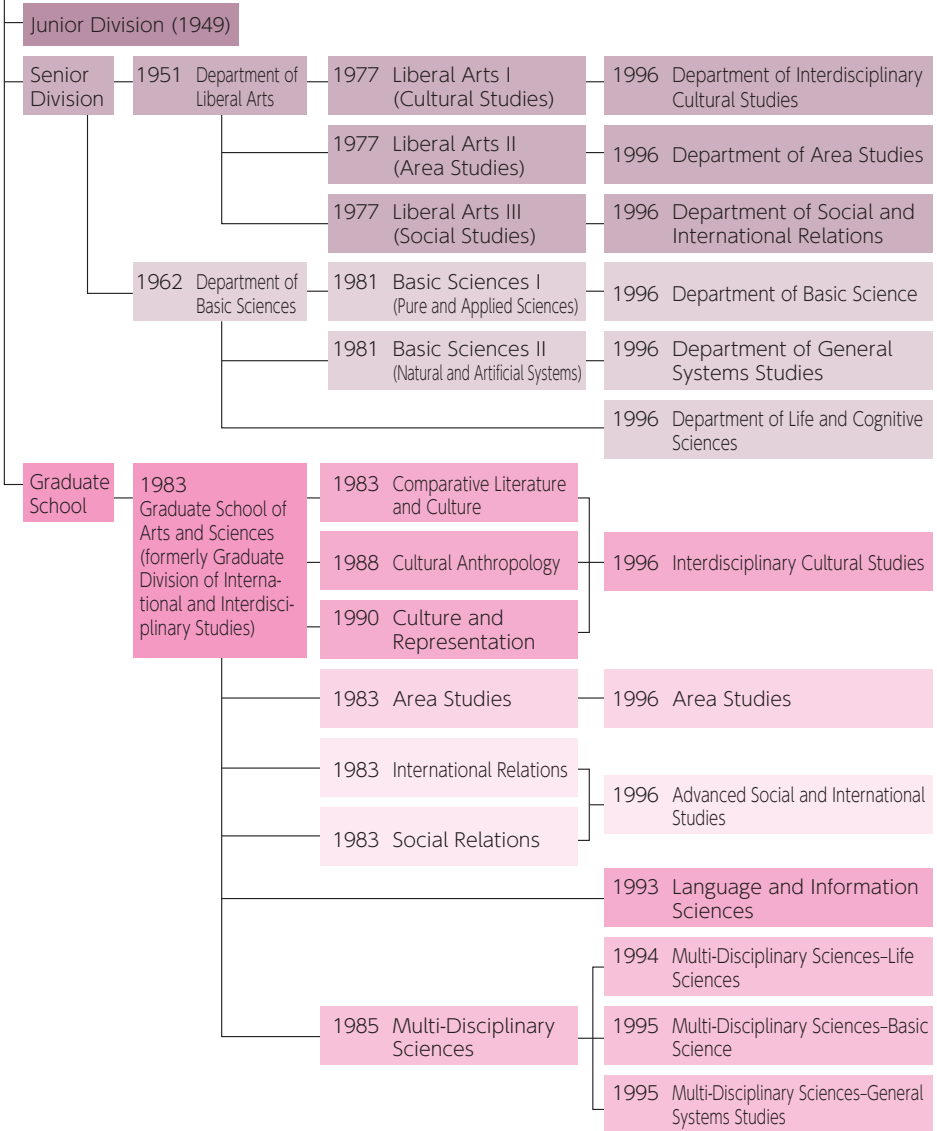
ern corner of the grounds, where the College now stands. This School was eventually incorporated into the Tokyo Imperial University, the predecessor of the University of Tokyo, as the Faculty of Agriculture in 1890. Some of the buildings of the school were destroyed by fire during World War II, and the others were all demolished later.

In 1935 the Faculty of Agriculture was transferred to grounds adjacent to the Hongo Campus, and its place was assumed by the Dai-ichi Koto Gakko, the preeminent three-year preparatory college for admission into Imperial Universities. At about the same time, new buildings were constructed at Komaba, following the architectural styles used for the Hongo Campus. When the Dai-ichi Koto Gakko was incorporated into the postwar University of Tokyo, the Komaba Campus finally became the seat of the University's College of General Education, which was later renamed the College of Arts and Sciences.

The College thus began its life with what was left of the war-damaged buildings of the Dai-ichi Koto Gakko and some temporary structures built after World War II. In addition to renovating these buildings, the College also made great efforts to restore and expand the campus gardens. This is one of the reasons why the Komaba Campus boasts so many old trees, including some very rare ones. Many of the famous cherry trees on the campus, including those adorning the edges of the Rugby Field, were planted after the war. Since 1980, new construction projects have been undertaken, changing the face of the western part of the campus. Recently, with the construction of Campus Plaza and Komaba Communication Plaza in the eastern part of the campus, the whole of Komaba is developing a new image.



The College of Arts and Sciences, the University of Tokyo (1949) incorporating Dai-ichi Koto Gakko (est. 1886) and Tokyo Koto Gakko (est. 1921)



CHRONOLOGY

- May 1949 College of General Education (Kyoyo Gakubu) established by amalgamating Dai-ichi Koto Gakko and Tokyo Koto Gakko, to form part of the University of Tokyo (formerly Tokyo Imperial University) under the new National University Establishment Law.
- July 1949 First matriculation of students at the College of General Education (1,804 entered including 9 women).
- March 1950 Dai-ichi Koto Gakko abolished.
- March 1951 Tokyo Koto Gakko abolished.
- April 1951 Department of Liberal Arts (Kyoyo Gakka) established in the College.
- June 1952 Students' Clinic opened.
- March 1953 Graduation of the first class of students of the University under the new system, including 51 Bachelors of Liberal Arts, from the College.
- April 1953 Student Counseling Center opened.
- April 1962 Department of Basic Sciences (Kiso Kagakuka) established in the Senior Division of the College.
- April 1964 Komaba Department of the Administration Bureau created (General Affairs, Academic Affairs, and Student Affairs Divisions).
- July 1965 "Komaba-Todai-Mae" station on the Inokashira Line inaugurated, replacing "Komaba" and "Todai-Mae" stations.
- January 1967 Students' Clinic reorganized as the Komaba Branch of the newly-established Health Service Center of the University.
- June 1967 The Center for American Studies established.
- April 1975 Library Division established.
- April 1977 Reorganization of the Department of Liberal Arts.
- July 1979 30th anniversary of the establishment of the College celebrated.
College of General Education: The First Thirty Years published.
- April 1981 Reorganization of the Department of Basic Sciences.
Finance Division established.
- April 1983 Graduate Division of International and Interdisciplinary Studies (Sogo Bunka Kenkyuka) established in the College.
College of General Education renamed College of Arts and Sciences.
- April 1987 Komaba Branch of the Educational Computer Center opened.
- July 1989 40th anniversary of the establishment of the College celebrated.
College of Arts and Sciences: The First Forty Years published.
- October 1989 Academic Guidance Center opened.
- April 1992 Graduate School of Mathematical Sciences established.
- April 1993 Graduate Department of Language and Information Sciences established.
New curriculum for the Junior Division of the College implemented.
- June 1993 Mitaka International Hall of Residence opened (Komaba Student Dormitory abolished).

- April 1994 Graduate Department of Multi-Disciplinary Sciences–Life Sciences established.
Reorganization of Graduate Department of Multi-Disciplinary Sciences–Basic Science, and Department of Multi-Disciplinary Sciences–General Systems Studies begun.
- April 1995 Graduate Departments of Multi-Disciplinary Sciences–Basic Science, and Multi-Disciplinary Sciences–General Systems Studies restructured.
- February 1996 Graduate Division of International and Interdisciplinary Studies renamed Graduate School of Arts and Sciences.
- April 1996 Graduate Programs of Comparative Literature and Culture, Cultural Anthropology, and Culture and Representation integrated and restructured as Interdisciplinary Cultural Studies. Graduate Programs of Social Relations and International Relations integrated and restructured as Advanced Social and International Studies. Graduate Program of Area Studies restructured into a department. (Restructuring of the Graduate School of Arts and Sciences completed.)
Undergraduate (Senior) Department of Liberal Arts reorganized into Department of Interdisciplinary Cultural Studies, Department of Area Studies, and Department of Social and International Relations. Department of Basic Sciences reorganized into Department of Basic Science, Department of General Systems Studies, and Department of Life and Cognitive Sciences.
- April 1999 Komaba Branch of the Educational Computer Center reorganized into the Information Technology Center.
- April 2000 Center for American Studies reorganized into the Center for Pacific and American Studies.
- November 2000 College of Arts and Sciences 50th Anniversary Symposium : “Exploring the Role of the University in the 21st Century.”
- December 2001 *Fifty Years of Komaba, 1949-2000* published.
- October 2002 Opening of the new Komaba Library.
- April 2004 The University of Tokyo reorganized as an incorporated national university.
- April 2005 Komaba Organization for Educational Development established.
- April 2006 New curriculum for the Junior Division of the College implemented.
The North Building of Komaba Communication Plaza opened.
- July 2006 Administration offices restructured.
- December 2006 The whole complex of Komaba Communication Plaza opened.
- March-October 2009 Commemoration of the 60th anniversary of the establishment of the College of Arts and Sciences.
- April 2010 Komaba Organization for Educational Excellence and Institute for Advanced Global Studies established.

DEANS PAST AND PRESENT

DEANS Tadao YANAIHARA (May 31, 1949–December 13, 1951)
Isoji ASO (Acting, December 14, 1951–December 20, 1951)
Isoji ASO (December 21, 1951–December 21, 1952)
Teiji TAKAGI (December 22, 1952–March 30, 1954)
Naoshiro TSUJI (March 31, 1954–March 31, 1958)
Atsushi KAWAGUCHI (April 1, 1958–March 31, 1960)
Natsuo SHUMUTA (April 1, 1960–March 31, 1963)
Shigeru AIHARA (April 1, 1963–March 31, 1966)
Akio ABE (April 1, 1966–March 31, 1968)
Mokichiro NOGAMI (April 1, 1968–November 13, 1968)
Jiro TAMURA (November 14, 1968–February 13, 1969)
Sachio TAKAGI (Acting, February 14, 1969–February 19, 1969)
Tadashi TAKAHASHI (February 20, 1969–May 25, 1969)
Tasuku HARA (May 26, 1969–March 31, 1971)
Hajime YAMASHITA (April 1, 1971–March 13, 1972)
Sachio TAKAGI (March 14, 1972–March 13, 1974)
Hiroshi KOYAMA (March 14, 1974–March 13, 1976)
Shozo OMORI (March 14, 1976–December 31, 1977)
Motoo KAJI (January 1, 1978–December 31, 1979)
Hiroshi ISODA (January 1, 1980–December 31, 1981)
Nagayo HONMA (January 1, 1982–December 31, 1983)
Shoichiro KOIDE (January 1, 1984–January 9, 1985)
Hideo MOHRI (Acting, January 10, 1985–February 15, 1985)
Akira TAKEDA (February 16, 1985–February 15, 1987)
Hideo MOHRI (February 16, 1987–February 15, 1989)
Koichi AOYAGI (February 16, 1989–February 15, 1991)
Yoshiya HARADA (February 16, 1991–February 15, 1993)
Shigehiko HASUMI (February 16, 1993–February 15, 1995)
Munetake ICHIMURA (February 16, 1995–February 15, 1997)
Wataru OMORI (February 16, 1997–February 15, 1999)
Setsuro ASANO (February 16, 1999–February 15, 2001)
Motoo FURUTA (February 16, 2001–February 15, 2003)
Makoto ASASHIMA (February 16, 2003–February 15, 2005)
Yoichi KIBATA (February 16, 2005–February 15, 2007)
Norimichi KOJIMA (February 16, 2007–February 15, 2009)
Susumu YAMAKAGE (February 16, 2009–present)



EXECUTIVE STAFF (2010)

Dean, Graduate School of Arts and Sciences
Dean, College of Arts and Sciences
Senator, Vice-Dean
Vice-Dean

Susumu YAMAKAGE
Susumu YAMAKAGE
Masakazu SHIMADA
Yojiro ISHII

Graduate Division

Head, Graduate Dept. of Language and Information Sciences
Head, Graduate Dept. of Interdisciplinary Cultural Studies
Head, Graduate Dept. of Area Studies
Head, Graduate Dept. of Advanced Social and International Studies
Head, Graduate Dept. of Multi-Disciplinary Sciences
Head, Life Sciences Program
Head, Basic Sciences Program
Head, General Systems Studies Program

Naoki OGOSHI
Yoshikatsu KAWANAGO
Tomoharu SHIROTA
Tetsuya SAKAI
Motoyuki MATSUO
Yoshihiko TANNO
Takehiko HASHIMOTO
Hiroshi MATSUBARA

Senior Division

Chair, Dept. of Interdisciplinary Cultural Studies
Chair, Dept. of Area Studies
Chair, Dept. of Social and International Relations
Chair, Dept. of Basic Science
Chair, Dept. of General Systems Studies
Chair, Dept. of Life and Cognitive Sciences

Atsushi MIURA
Ayako SAITO
Ryuzo UCHIDA
Yasuki ENDO
Michio KATO
Syoichi ISHIURA

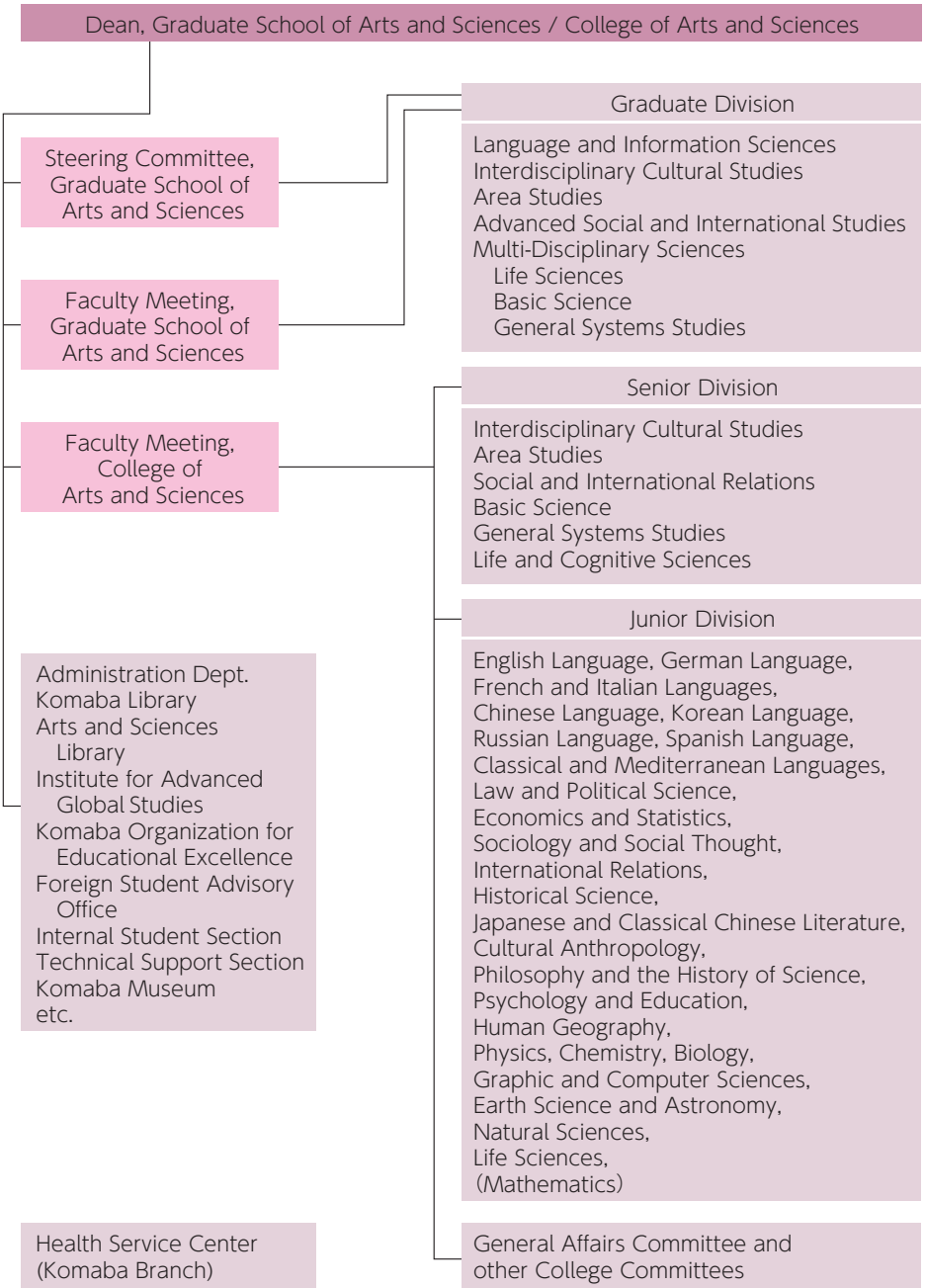
Director, Komaba Library
Director, Graduate School of Arts and Sciences Library
Director, Komaba Organization for Educational Excellence
Director, Institute for Advanced Global Studies
Director, Research Center for Complex Systems Biology
Director, Center for Evolutionary Cognitive Sciences
Director, East Asia Liberal Arts Initiative

Hideo KIMURA
Tetsuro KAJI
Susumu YAMAKAGE
Jun FURUYA
Kunihiko KANEKO
Toshikazu HASEGAWA
Yojiro ISHII

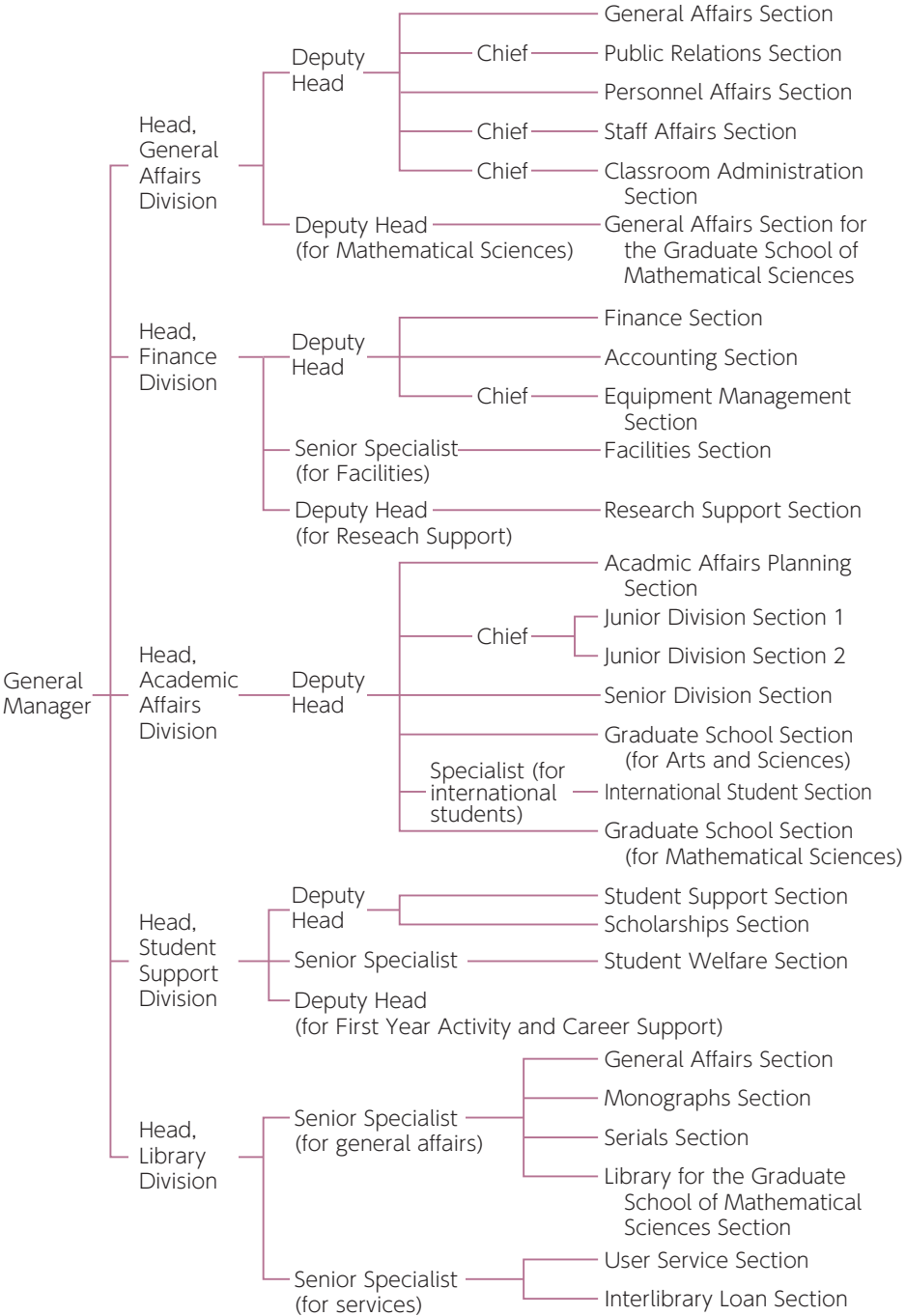
General Manager, Vice-Dean
Head, General Affairs Division
Head, Finance Division
Head, Academic Affairs Division
Head, Student Support Division
Head, Library Division

Takashi SEKIYA
Hisashi KIMURA
Katsuyuki ENDO
Tadashi YAMAGISHI
Tetsuji SATO
Riko MODEKI

ORGANIZATION



ADMINISTRATION OFFICES (Graduate School of Arts and Sciences/ Graduate School of Mathematical Sciences/College of Arts and Sciences)



TEACHING AND INSTRUCTION

Education at Komaba is provided at three different levels: the Junior Division, the Senior Division, and the Graduate School.

■ Junior Division

The College of Arts and Sciences consists of the Junior Division and the Senior Division. All undergraduate students of the University of Tokyo undertake their first two years of study (“Junior Division”) at the College of Arts and Sciences on the Komaba Campus. All students belong to one of six streams, Humanities and Social Sciences I through III and Natural Sciences I through III. The curriculum for each of these streams is directed mainly toward specialization in Senior Division undergraduate courses in the following Faculties.

Junior Division

Humanities and
Social Sciences I

Humanities and
Social Sciences II

Humanities and
Social Sciences III

Natural Sciences I

Natural Sciences II

Natural Sciences III

Senior Division

Faculty of Law

Faculty of Economics

Faculties of Letters and Education

Faculties of Engineering, Science, and
Pharmaceutical Sciences

Faculties of Agriculture, Science, Phar-
maceutical Sciences, and Medicine

Faculty of Medicine (School of Medi-
cine)

At the end of the third semester majors are decided according to each student’s preferences and academic performance, and departmental capacity. While most of the students move on to one of the above Faculties, most of which are located on the Hongo Campus, a number of students remain on the Komaba Campus to pursue Senior Division courses. The College’s Senior Division accepts students from any of the six streams in the Junior Division. In 2008 a new admission system started in which there is greater flexibility for students in choosing their departments for senior study.

The curriculum in the Junior Division consists of Foundation Courses, Integrative Courses, and Topical Courses. During their



Administration Office



Ginkgo Avenue



initial three semesters in the Junior Division, students study subjects included in these courses. In their fourth semester, students combine Junior Division courses and specialized courses, with appropriate shifts in emphasis prescribed by each Faculty or Department in the Senior Division. Courses included in the Junior Division curriculum are as follows:

Foundation Courses

Foreign Languages, Information Processing, Physical Education, Humanities, Social Sciences, Introductory Methodology, Mathematical Sciences, Material Sciences, Life Sciences, Human Sciences, Introductory Seminars, Introductory Experiments

Integrative Courses

Group A: Ideas and Arts

Group B: International and Area Studies

Group C: Society and Institutions

Group D: Man and Environment

Group E: Matter and Life

Group F: Mathematical and Information Sciences



Bldg.15

Topical Courses

Thematic Lectures, Specialized Seminars, courses including field work

● ALESS

In April 2008, ALESS (Active Learning of English for Science Students) started as a required course for science students in the core English programme. The aim of the course is to develop the skills necessary to write a short scientific paper and to make an academic presentation in English. Classes have a maximum of 15 students and are taught in English by teachers who are either native speakers of English or have native-level English language skills.

■ Senior Division (Specialized Education)

The Senior Division at Komaba was reorganized into six departments in the 1996-97 academic year. The primary goal of the

Senior Division is to foster in its students a broad understanding of the complex issues facing human society in the 21st century. It is organized on the assumption that in order to respond effectively to these diverse contemporary problems, students need to be able both to discern and to transcend existing systems of categorization. Constant attention to curriculum reform within the Senior Division therefore embodies an ongoing search for effective ways to combine a solid academic grounding with cutting-edge specialized education. As a small and highly selective educational unit, the Division is also able to make productive use of student input and creativity. Following on from the tradition established at the time of its original establishment as the Department of Liberal Arts and the Department of Basic Sciences, Komaba's Senior Division continues to produce widely respected graduates ready to contribute their creative intelligence and problem-solving skills to society. While a significant number choose to pursue graduate studies, many also enter fields such as the civil service, the corporate world, educational or research institutions, and the media.

The Senior Division consists of the following six departments and 22 majors:

● Department of Interdisciplinary Cultural Studies

Majors Cultural Anthropology; Culture and Representation; Japanese Intercultural Studies; Language and Information Sciences

● Department of Area Studies

Majors American Area Studies; British Area Studies; French Area Studies; German Area Studies; Russian and East European Area Studies; Asian Area Studies; Latin American Area Studies

Joint Courses European Area Studies; Eurasian Area Studies; Korean Area Studies

● Department of Social and International Relations

Majors Social Sciences; International Relations

● Department of Basic Science

Majors Mathematical Sciences; Materials Sciences; Molecular Sciences; Biofunctions; History and Philosophy of Science



Bldg.9

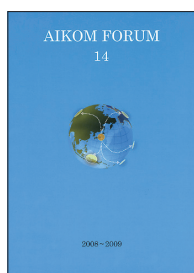


● Department of General Systems Studies

Majors Human Geography; Systems Sciences

● Department of Life and Cognitive Sciences

Majors Cognitive Behavioral Science; Basic Life Sciences



● SHORT-TERM STUDENT EXCHANGE PROGRAM (AIKOM)

The AIKOM (Abroad In Komaba) Program is a one-year undergraduate exchange program between the University of Tokyo and 28 partner universities in 19 countries. It is operated under a formal short-term exchange agreement which stipulates mutual tuition waiver (whereby participating students pay full tuition to their home university), and credit transfer (whereby credits earned during the study year abroad and which fulfill stated requirements are recognized by the students' home universities). Applications are solicited from students in the Senior Division of the College (excepting a few Departments) and students of the partner universities. The College now sends, and receives, more than 25 students each year.

A special curriculum is provided for AIKOM students at Komaba, which includes courses offered in English, such as Special Relay Lectures and Seminars on Japanese Studies, Dynamics of Japanese Cultural History, Aspects of Japanese Society, Specialized Courses on Japanese Studies, Japanese Language, and Directed Independent Study. All of these courses, except for the Japanese Language Courses and Directed Independent Study, are open to regular students in the Senior Division of the College. AIKOM students who have fulfilled requirements for the special curriculum are also free to take regular courses in the College's Senior Division according to their academic interests and Japanese language proficiency.

The partner universities are as follows:

Asia: Peking University, Nanjing University, and Fudan University (China), Gadjah Mada University (Indonesia), Seoul National University (South Korea), University of Malaya (Malaysia), University of the Philippines, Vietnam National University, Hanoi, National University of Singapore

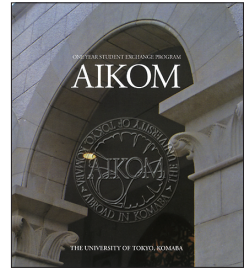
Oceania: Monash University, University of Melbourne, and University of Sydney (Australia), University of Auckland and University of

Otago (New Zealand)

North and South America: University of Michigan, Swarthmore College, and University of Washington (USA), University of Toronto (Canada), Pontifical Catholic University of Chile

Europe: Universités Associées de Grenoble, Universités Associées de Strasbourg, and Institut d'Etudes Politiques de Paris (France), Ludwig-Maximilians-University of Munich (Germany), University of Warwick (UK), University of Geneva (Switzerland), Università degli Studi di Roma "La Sapienza" (Italy), Uppsala University (Sweden)

Africa: Cairo University (Egypt)



■ Graduate School of Arts and Sciences

The Graduate School of Arts and Sciences was established with the primary objective of providing opportunities for students to develop in depth the knowledge acquired through their Senior Division years in the College of Arts and Sciences. Underscoring its interdisciplinary and international spirit, the Graduate School is committed to train not only scholars in specialized academic fields, but also professionals whose expertise will enable them to make a great social contribution in a variety of practical fields.

In the list of departments below, the name of a subject in parentheses indicates a shared inter-departmental chair.



Bldg.101



Administration Bldg.

● Language and Information Sciences

Foundations of Scientific Linguistics; Language and Information Analysis; International Communication; Textual Analysis; Theory of Language Acquisition; Japan and Korea Language Ecology

● Interdisciplinary Cultural Studies

Culture Dynamics; Culture and Representation; Cultural Anthropology; Cultural Complexity; Comparative Literature and Culture; (Comparative Ethnography)

● Area Studies

Multidimensional Analysis of World Structure; European and Russian Area Studies; Mediterranean and Islamic Area Studies; North, Central and South American Area Studies; Asia Pacific Area Studies; (Indian Ocean Area Studies; Pacific and American Area Studies)

● Advanced Social and International Studies

International Cooperation; International Relations; Public Policy; Interdisciplinary Studies in Social Sciences; (Comparative Politics)

● Multi-Disciplinary Sciences

Life Sciences

Biological Responses to Environmental Information; Bio-informatics; Biofunctionality; Exercise Adaptability; Cognitive and Behavioral Sciences (Informatics and Media Technology)

Basic Science

Foundations of Science and Technology; Structures in Natural Sciences; Theory in Complex Systems; Analysis of Material Functionality; Material Measurementation; Material Design

General Systems Studies

Systems Theory; Information Systems; Global Systems; Complex Systems Planning

● Programs

General Program of Human Security Studies; European Studies; Japanese–German International Joint Graduate School; Science Interpreter Training; International Philosophical Exchange on Co–Existence

■ Sponsored Programs and Projects

The following educational programs and research projects have been made possible by external benefactors:

Educational Programs / Benefactors

Establishment of prevention and treatment of mesothelioma / Nichias Corporation (April 2007–March 2012)

Regulation of cell and organ formation / Wako Pure Chemical Industries, Ltd. (April 2007–March 2011)

Yomiuri Shimbun International Journalism Studies (April 2008–March 2011)

Research Projects / Benefactors

Liberal Arts Development for Colleges and Schools / Benesse Corporation (April 2005–March 2010)



FACILITIES AND SERVICES

■ The Komaba College/Graduate Library

The Komaba College/Graduate Library (the Komaba Library) is the main library on the Komaba Campus, opened in a new building in October 2002. It is one of the three main educational libraries of the University of Tokyo. (The other two are the General Library on the Hongo Campus and the Kashiwa Library on the Kashiwa Campus.) The Komaba Library is a building with four stories above ground and two below, located at the eastern end of the Komaba Campus, facing the courtyard of the Komaba Communication Plaza. Well-lighted and spacious, the Komaba Library is used by students, teaching staff and researchers of the University of Tokyo.

Approximately 600,000 books, nearly half of the books on the Komaba Campus, are located in the library, and approximately 3,500 titles of periodicals are available. A variety of library resources, from humanities to sciences, from materials used for basic study to those used for more advanced research, are available.

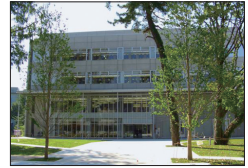
As an educational and research library, the Komaba Library is both supporting basic study of undergraduate students and providing many services for more advanced research.

The Komaba Library provides easy access to the Internet from inside the library. Textbooks for courses are located in the Syllabus Corner on the second floor, and are available anytime. Library tours and introductory training classes (as one component of the compulsory Introductory Seminars) are held for the first year students, giving them the opportunity to find out about and explore key resources for their study.

A variety of database training courses are offered to support more advanced research. Books and journals not located in Komaba Library may also be obtained through the intra/inter library loan service.

The Komaba Library holds many scholarly collections, including those of Eijiro Kawai (Kawai Bunko), Takamasa Mitani (Mitani Bunko), Tadao Yanaihara (Yanaihara Bunko), and Yoichi Maeda (Maeda Bunko). In addition, the library has a special collection from the former Dai-ichi Koto Gakko (Ichiko Bunko), which is now in the process of being digitalized and cataloged, and will be available on line in the near future.

The Komaba Library opens 8:40 to 22:00 on weekdays during



Komaba Library



User's Guide



Web site

semester, and 10:00-19:00 on Saturday, Sunday and holidays.

<http://lib.u-tokyo.ac.jp/>



Komaba Museum

■ The Komaba Museum

The building which used to be the Daiichi-Koto-Gakko Library was refurbished and reopened in 2003 as the Komaba Museum, consisting of the College Art Museum and the College Science Museum.

Both the College Science Museum and the College Art Museum are open from 10:00 to 18:00 on weekdays. Special exhibitions may have different opening hours.

<http://museum.c.u-tokyo.ac.jp/>



The College Art Museum

Founded on the initiative of the first Dean, Tadao Yanaihara, the Art Museum held its opening exhibition in 1951. The museum houses a variety of materials and items including archaeological materials from ancient China, Korea and Japan, archaeological and ethnographical artifacts of the Andes, replicas of Leonardo da Vinci's drawings, as well as works by modern Japanese painters such as Tsune Nakamura and Kunishiro Mitsutani (from the collection of the Dai-ichi Koto Gakko). Since the late 1970s, the collection has expanded to include contemporary art in the form of both art-works and slide documentation.

This new emphasis culminated in the acquisition, in 1980, of the Tokyo Version of Marcel Duchamp's monumental "The Large Glass" or "The Bride Stripped Bare by Her Bachelors, Even." This is the third and last authorized replica, realized faithfully according to Duchamp's instructions, and as such attracts international attention.

The museum is open to the public, and it attracts many visitors, especially on the occasions of temporary exhibitions. Noted scholars, artists, designers, writers and critics give lectures several times a year. From 1973 until 2003 the museum published an annual Art Museum News containing research reports and articles on exhibitions.

The museum is presenting three exhibitions during this academic year: "Collections of the Art Museum: Ancient Chinese Roof Tiles and Bronze Mirrors", "The 30th Anniversary of the Making of



The Tokyo Version of
"The Bride Stripped Bare
by Her Bachelors, Even"

The Large Glass (Japanese Version)” and “The Science and Technology of Vacuums”.

The College Science Museum

Established in 1953 to support general education in the College of Arts and Sciences, the museum, now located on the second floor of the Komaba Museum, is operated by the College Science Museum Committee, and, like the College Art Museum, is open to the public. The collection includes extensive samples of mineral ores, fungi, and butterflies and other insects. Also housed in the museum are filmed records of volcanic activity as well as a collection of old experimental apparatus, measuring instruments, and models for teaching, used during the earlier period of introducing Western science and engineering to Japan (from the collection of the Dai-ichi Koto Gakko). Major items on permanent display are a collection of apparatus for physico-chemical experiments.

The museum is presenting three exhibitions during this academic year: “Cover Illustrations of *Shuseibutsugaku Kenkyu* (official journal of the Society for the Study of Species Biology in Japan)”, “Collections of the Science Museum: Old Experimental Apparatus (from the collection of the Dai-ichi Koto Gakko)” and “The World of Renewable Energy”.

■ Institute for Advanced Global Studies

The Center for Pacific and American Studies (Bldg. 14)

The Center for Pacific and American Studies (CPAS) was inaugurated on April 1, 2000. Its predecessor, the Center for American Studies, was originally established in 1967 as the only institution at any Japanese national university devoted to collecting primary and secondary sources on the politics, economy, and culture of the United States in a systematic way in order to provide a basis for American Studies in Japan. The Center library has always been open to scholars and students of American Studies throughout Japan. The Center aims to promote the study of the Pacific region including North America, Australia and New Zealand, develop its collection of source materials, and improve accessibility.

As of April 2010, the Center possesses about 70,000 titles, including books, bound magazines, microfiche materials, audio-visu-



Center for Pacific and American Studies



al materials, 730 volumes of periodicals, and various other large collections on politics, economics, history, and culture.

The Center regularly sponsors lectures and seminars, inviting American and other international scholars. In response to increased public interest in Japan-U.S. relations and the Asia Pacific region, the Center sponsors an annual open symposium which attracts a large audience from both within and outside the campus.

The Center's annual publication, which was started in 1996 as *The University of Tokyo Journal of American Studies*, has now evolved into *Pacific and American Studies*, to which scholars outside the University also contribute articles. The Center has also published the *CPAS Newsletter* since 2001, and the publication of the Pacific and American Studies series was also initiated as the continuation of the existing American Studies series. The Center is linked on its web page to other institutes of Pacific and American Studies located in various regions of the Pacific Rim. A list of the Center's collections, the schedule of lectures and symposia, and details of a user's guide may be viewed on the home page.

<http://www.cpas.c.u-tokyo.ac.jp/>

Center for German and European Studies (DESK)



The original DESK (Deutschland- und Europastudien in Komaeba), established in 2000, was reorganized into the Center for German and European Studies in 2005. DESK became one of the Centers attached to the Institute for Advanced Global Studies in 2010. The Center is dedicated to fostering German and European studies at the University of Tokyo. The Center's purposes are to establish its own educational programs and to strengthen the academic links among relevant research projects at the international level. Two research projects, "EU and Global Governance" and "Historical Reconciliation in Europe", are in progress now. The Center manages two educational programs, the European Studies Program (ESP) and the Japanese-German International Joint Graduate School (IGK). The Center also engages in international collaboration with various partners, including the Martin Luther University Halle-Wittenberg in the IGK, the ASKO-Europe-Foundation and the University of Trier in the European Fall Academy, and the Center for German Studies of Peking University in a joint seminar on German Studies.

<http://www.desk.c.u-tokyo.ac.jp/>

Center for African Studies

This year is the fiftieth anniversary of “the year of Africa” (1960). Although African economies have been growing strongly in recent years due to the “resource bonanza”, the benefits of this development have not yet been well distributed. The purpose of the Center for African Studies is to research this “Africa at the crossroads” using a comprehensive approach including perspectives from the social and human sciences. The main topics are social transformation, economic dynamism, violent conflict, and state formation on the continent. The Center for African Studies promotes theoretical, political, historical, critical and discursive research based on the new paradigm of Human Security. The Center also supports field research at development sites and action research by business practitioners. The Center hosts international seminars and symposia and publishes the results of its research activities. In doing so, it strengthens the links between the university and society, including the business world.



Research Center for Sustainable Development

Sustainable development refers to the human effort to improve the quality of life over the generations without degrading the natural environment. It is one of the major concepts constituting the new paradigm of Human Security. The Research Center for Sustainable Development promotes research on development from theoretical, political, historical, critical, and discursive perspectives. Like the Center for African Studies, the Center for Sustainable Development supports field research at development sites and action research by business practitioners; in addition, the Center hosts international seminars and symposia, and publishes the results of its research activities, thus strengthening the links between the university and society, including the business world.



Research Center for Sustainable Peace

Sustainable peace refers to the human effort to establish a secure and long-lasting society in which each individual's dignity is respected as much as possible. Based on this perspective, and on the new paradigm of Human Security, the Research Center for Sustainable Peace promotes research on peace. Through theoretic-



cal and historical studies, critical study of peace ideas and policies, discourse analysis, field work in areas of armed conflict (and in areas in which there is a potential threat of conflict), as well as by empirical research and action research by peace workers, the Center aims at a re-definition of the concept of peace. The Center hosts international seminars and symposia and publishes the results of its research activities.



■ Komaba Organization for Educational Excellence (KOMEX)

The Komaba Organization for Educational Excellence (KOMEX) was established in April 2010 through the amalgamation of the Komaba Organization for Educational Development (KOMED) and the Center for Structuring Life Sciences (CSLS). Within KOMEX, different divisions are assigned to three main areas of activity (specified below) and work in collaboration to promote the systematic development and nationwide application of a new type of liberal arts education that is aimed at answering the needs of the new global age. The projects in progress include those for the structuring of knowledge based on the model already applied in the structuring of the life sciences, the development of new educational facilities exploiting the latest ICT technology, and the development of new educational methods aimed at fostering problem-solving and debating skills.

- Development of New Liberal Arts Education
 - ・ Division of Life Sciences
 - ・ Science and Technology Interpreter Training Division
 - ・ Division for Active Learning and Teaching
- Internationalization of Liberal Arts Education
 - ・ Internationalization Division
 - ・ ALESS (Active Learning of English for Science Students)
 - ・ Educational GP Division
- Formation of Networks
 - ・ High-School Liaison Division
 - ・ Division of Junior Scholars Collaboration Initiative
 - ・ Division for New Energy and Environmental Education

<http://www.komex.c.u-tokyo.ac.jp/>

■ Research Center for Complex Systems Biology

The project team of this Center has conducted research into fundamental aspects of life, based on the new understanding of life as a system. Since 1999, when the project “Analysis of Life Science as Complex Systems” was selected as a COE project, researchers from the fields of mathematical sciences, physics, chemistry, and biology have been working together to analyze the life system and have made considerable progress. An extended study of perception and cognition at higher levels was also conducted as part of the 21st Century COE project “Research Center for Integrated Science” (2002-2006).

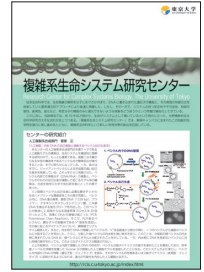
In recent years, in many parts of the world, an increasing number of integrated life studies have been conducted in collaboration with physics to develop new perspectives on the homeostasis, plasticity, and fluctuation of the life system. This worldwide trend helped this research project to achieve the status of a fully fledged institutionalized body through the establishment of the Center in 2005 as an international base for life science.

<http://rcis.c.u-tokyo.ac.jp/index.html/>

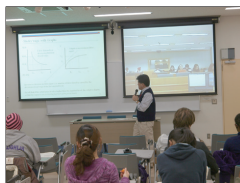
■ Center for Evolutionary Cognitive Sciences

The Center for Evolutionary Cognitive Sciences was established in 2008, with the purpose of further advancing the state of knowledge beyond the level that was gained through the multidisciplinary 21st Century Center of Excellence Program “Kokoro To Kotoba” (2003-2007). The center aims to offer contemporary answers to one of the most fundamental questions, “What are human beings?”, by interweaving knowledge from three broad disciplines: (1) evolutionary anthropology, behavioral genetics, and neuroscience; (2) cognitive science, developmental science, and information science; and (3) linguistic science. Research programs are organized around three axes: (1) cognitive developmental research that is being carried out in the Baby Lab; (2) systematic cognitive neuroscience research on children with autism; and (3) interdisciplinary cognitive neurolinguistic research resulting from collaborative efforts between linguistic scientists and cognitive scientists. The center also aims to promote collaborative research programs with other centers around the world.

<http://ecs.c.u-tokyo.ac.jp/>



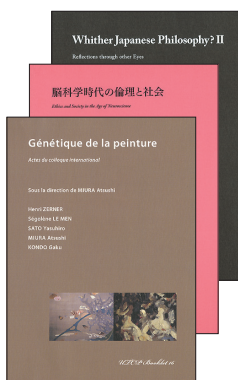
The first observation of visually-evoked event-related brain potentials (ERPs) obtained from a fully alert chimpanzee.



■ East Asia Liberal Arts Initiative (EALAI)

The East Asia Liberal Arts Initiative (EALAI) was launched in 2005 as an international educational program and became an official permanent organization within the College of Arts and Sciences in April 2009. One of the central roles of EALAI is to share liberal arts resources in East Asian universities so as to improve liberal arts education and thus promote the balanced development of undergraduate students. Based on discussions at BESETOHA (Beijing, Seoul, Tokyo, Hanoi), the forum for sharing the latest academic and educational achievements, which, since 1999, the University of Tokyo has been organizing in collaboration with Beijing University, Seoul National University, and the Vietnam National University, Hanoi, the activity of the organization focuses on: 1) maintaining the work of BESETOHA, 2) presenting some new liberal arts disciplines to East Asia, and 3) adopting others from East Asia. The steering group is currently engaged in running BESETOHA, organizing intensive lecture sessions at Nanjing University, and organizing a series of thematic lectures on the possibility of establishing shared ground for liberal arts education in East Asia. Since 2008, EALAI has also been conducting a joint e-lecture series on Asian cultures and economies with Seoul National University and the Vietnam National University, Hanoi.

<http://www.ealai.c.u-tokyo.ac.jp/>



■ University of Tokyo Center for Philosophy (UTCP)

The University of Tokyo Center for Philosophy (UTCP) is an institute for international collaborative work in philosophy. It began its activity in fall 2002 as a Center for International Philosophical Exchange on Co-Existence, under the aegis of the 21st Century COE (Centers of Excellence) program, funded by the Japanese Ministry of Education, Culture, Sports and Technology. Working as an Independent Global COE Program since fall 2007, UTCP pursues philosophical research whose aim is to cultivate a future for humanity based on the fundamental idea of co-existence, through the two following projects. (1) The center will enhance international academic exchange within the trilateral framework of Asia—North America—Europe, which was established during its previous phase (2002-2007), and expand this exchange to include

the Islamic sphere. We aim to foster a network of joint research initiatives in philosophy in an attempt to redefine human existence in this unprecedented age of globalization. (2) The center will provide advanced educational opportunities for young scholars to develop their comprehensive and holistic understanding of the world, and to apply that understanding in specific practical situations. The center publishes—both domestically and internationally, and in multiple languages—the results of our research and educational projects concerning the philosophical possibility of co-existence in the 21st century.

<http://utcp.c.u-tokyo.jp/>

■ Student Counseling Center (Bldg. 1)

The Center provides guidance and counseling to help students cope with problems of a personal nature. The Center is open to both undergraduate and graduate students, and the kinds of problems they bring are very varied. Some are concerned about selecting their major, others about interpersonal relationships, various aspects of mental health, financial difficulties, or coping with harassment by cults or political propagandists. Students also come to the Center for psychological testing and access to information and guidance about the selection of courses and classes, issues related to repeating a year, leave of absence from the university, and other matters of various kinds. The Center receives inquiries not only from the students concerned, but also from their family and friends.

There are some cases where a solution to a problem might be found in one session and other cases where improvements are achieved through continuous counseling. The Center provides students with opportunities to look deeply into their “truest selves” through group counseling and also to examine their study plans through discussion with postgraduate teaching assistants. Depending upon the nature of the problem, assistance may also be sought from the Department of Mental Health at the Health Service Center, the Academic Guidance Center, the Foreign Student Advisory Office, Academic Affairs Section and the Student Affairs Section of the Administration Department, the Harassment Help Room, and the Student Counseling Centers on the Hongo and Kashiwa Campuses.

<http://ksccl.c.u-tokyo.ac.jp/>





Academic Guidance Center News



■ Academic Guidance Center (Bldg. 1)

The Center offers guidance, counseling, and information to students in making decisions concerning their majors when they proceed from the Junior to the Senior Division. Such guidance is needed because of the “late specialization” policy of the University, and the stiff competition that exists for places in some of the more popular Faculties and Departments.

Students who seek guidance can receive detailed information in the Center’s information room or through its web site about teaching and research conducted at various Faculties and College and Graduate Schools, and on where they stand relative to other students in academic performance. Also with the publication of the *Academic Guidance Center News*, which introduces various Faculties/Departments and provides the latest information, the Center serves as a vital information hub for students in the Junior Division. Information in particular demand is stored in a database for easy computer reference. The Center is crowded with students particularly at the beginning of the semester, when transcripts come out, and when the due date for registering their choice of major is near. Many students also visit the Center for personal guidance on their academic career.

The Center sponsors symposia every year with speakers invited from all the Faculties on the other campuses as well as the College of Arts and Sciences. In April 2010, ten speakers gave various illuminating lectures on the theme “How I Chose My Specialized Field of Study.” The lectures were followed by lively discussions between the speakers and students, providing a valuable opportunity for participating students to think in detail about their academic future.

<http://park.itc.u-tokyo.ac.jp/agc/>

■ Komaba International Office

The support system for foreign students, who make an invaluable contribution to the diversity of perspectives that is essential to liberal arts education and international studies at Komaba, began with a consultation service by special advisors on various problems faced by such students. Currently the service is provided at the International Student Section and the International Ex-

change Lounge on the first floor of the Administration Office as well as at the Foreign Student Advisory Office on the third floor (Room 301B) of Building 14. Komaba International Office is also used for individual studies, tutoring, and the exchange of a wide range of information.

Administrative staff provide assistance with paperwork, housing, scholarships, visa matters, and various social events relevant to international students. In support of instructional activities, the International Office makes available a variety of equipment, newspapers, journals, and reference books, while providing supplementary classes in Japanese conversation, writing, and other subjects to help students develop skills necessary for their studies.

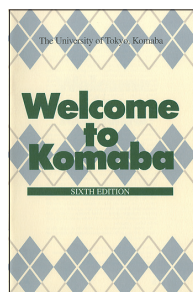
A full-time member of faculty is always available to offer friendly advisory assistance concerning adjustment to life in Japan and on campus, financial problems, etc. The Foreign Student Advisory Office gives biannual orientation programs, in April and October, where a brochure for international students, *Welcome to Komaba*, is distributed. Various projects to promote exchange among foreign students and also between foreign and Japanese students are scheduled, too.

The Office of the International Student Section is open on weekdays from 9.00 a.m. to 4.30 p.m., the International Exchange Lounge is open on weekdays from 10:00 to 17:00, and the Foreign Student Advisory Office is open on weekdays from 10:30 to 17:00.

■ Information Education Complex (East Bldg. and West Bldg.)

The two buildings of the Information Education Complex house large-scale computer facilities which provide an extensive support system for the required Information courses in the Junior Division, and for Senior Division courses, not only for Komaba students but also for those from other Faculties. It also supports the educational and research needs of the graduate school and of staff members.

At the end of the academic year 2007 the computing equipment was renewed. Terminals equipping these rooms are available for students to use to write papers, to access the Web, to use e-mail and other Internet facilities, and to study subjects related to information science.



Information Education Complex (East Bldg.)



Information Education Complex (West Bldg.)



Report of the Technical Support Section

The computer system in the two buildings is managed by the university-wide Information Technology Center. All undergraduate and graduate students are given an account upon request, and all first-year students automatically receive an account upon entering the College for use in Information classes and for other purposes. They may apply to extend their use of the account beyond the designated year.

<http://www.ecc.u-tokyo.ac.jp/>

■ Technical Support Section (Bldg.16)

In July 1996, the College integrated all members of the technical staff, who had been located at different posts on campus, into the Technical Support Section. Providing essential backstage support for the educational and research activities of the College, the roles of the technical officials include:

- 1) maintenance and management of experimental apparatus, assistance in teaching laboratory courses, and curriculum development in physics and chemistry in the Junior Division;
- 2) maintenance and management of experimental apparatus, assistance in teaching laboratory courses, and curriculum development in the Department of Basic Science, the Department of General Systems Studies, and the Department of Life and Cognitive Science in the Senior Division;
- 3) maintenance and management of audio-visual equipment and teaching materials;
- 4) management of the College Art Museum, research into related materials, and publication of the Museum's annual research report, *Art Museum News*;
- 5) machining and glass crafting of laboratory instruments and parts, and teaching students as well as faculty and administrative staff how to operate the machines;
- 6) maintenance and management of facilities for liquefying, supplying and recovering liquid helium and other low temperature cryogens, and development of peripheral low temperature instruments;
- 7) safety management and operation of the Radio Isotopes (RI) Control Area;
- 8) management of laboratory waste materials, waste materials from medical research, and high-pressure gas containers, man-

agement of laboratory recycling facilities, and safety management of hazardous materials;

- 9) the production and editing of videos for Academic Guidance Center symposia, and for seminars given for staff who handle radioactive materials, or who use P2 laboratories ;
- 10) management of the storage facilities within the Graduate Department of Multi-Disciplinary Sciences (computerized barcode management since 2001).

Since December 1996, the Technical Support Section has held an annual workshop, presenting research results and many ingenious new ideas, and published reports of such presentations.

■ Advanced Research Laboratory

The Advanced Research Laboratory is a four-storey building built in the summer of 2002 in order to provide space and facilities at Komaba for advanced research projects in science and technology. The laboratory is run by a steering committee organized by the Department of Basic Science. A principal researcher supported by competitive external funding can apply to the committee for a research space. As of 2010, more than ten projects are running, including that of the Research Center for Complex Systems Biology.



■ Komaba Faculty House

Komaba Faculty House, designed to serve as a facility for international academic exchange, was completed in March, 2004. It stands on the site of the former Dai-ichi Koto Gakko Alumni House and consists of two parts: a renovation of the Western-style wing of the old building — now a restaurant (*Lever son verre*) and the Faculty Club (*Kanran*) — and a new extension to replace the former Japanese-style wing; this extension contains seminar rooms and accommodations for short-stay foreign visitors. It has been a long-cherished dream to have this kind of facility, and the Faculty House, which now stands peacefully surrounded by woods, is the beautiful realization of this dream. The management of this facility is now undertaken by the Komaba Faculty House Management Committee.





■ Day Care Center

The Komaba Day Care Center has been providing day care services for children of the university staff and students as well as of the neighboring community for nearly 40 years since its establishment in 1971. The Day Care Center is located south of the tennis court reserved for university staff. In 2004, it moved from its old site near the back gate into a new, earthquake-proof building. The new Day Care Center is recognized as an important facility supporting equal employment opportunities. It is run by an NPO, and was successfully granted a Type-A certification by the Metropolitan government in 2004. The Day Care Center accepts children from the age of 0 to 5. The children take walks all over the Komaba campus and grow up to be very active boys and girls enjoying the rich green campus environment.



■ Health Promotion Division, Health Service Center, Komaba Branch

The aim of the Health Service Center is to promote the health of both students and staff at the University of Tokyo. The Center has two sections: the Health Service Section and the Clinical Service Section.

The Health Service Section provides health check-ups for students and staff and also offers advice on maintaining health, preventing infectious diseases, avoiding metabolic syndrome, and other matters of medical concern.

The Clinical Service Section, which is open to all students and staff, is comprised of departments of internal medicine, psychiatry, dentistry, orthopedics and dermatology, of which the department of internal medicine provides a primary care treatment service. Patients can be referred, if necessary, to other more appropriate hospitals or clinics where treatment is covered by health insurance. The clinic also issues medical certificates through the department of internal medicine. In addition, the Center provides a massage service in the Health Care Room.

<http://www.hc.u-tokyo.ac.jp/>

■ Harassment Counseling Center, Komaba Branch (Bldg. 101, 1st Floor)

The University of Tokyo has established an official network for sexual harassment prevention and for addressing harassment complaints. The first Harassment Counseling Center opened in the Yasuda Auditorium on Hongo campus in March, 2001, and the Komaba Branch started operation in October of the same year. The Harassment Counseling Center, which is open to faculty, staff and students, deals with sexual-harassment-related problems. It also provides consultations for faculty or staff in cases involving academic harassment.

Professionally trained counselors, both male and female, are available for consultation and to provide support and help in finding the best way to resolve problems or concerns. When a relief action is requested by a client, the Harassment Counseling Center will help the client to convey his or her grievance to the Harassment Prevention Committee. Scrupulous care is taken to maintain confidentiality and to protect the privacy of clients. The Harassment Counseling Center does not disclose private or other personal information of our clients to any third parties without the client's consent.

The Komaba Branch is open on Mondays, Wednesdays, and Fridays at present. The Hongo, Komaba, and Kashiwa Harassment Counseling Centers all provide consultations either in person at the centers or by telephone (03-5454-6159), FAX (03-5465-8854) or e-mail (soudan@har.u-tokyo.ac.jp).

http://www.u-tokyo.ac.jp/per01/d06_02_01_01_j.html

■ Disability Services Office, Komaba Branch (Bldg. 8)

The Komaba branch of the Disability Services Office is located in Room 111 in Building 8 beside the Ginkgo Avenue on Komaba I Campus.

The branch, in collaboration with its Hongo counterpart, has accumulated enough data and expertise to enable all disabled students and staff at the university to pursue their study, research, teaching, and other work. By providing seminars and training sessions for supporters, and in many other ways, the office plays a leading role in facilitating the support activities implemented by



the individual faculties and departments. It also aims to raise the awareness of disability support issues.

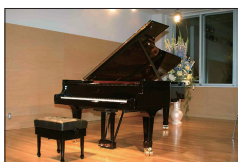
There are always four staff members available during office hours to serve the needs of the university community and to function as an interface between disabled students or staff and the rest of the university. The office welcomes anyone who needs or is interested in disability support. The office is open on weekdays from 9:30 to 17:00.

<http://ds.adm.u-tokyo.ac.jp/>



■ Komaba Communication Plaza

The Komaba Communication Plaza consists of three buildings which house stores, restaurants, and facilities for academic or extracurricular activities. The CO-OP bookstore and general store are situated on the first floor of the North Building while general classrooms and practice rooms for music, performing arts, and sports are located on the second and third floors. These rooms are used not only for classes and extracurricular activities but also for wider purposes such as lectures or piano concerts. The South Building consists of CO-OP restaurants, a lounge for the teachers and staff of the university, and a Media Gallery, which is a display space for works of art. The third building, named the Wa-kan, has six Japanese-style rooms suitable for small meetings, flower arrangement, tea ceremony, small parties or overnight stays.



■ Multi-Purpose Hall

This hall, inaugurated in July 1998, is designed to allow for multiple uses, including both events related to educational, research and cultural activities at Komaba, and a wide range of theatrical activities. It consists of a versatile space of approximately 16 meters square surrounded by black walls, where a stage and seating may be set up as the occasion may require. Fully airconditioned, the hall interior is professionally equipped and has a control room with an advanced lighting control panel, which makes it possible to stage professional-level public performances.

Apart from several public events held for educational or research purposes every year, the hall is widely used by Komaba's student groups involved in cultural activities. In particular, the the-



atrical performances given for many years in the past by students in the North Hall of the former Komaba Dormitory Cafeteria, affectionately known as the “Komaba Little Theater,” now take place in the Multi-Purpose Hall. The hall is managed through a process of mutual consultation (addressing both administrative and maintenance issues) between the faculty and the student groups involved.

■ Hakuinsha Pavilion

A structure designed for practicing various forms of traditional Japanese culture, the Hakuinsha Pavilion was newly opened in June 1996. The Pavilion is a house in the traditional style, with two Japanese-style rooms of 10 tatami mats, which are bordered by a wide L-shaped corridor, an entrance hall, a washing place, and a closet. The reception room in the back, with an alcove and a sunken square hearth, may be used as a tea ceremony room. The room in the front has a variety of uses. Following a suggestion from students, the room has been designed so that it may be turned into a rehearsal stage for traditional performing arts when the mats are put away. The Pavilion utilizes the finest woods from the University Forest (Faculty of Agriculture).



■ First-Year Activity Center

The First-Year Activity Center, opened in October 2008, is the Komaba hub for first year activities, which are general educational programs for improving the social and educational experiences of first-year students. In this center, several programs, including student consultations with peer advisers, lectures on first-year activities, lunch meetings of teachers and students and mental health consultations, have been conducted. Various support programs for students are also scheduled.



■ KALS (Komaba Active Learning Studio) (Bldg. 17)

In line with the University of Tokyo’s ideal of liberal education, the Komaba Active Learning Studio, or KALS, was created as a model classroom. Equipped with state-of-the-art information technology, KALS offers classes tailored to many types of active learn-



ing, including discussions, group work, and presentations.

The KALS facility and IT devices are specially designed to reflect each student's contribution immediately. Reaching beyond departmental boundaries, the College of Arts and Sciences, the Interfaculty Initiative in Information Studies, and the Center for Research and Development of Higher Education have worked together to develop teaching methods that best utilize the KALS learning environment.

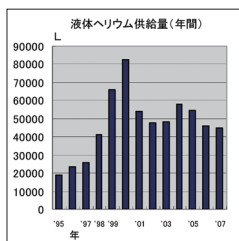
<http://www.kals.c.u-tokyo.ac.jp/>



■ The Science Library (Bldg. 16)

The Science Library acquires materials that serve the general reference and research needs of faculty, graduate students, and research students in Multi-Disciplinary Sciences, as well as undergraduate students in the natural sciences of the Senior Division. The titles cover physics, chemistry, biology, earth sciences, astronomy, mathematics, and related disciplines. In addition to approximately 50,000 books, the library receives about 1,100 periodicals from Japan and overseas, including university bulletins. It also holds an important collection of periodicals from the 19th century and the early years of the 20th century, such as the *Berichte der Deutschen Chemischen Gesellschaft*, which began publication in 1868.

<http://lib.c.u-tokyo.ac.jp/scilib/index.html/>



The supply volume of liquid helium at the college

■ Cryogenics Center, Komaba Branch (Bldg.16)

Established in 1965, the Center supplies liquid nitrogen (supply) and helium (supply and recovery) for educational and research uses at both graduate and undergraduate levels.

The Center currently supplies approximately 150,000 liters of liquid nitrogen annually to 60 research laboratories, comprising two thirds of all research units within the Multi-Disciplinary Sciences (Graduate School of Arts and Sciences), as well as to undergraduate student laboratory courses in the Junior and Senior Divisions, and to the Health Service Center (Komaba Branch). In addition, the Center supplies research units in Buildings 3, 15 and 16 as well as in the Advanced Research Laboratory with more than 50,000m³ nitrogen gas vaporized from the liquid nitrogen tank

(99.9999% purity, supplied via pipelines at 0.4 MPa pressure). Liquid helium is supplied to ultra low temperature experimental facilities in various laboratories, and to the latest models of experimental equipment, such as the high-resolution NMR and the SQUID magnetometer. The supply also goes to super low temperature experimental facilities used by Senior Division students of the College.

The Center continues to supply liquid nitrogen and helium 24 hours a day, every day of the year, and this round-the-clock effort has increased the rate of supply of Helium so that it now amounts to more than 50,000 liters per year.

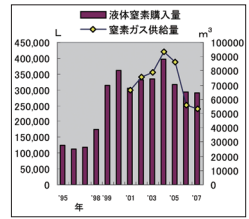
■ RI (Radioisotope) Laboratory (Bldg.15)

The RI Laboratory was moved from Building 3 to the basement of Building 15 in 1989. This laboratory undertakes the maintenance of radioisotopes and relevant apparatus for measurement.

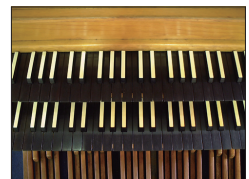
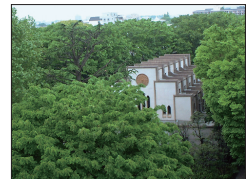
Its main users are researchers from the biology-, life-science-, and physical-science-related departments who use unsealed radioisotopes, and those from physics- and chemistry-related departments who use sealed radioisotopes. The members of the managing staff have meetings on a regular basis in order to improve management and operation. The laboratory also undertakes the management of commonly used apparatus including a bio-imaging analyzer and a multi-purpose scintillation counter.

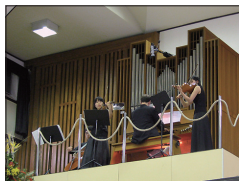
■ The Organ (Auditorium)

The organ in the Auditorium was donated by the late Mr. Tai-kichiro Mori and was installed in 1977. Though a relatively small model with 12 stops, its tremolo and couplers contribute to the varicolored tonal quality of the instrument, which makes it suitable for the modern virtuoso repertoire as well as for baroque music. The organ is administered by the Organ Committee of the College. Since the inaugural concert in May 1977, 118 concerts have been held, featuring both established artists and emerging young organists from Japan and overseas. These concerts, free of charge, have attracted a large audience from outside as well as within the campus. Since 1998 organ classes, taught by profes-



The purchase and supply volume of liquid nitrogen at the college





sional organists, have been given for the College's students and staff members, who thus get an opportunity to deepen their understanding of the instrument. Detailed information about concert schedules and classes is available through the Newsletter of the College of Arts and Sciences, the University Bulletin, and the Organ Committee's home page.

<http://organ.c.u-tokyo.ac.jp/>



■ Mitaka International Hall of Residence

This residence was established in Shinkawa, Mitaka City, outside the Tokyo metropolitan area, to house Komaba students. Applications by international students are accepted from all the campuses of the University. With the ratio between Japanese and international students set at 7:3, a day-to-day exchange of ideas and friendship is promoted. There are currently six residential buildings and a common building with a multi-purpose hall. Each of the 605 single rooms, equipped with basic furniture, kitchenette, shower and toilet, and air-conditioner, provides a comfortable living space at a minimum rent. Approximately 25 percent of the residents are women, who are housed on separate floors from male students. There are also regular occasions for exchange between the students and local residents.



EDUCATIONAL AND RESEARCH PROGRAMS

■ Graduate Program on Human Security (HSP)

Human Security is a new concept focusing our attention on the development of a more humane global society for the 21st century. To nurture “human assets” who will make innovative contributions in this area, the Graduate Program on Human Security (HSP) was launched in April 2004. The HSP offers Master's and Doctoral courses based on close coordination among the five departments in the Graduate School of Arts and Sciences. Each year around 16 students for the Master's course and 4 students for the Doctoral course are accepted. These students receive M.A. and Ph.D. degrees in Human Security Studies when they complete the program.

<http://hsp.c.u-tokyo.ac.jp/eng/>



■ European Studies Program (ESP)

The European Studies Program (ESP) is a master's-level program whose aim is to cultivate specialists in European Studies. In the program, students acquire the basic knowledge and methodologies of European studies through its core courses, including the Methodologies of European Studies and Supervised Readings. Field research is highly recommended and the Center for German and European Studies gives top priority to ESP students for its field research stipend. ESP students obtain an MA in European Studies by submitting a thesis on a relevant topic and successfully completing the curriculum. After graduation, the students are expected to be instrumental in acting as a bridge between Europe and Japan.

<http://www.desk.c.u-tokyo.ac.jp/j/esp.html/>



■ Japanese-German International Joint Graduate School (IGK)

The IGK is a program which promotes joint research and education by the University of Tokyo in Japan and the University of Halle in Germany, and which allows students in the program to receive a doctor's degree from whichever of the two universities they are enrolled in. This program, which is the only joint graduate school of liberal arts in Japan, was started in September 2007



with the support of the Japan Society for the Promotion of Science and the Deutsche Forschungsgemeinschaft (German Research Foundation). Every year we send about six graduate students for long-term stays, and several professors for short-term stays, to Halle while at the same time accepting an equivalent number of German graduate students and professors. Furthermore, during the semester we hold joint classes, and also conduct joint seminars, given in Halle and Komaba in spring and autumn, in order to foster knowledge of scientific research in the two countries among young researchers. In addition, we conduct an international joint research project concerning changing modes of civil society from a German-Japanese comparative perspective.

<http://igk.c.u-tokyo.ac.jp/>



■ Science Interpreter Training Program

The Program was launched in 2005 with the aim of nurturing leading figures who can form a bridge between science/technology and society. It focuses not only on “how to communicate,” but also on “what to communicate.” This is a university-wide minor program for graduate students with various majors in both the sciences and the humanities. The curriculum enables participants to acquire varied and critical ways of thinking, to broaden their horizons and to master the skill of writing/presenting/interviewing, by cooperating with distinguished instructors both on- and off-campus. The graduates of this program are working actively in a wide range of fields, including research and development, science and technology policy, education, and journalism. Since April 2010, the program has become an important part of the Komaba Organization for Educational Excellence (KOMEX). It continues to offer a graduate-level program but plans to extend the program to third- and fourth-year undergraduate students in the near future.

<http://science-interpreter.c.u-tokyo.ac.jp/>

■ Liberal Arts Program, University of Tokyo (Nanjing) (LAP)

The Tokyo University Liberal Arts Program (Nanjing), abbreviated to LAP, delivers, primarily to Chinese universities, the new

kind of liberal arts education which is conducted at Komaba and which combines the humanities and sciences. Nanjing University is the main partner university and for five years we have sent about ten professors in March of every year to conduct intensive seminars and lectures. Since 2010, we have started a new kind of student exchange, sending students of our university to China and having both Japanese and Chinese students take the same lectures and engage in discussion. It is the mission of LAP to pursue the possibilities of a new kind of liberal arts education in East Asia by transmitting directly our university's lectures to China and through academic exchanges between Japanese and Chinese universities.



REGULAR PUBLICATIONS

LANGUAGE, INFORMATION, TEXT

Gengo Joho Tekusuto, edited by the Graduate Department of Language and Information Sciences; 1st volume in 1994 (latest volume: Vol. 16, October 2009); published yearly; a collection of papers by faculty of the Department; includes research on the linguistic component of human culture and society and on language itself.



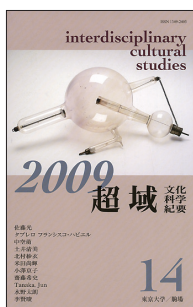
LANGUAGE AND INFORMATION SCIENCES

Gengo Joho Kagaku, edited by the Graduate Department of Language and Information Sciences; 1st volume in 2003 (latest volume: Vol. 8, March 2010); published yearly; a collection of papers by students of the Department; succeeds the previous *Studies in Language and Information Sciences* (*Gengo Joho Kagaku Kenkyu*), the bulletin of the Research Association of the students of the Department. Selection depends on impartial review by the teaching staff of the Department, and other editorial functions are the shared responsibility of faculty and students.



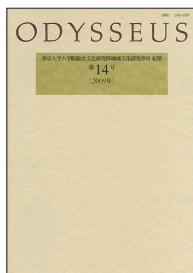
INTERDISCIPLINARY CULTURAL STUDIES

Edited by the Department of Interdisciplinary Cultural Studies, Graduate School of Arts and Sciences. Founded in 1996 (the latest volume / Vol. 14, November 2009); issued annually. This is a collection of academic essays written by the staff and graduate students of the Department of Interdisciplinary Cultural Studies. It provides an opportunity for people of the three programs, Comparative Literature and Culture, Culture and Representation, and Cultural Anthropology, to publish academic essays on various cultural and social phenomena. The essays are carefully screened by the academic staff before being published.



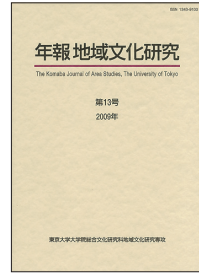
ODYSSEUS: THE PROCEEDINGS OF THE GRADUATE DEPARTMENT OF AREA STUDIES

Sogo-bunka-kenkyu-ka Chiiki-bunka-kenkyu Kiyo, edited by the Graduate Department of Area Studies; 1st volume in March 1997 (latest volume: Vol. 14, March 2010); published yearly; a collection of papers by faculty of the Department. Emulating the spirit of the ancient hero who traversed the wide Mediterranean world, ODYSSEUS collects recent work on the contemporary transformation of the traditional cultures of all the world's regions.



THE KOMABA JOURNAL OF AREA STUDIES

Nenpo Chiiki Bunka Kenkyu, edited by the Graduate Department of Area Studies; 1st volume in 1997 (latest volume: Vol. 13, March 2010); published yearly; a collection of papers by the students of the Department. Selection depends on impartial faculty review. Other editorial functions are the responsibility of a combined team of faculty and students.



ADVANCED SOCIAL AND INTERNATIONAL STUDIES

Kokusai Shakai Kagaku, edited by the Graduate Department of Advanced Social and International Studies; 1st volume in 1951 (latest volume: Vol. 58, March 2009); published yearly; a collection of articles by the teaching staff of the Department; includes annual reports of the Graduate Department and the undergraduate Department of Social and International Relations, providing updated information on activities and topics in the graduate and undergraduate departments.



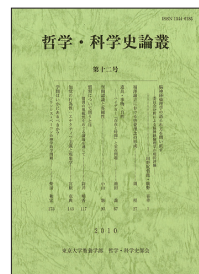
FRONTIÈRE

Sogo-bunka-kenkyu-ka Koiki-kagaku-senko Nenpo, edited by the Graduate Department of Multi-Disciplinary Sciences; 1st volume in 1995 (latest volume: March 2010); published yearly; including articles introducing research and educational activities within the Department, papers analyzing current topics, and a list of publications for the year by members of the Department including faculty.



THE ARCHIVE FOR PHILOSOPHY AND THE HISTORY OF SCIENCE

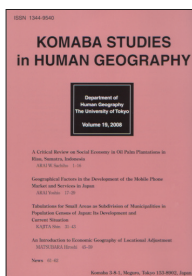
Tetsugaku Kagaku-shi Ronso, edited by The Archive for Philosophy and the History of Science Editorial Committee; founded in 1999 (latest volume: Vol. 12, January 2010); published yearly; a collection of papers written by the teaching staff of the Section of Philosophy and the History of Science, as well as graduate students under their supervision. Student papers are accepted for publication after they have been examined and approved by the faculty of the Section. Other editorial functions are the responsibility of the committee selected from the faculty of the Section.





THE PROCEEDINGS OF THE FOREIGN LANGUAGE SECTIONS

Gaikokugo Kenkyu Kiyo, edited by the Foreign Language Committee; renamed in 1996 (formerly the Proceedings of the Department of Foreign Languages and Literatures, *Gaikokugo-ka Kenkyu Kiyo*, 1951-1995); latest volume: Vol. 14, March 2010; annual publication; a collection of papers representing the Foreign Language Sections; mainly articles on language, literature, and foreign language education; editorship of each number resting with the Sections of English, German, French/Italian, Chinese, Korean, Russian, Spanish, and Classical Languages.



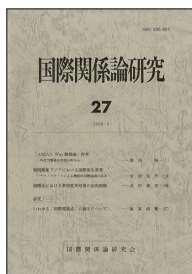
KOMABA STUDIES IN HUMAN GEOGRAPHY

Tokyo Daigaku Jinbun-chirigaku Kenkyu, edited by the Department of Human Geography; 1st volume in 1965 (latest volume: Vol. 19, May 2009); published yearly; a collection of papers by the teaching staff and graduate students of the department and their co-researchers from inside and outside Japan; includes updated information on activities and topics in the department.



THE BULLETIN OF THE KOMABA STUDENT COUNSELING CENTER

Komaba Gakuseisoudanjo Kiyo, edited by Komaba Student Counseling Center; 1st volume in 1991 (latest volume: Vol.14, June 2010); published yearly: annual activity report of student counseling at Komaba campus, and papers by the counselors. It contains discussions of student needs, and special procedure and system of support at Komaba campus.



STUDIES ON INTERNATIONAL RELATIONS

Kokusai-kankei-ron Kenkyu, edited by the Association of International Relations; 1st issue in 1966 (latest issue: No. 27, March 2008); published twice a year; a collection of articles by the members of the Association of International Relations. Selection depends on impartial review by two anonymous referees. Other editorial functions are the responsibility of the Editorial Committee selected mainly from the teaching staff and the alumni of the Graduate Department of Advanced Social and International Studies.

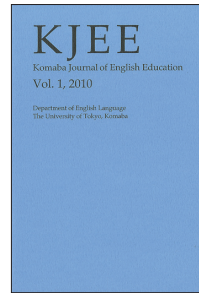
THE THESIS COLLECTION OF THE SCIENCE INTERPRETER TRAINING PROGRAM

Published yearly; 1st volume in 2008 (the latest volume in March 2010). This is a collection of theses by graduate students who have taken the Science Interpreter Training Program as their minor. All students in the program carry out research under the supervision of faculty members on themes related to the interpretation and communication of science. The theses address a wide range of research topics, including—among others—the ways in which scientific evidence is used in judicial courts, the nature of probability, the limitations of simulation, and the motivation of authors and publishers who produce science books for the general public.



KOMABA JOURNAL OF ENGLISH EDUCATION (KJEE)

Edited by the Department of English Language, College of Arts and Sciences; 1st volume in 2010 (latest volume: Vol. 1, March 2010); published yearly. This journal publishes papers in English on university-level English education by the teaching staff of the Department of English Language in the College of Arts and Sciences. It also includes the final papers of University of Tokyo English Education Program students; these papers are refereed by committee members of the English Education Program.



KYOYO GAKUBU HO (The Newsletter of the College of Arts and Sciences)

Edited by the Gakubu-ho Committee; 1st issue in 1951 (latest issue: No. 531, January 7, 2010); published 9 times a year. Created by the first Dean, Tadao Yanaiharu soon after the founding of the College, to improve communication between staff and students, and to contribute to the general cultural environment of the campus. It thus includes public announcements and messages on college policies. Other articles are contributed by faculty members, dealing with their academic activities, the latest developments in their research fields, academic exhibitions on College Campus, or subjects of a less academic nature in the form of book reviews or essays. The Newsletter also includes introductory information about the Faculties on the Hongo campus, as well as the College's Senior Division, in order to help students make decisions on their majors.





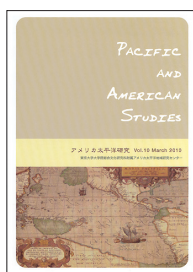
KOMABA 20XX (The Annual Report on Staff Achievements)

Edited by the Public Relations Committee; 1st volume in 1991; 1 volume a year. Since 1991, the College of Arts and Sciences has been publishing a yearly report providing information on College policy, academic activities, staff achievements, and research interests. The comprehensive version, which includes brief resumes of all members of the teaching staff, and the supplementary version, which focuses on official activities on campus, are published in alternate years.

■ Institute for Advanced Global Studies

PACIFIC AND AMERICAN STUDIES

Amerika Taiheiyō Kenkyū, edited by the *Pacific and American Studies* Editorial Committee; founded in 2001 (latest volume: Vol. 10, March 2010); published annually; includes featured articles, papers, and book reviews, related to the politics, economies, society, and cultures of the Pacific and American regions, and reports of symposia and other research activities associated with the Center for Pacific and American Studies, contributed by American Studies scholars from both within and outside the University. The journal also carries a select number of unsolicited articles.



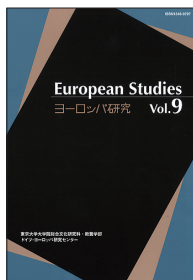
CPAS NEWSLETTER

Edited by the Center for Pacific and American Studies; biannual publication. A continuation of the *CAS Newsletter*, the *CPAS Newsletter* was first published in March 2001 (latest issue: Vol. 10, No. 2, March 2010) with the aim of publicizing as widely as possible the research activities of the Center. It includes featured articles and comments on the Center's American Studies seminars, essays by seminar speakers, and bibliographical information.



EUROPEAN STUDIES

Yoroppa Kenkyū, edited by the Center for German and European Studies (DESK); first published in 2001 (latest volume: Vol. 9, March 2010); published annually; includes peer-reviewed articles, a featured article, research notes and lecture notes on a variety of topics related to European Studies; contributors, who use a range of different research methodologies, include European Studies



scholars from both within and outside the university, together with policy makers, journalists, and students.

DESK Newsletter

Edited by the Center for German and European Studies (DESK); first published in 2001 (latest volume: Vol.16, April 2010) as one of the outreach activities of the Center; includes information about research activities, symposia, seminars, and publications related to the Center. Essays are contributed by the faculty members and students enrolled in the educational programs associated with the Center, namely ESP, IGK, etc.



STATISTICS (as of May 1, 2010)

■ STAFF

Professors	160
Associate Professors	118
Full-time Lecturers	9
Research Associates and Assistants	73
Research Associates	3
Administrative Personnel	110
Foreign Instructors	4
Part-time Lecturers: from within the Univ. of Tokyo system	720
from outside the Univ. of Tokyo system	456
Other teaching staff	11
Total	1,664

■ ENROLLMENT (UNDERGRADUATE)

Junior Division	
Humanities and Social Sciences I	939
Humanities and Social Sciences II	757
Humanities and Social Sciences III	1,023
Natural Sciences I	2,463
Natural Sciences II	1,183
Natural Sciences III	205
Total	6,570

Senior Division	
Dept. of Interdisciplinary Cultural Studies	71
Dept. of Area Studies	107
Dept. of Social and International Relations	92
Dept. of Basic Science	72
Dept. of General Systems Studies	44
Dept. of Life and Cognitive Sciences	42
Total	428

■ ENROLLMENT (GRADUATE)

Department	Master's	Doctoral	Total
Language and Information Sciences	63	131	194
Interdisciplinary Cultural Studies	88	145	233
Area Studies	82	195	277
Advanced Social and International Studies	90	114	204
Multi-Disciplinary Sciences	240	209	449
Total	563	794	1,357

■ RESEARCH STUDENTS

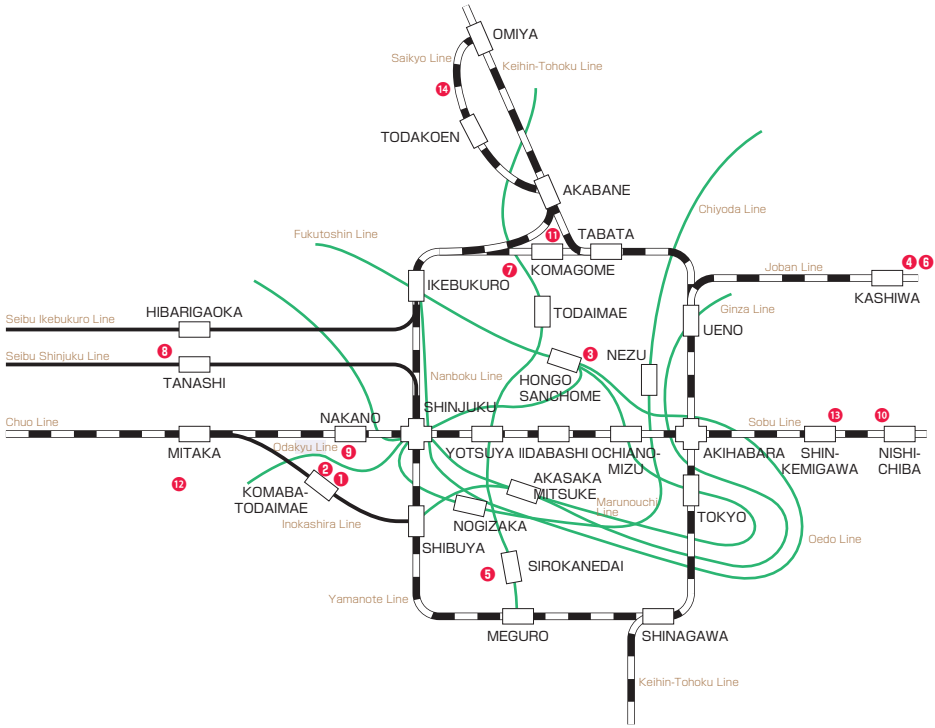
Undergraduate Research Students	9
Undergraduate Auditors	28
Short-term Undergraduate Exchange Students	25
Special Auditors	2
Graduate Research Students	15
Graduate Foreign Research Students	42
Total	121

INTERNATIONAL STUDENTS

	Under graduate	Graduate		Under-graduate Research Students	Short-term Exchange Students	Graduate Foreign Research Students	Graduate Research Students	Graduate Special Research Student	Graduate Special Auditor Student	total
		Master's	Doc-toral							
Bangladesh	3									3
Myanmar		1	1							2
Thailand	5		4							9
Malaysia	6					1				7
Singapore	6	1			3	1				11
Indonesia	3		1		1					5
Philippines					1	1				2
China	(1) 44	22	29		6	9	2	4		(1) 116
South Korea	(2) 31	23	62	1	1	9	1	2		(2) 130
Mongolia	3	1								4
Viet Nam	5	1	1	1	1	2				11
Cambodia			1							1
Taiwan		7	12			8		1	2	30
UAE	1									1
Iran			2							2
Turkey							1			1
Egypt			1		1					2
Australia		1			2	1				4
New Zealand		1				1				2
Canada		2								2
USA		3	1		2	2		5	1	14
El Salvador	1									1
Brazil	(2) 4					2				(2) 6
Argentina	1									1
Paraguay		1								1
Peru			2							2
Colombia						1				1
Sweden	2									2
Norway					1					1
Denmark						1				1
UK					1	1	1			3
Belgium			1							1
Germany		1	1		1					3
France		1	4		3					8
Italy					1					1
Spain						1				1
Poland			1							1
Czech Republic			1							1
Hungary	1									1
Romania	1		1							2
Bulgaria		1	1							2
Russia	(1) 2		3							(1) 5
Slovakia			1							1
Ukraine			1							1
Uzbekistan			1							1
Slovenia			1							1
Kyrgyzstan			1							1
Georgia		1								1
Armenia						1				1
Belarus	(1) 1									(1) 1
total	(7) 120	68	135	2	25	42	5	12	3	(7) 412

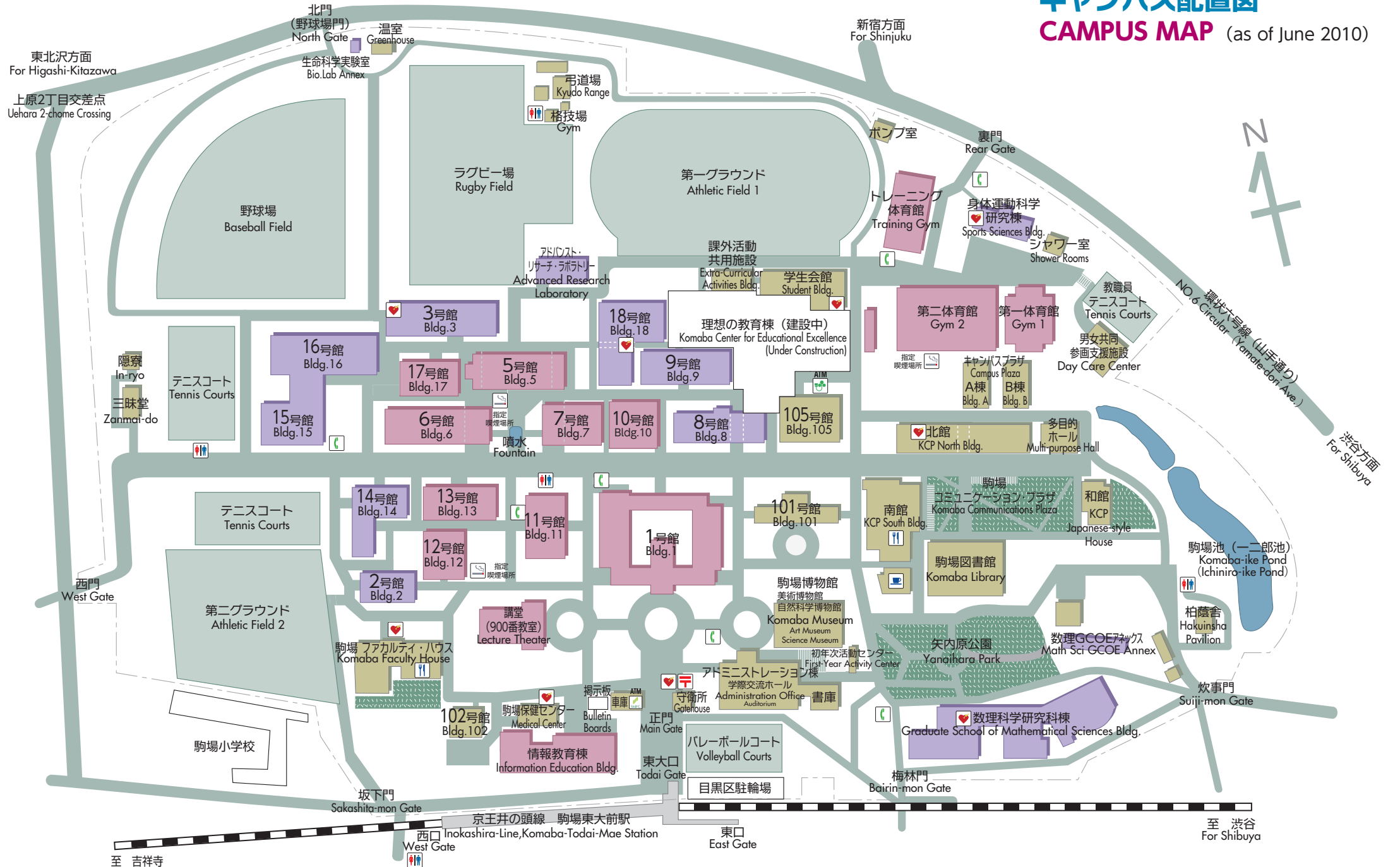
Numbers in parentheses indicate students in the Senior Division.

UNIVERSITY FACILITIES AROUND TOKYO



- 1** Komaba I Campus: College of Arts and Sciences, Graduate School of Arts and Sciences, Graduate School of Mathematical Sciences
- 2** Komaba II Campus: Institute of Industrial Sciences, Research Center for Advanced Science and Technology, Archaeological Excavation Unit, Center for Collaborative Research, Komaba Open Laboratory, International Lodge (Komaba Lodge)
- 3** Hongo Campus: University Headquarters, General Library, Faculties and Graduate Schools, Hospital, Institutes (Earthquake Research, Social Science, Socio-Information and Communication Studies, Historiography, Molecular and Cellular Biosciences, Oriental Culture)
- 4** Kashiwa Campus: Graduate School of Frontier Sciences, Institute for Solid State Physics, Institute for Cosmic Ray Research, Center for Climate System Research, Research into Artifacts, Center for Engineering, Center for Spatial Information Science, High Temperature Plasma Center
- 5** Institute of Medical Science, Shirokanedai International Lodge, Shirokane Dormitory
- 6** Atmosphere and Ocean Research Institute
- 7** Botanical Garden
- 8** Institute for Sustainable Agro-ecosystem Services
- 9** Attached Senior and Junior High Schools
- 10** Chiba Experimental Station of the Institute of Industrial Science
- 11** Toshima Dormitory, Toshima International Hall of Residence
- 12** Mitaka International Hall of Residence
- 13** Kemigawa Athletic Ground
- 14** Boat House

キャンパス配置図 CAMPUS MAP (as of June 2010)



指定喫煙場所 (地図中の3カ所 および各建物の指定場所) 以外は禁煙です
Smoking areas : Smoking is not allowed anywhere on campus except at the three areas designated on the map.

...自動体外式除細動器 (AED) 設置場所
Locations of an Automated External Defibrillator



ACADEMIC CALENDAR (2010-2011)

2010	April 1	Academic Year Begins
	April 7	Summer Semester Instruction Begins (1st and 3rd Semester for the Junior Division) (5th and 7th Semester for the Senior Division)
	July 16	Instruction Ends
	July 20 - 30	Final Examinations (Part 1)
	July 31 - August 31	Summer Vacation
	September 1 - 3	Final Examinations (Part 2)
	September 4 - October 5	Fall Vacation
	October 6	Winter Semester Instruction Begins (2nd and 4th Semester for the Junior Division) (6th and 8th Semester for the Senior Division)
2011	December 25 - January 6	Winter Vacation
	January 31	Instruction Ends
	February 1 - 14	Final Examinations

English Catalog of the
Graduate School of Arts and Sciences
College of Arts and Sciences
The University of Tokyo, Komaba 2010

Edited by the
Public Relations Committee

Published by the
Graduate School of Arts and Sciences
College of Arts and Sciences
The University of Tokyo

3-8-1 Komaba, Meguro-ku
Tokyo 153-8902
Phone 03-5454-6014
<http://www.c.u-tokyo.ac.jp/>

Sobun Printing Co.,Ltd.

Prospectus 2010

The University of Tokyo, Komaba

**GRADUATE SCHOOL OF ARTS AND SCIENCES
COLLEGE OF ARTS AND SCIENCES**