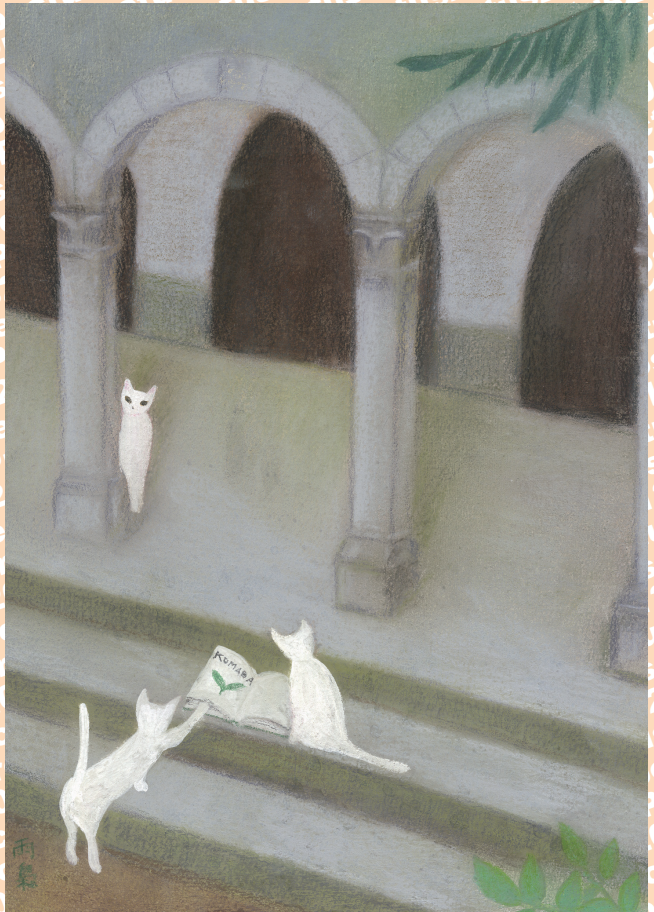


The University of Tokyo, Komaba

Prospectus 2012



Prospectus 2012

The University of Tokyo, Komaba

CONTENTS

ORIGIN AND HISTORY	3
DEANS PAST AND PRESENT	7
CHRONOLOGY	8
ORGANIZATION	10
TEACHING AND INSTRUCTION	11
DEGREE PROGRAMS	16
INTERNATIONAL EXCHANGE	
PROGRAMS	20
UNIVERSITY-WIDE PROGRAM	21
EDUCATIONAL AND RESEARCH	
PROGRAMS	22
AFFILIATED CENTERS AND	
INITIATIVES	23
FACILITIES	24
REGULAR PUBLICATIONS	25
STATISTICS	27
UNIVERSITY FACILITIES	
AROUND TOKYO	29
CAMPUS MAP	30

ORIGIN AND HISTORY

Organization

The Komaba Campus of the University of Tokyo is home to the College of Arts and Sciences, the Graduate School of Arts and Sciences, the Graduate School of Mathematical Sciences, and a number of advanced research facilities and campus services. What is now the College of Arts and Sciences was founded on May 31st, 1949, when the new University of Tokyo started under the present system. Unlike general education sections in other national universities throughout Japan, the College was established as an autonomous institution from the start. The guiding spirits behind this special independence were Tadao Yanaihara, the first Dean of the College, and his colleagues, who believed in an integrated approach to learning aimed at the education of “unbiased individuals with all-round knowledge” and at “fostering the spirit of a life-long quest for truth.” When most universities in Japan abolished their general education sections in the 1990s, the College of Arts and Sciences took a different course; it carried out a thorough reform of its curriculum and has maintained until today its tradition of providing general, “liberal arts” education to all those entering the university in their first two years (Junior Division).

Beginning in October 2012, the Junior Division will welcome students into its newly established PEAK Program (Programs in English at Komaba), in which students may complete their undergraduate degrees entirely in English.

The Senior Division of the College of Arts and Sciences provides specialized education to students in their third and fourth year. It offers a unique, interdisciplinary, international and advanced curriculum that seeks to realize in a more developed form the ideal of the Junior Division, namely the search for new knowledge from an international and global point of view that transcends the traditional barriers between disciplines. The Senior Division began with the establishment of the Department of Liberal Arts in 1951, which was followed by that of the Department of Pure and Applied Sciences in 1962, and has constantly been developing and reforming itself in response to the needs of modern society and the changing times. A thorough reform was carried out again in 2011, resulting in the reorganization of the Senior Division into three new departments. The new Department of Humanities and Social Sciences consists of three sections: Interdisciplinary Cultural Studies, Area Studies, and Social and International Relations. The new Department of Interdisciplinary Sciences, with four divisions in Science and Technology Studies, Geography and Design Sciences, Informatics, and Earth System and Energy Sciences, as well as a sub-program in Evolutionary Sciences, aims at the integration of the arts and the natural sciences. The new Department of Integrated Sciences comprises four divisions in Mathematical Natural Sciences, Matter and Materials Science, Integrated Life Sciences, and Cognitive and Behavioral Sciences, as well as a sub-program in Sports Sciences.

The College instituted its own Graduate Division of International and Interdisciplinary Studies in 1983. This consisted of four programs: Comparative Literature and Culture, Area Studies, International Relations, and Social Relations. Three more programs, Cultural

Anthropology, Multi-Disciplinary Sciences, and Culture and Representation, were later added. The next phase of restructuring began with the creation of Language and Information Sciences (1993). In 1994-95, Multi-Disciplinary Sciences was expanded to embrace Life Sciences, Basic Science, and General Systems Studies. In 1996 the existing six programs in Humanities and Social Sciences were reorganized into three sections of Interdisciplinary Cultural Studies, Area Studies, and Advanced Social and International Studies, thus completing the restructuring of the College's graduate division (renamed the Graduate School of Arts and Sciences in 1996). Furthermore, the Graduate School of Mathematical Sciences was established on the Komaba Campus as an independent institution in 1992. A large number of the staff of this graduate school also teach in the Junior Division of the College of Arts and Sciences.

The Graduate School of Arts and Sciences has, for many years, been producing graduates with the vision and broad base of advanced learning necessary for identifying and meeting the multifaceted challenges of the modern world. This tradition led, in April 2004, to the establishment of the Graduate Program on Human Security (HSP) with the cooperation of its five departments. Starting in April 2012, with the participation of its four arts departments, the Graduate School will be running a new Graduate Program on Global Humanities (GHP), which aims to tackle the problems of the modern world through an approach that transcends the traditional boundaries between disciplines and regions. In October 2012, the Graduate Program on Global Society (liberal arts) and the Graduate Program on Environmental Sciences (integrated liberal arts-sciences), will also begin accepting students. Both of these programs will allow students to earn their degrees by following courses taught only in English. Other programs that have been inaugurated at the Graduate School of Arts and Sciences since 2005 include the Science Interpreter Training Program, aimed at the facilitation of communication between the public and the science and technology community; the European Studies Program and the Japan-Germany Inter-Graduate School Program, both aimed at the implementation of interdisciplinary education and research on modern Europe; and the International Philosophical Education Program on Co-Existence, which seeks to open up new frontiers in the humanities.

A number of special centers have been established to support teaching and research at the College and the Graduate School. One of these recent developments is the Institute for Advanced Global Studies (IAGS), which was established in April 2010, incorporating the existing Center for Pacific and American Studies (CPAS) and Center for German and European Studies (DESK), as well as the three newly founded centers for African Studies, Sustainable Peace, and Sustainable Development. The IAGS was joined a year later in April 2011 by two more new centres, one dedicated to Asian Studies and the other to Middle Eastern Studies (UTCMES). The Komaba Organization for Educational Development (KOMED), established in 2005 to further improve undergraduate teaching in the College of Arts and Sciences, merged with the Center for

Structuring Life Sciences to form the Komaba Organization for Educational Excellence (KOMEX) in April 2010.

The history of the Komaba Campus has therefore been a tale of growth. When it started in 1949, the Junior Division had two sections for human sciences and two sections for natural sciences. Currently there are three sections for each branch, and the total enrollment in the Junior Division is 6,568, double what it was in 1949. There are 432 students in the Senior Division, and 1,345 master's and doctoral students in the Graduate School of Arts and Sciences. The number of permanent faculty members, including professors, associate professors, and full-time lecturers, was 289 as of May 1st, 2012, which is about three and a half times as many as in the year of the establishment of the College.

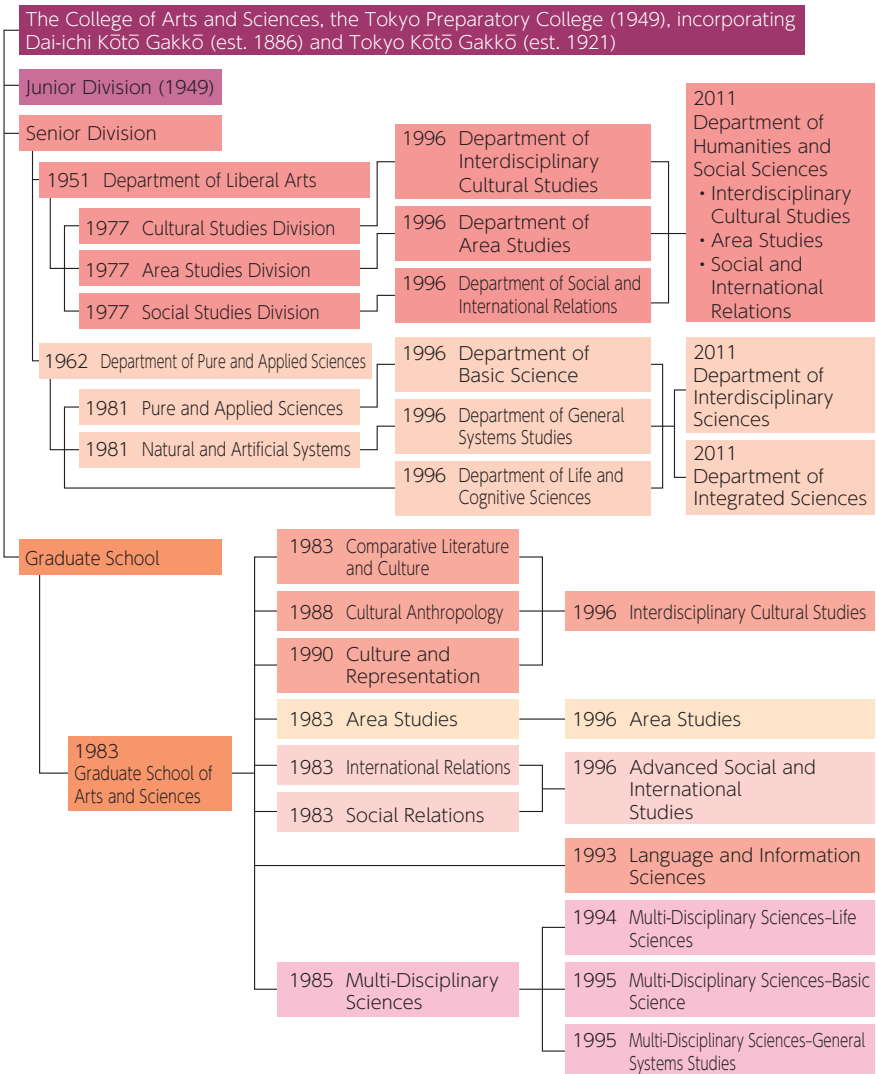
Campus

The Komaba Campus has a long and fascinating history. The campus and its environs were formerly called the Komaba Meadows, the whole area having been set aside as hunting grounds for the ruling Tokugawa family from the time of the eighth Shogun Yoshimune (early 18th century). The estate was said to include a medicinal herb garden as well. The Meadows covered 50 hectares of land, extending over what is now Komaba Park. There is still a small spring on campus, reminding us of how the ancient Musashino plains must have looked.

In 1878, one decade after the Meiji Restoration, the Komaba School of Agriculture was established at the northwestern corner of the grounds, where the College now stands. This School was eventually incorporated into the Tokyo Imperial University, the predecessor of the University of Tokyo, as the Faculty of Agriculture in 1890. Some of the buildings of the school were destroyed by fire during World War II, and the others were all demolished later.

In 1935 the Faculty of Agriculture was transferred to grounds adjacent to the Hongo Campus, and its place was assumed by the Dai-ichi Kōtō Gakkō, the preeminent three-year preparatory school for admission into Imperial Universities. At about the same time, new buildings were constructed at Komaba, following the architectural styles used for the Hongo Campus. When the Dai-ichi Kōtō Gakkō was incorporated into the postwar University of Tokyo, the Komaba Campus finally became the seat of the University's College of General Education, which was later renamed the College of Arts and Sciences. The College was thus reborn from what was left of the war-damaged buildings of the Dai-ichi Kōtō Gakkō and some temporary structures built after World War II. In addition to renovating these buildings, the College also made great efforts to restore and expand the campus gardens. This is one of the reasons why the Komaba Campus boasts so many old trees, including some very rare ones. Many of the famous cherry trees on campus, including those adorning the edges of the Rugby Field, were planted after the war.

Beginning in the 1980s, major improvements were made to the research facilities with the construction of a number of new buildings mainly in the western half of campus. Since 2000, development has concentrated at the eastern end to improve the classroom facilities, as well as facilities for extracurricular activities. The opening in 2006 of the Komaba Communication Plaza with its facilities for theatrical, musical and other extracurricular activities led to a major change in the image of the campus. The year 2011 saw the completion of the Komaba Center for Educational Excellence, which houses studio-type classrooms with special ICT equipment designed to facilitate active learning.



DEANS PAST AND PRESENT

1949. 5.31 –	Tadao YANAIHARA	1985. 2.16 –	Akira TAKEDA
1951.12.14 –	*Isoji ASO	1987. 2.16 –	Hideo MORI
1951.12.21 –	Isoji ASO	1989. 2.16 –	Koichi AOYAGI
1952.12.22 –	Teiji TAKAGI	1991. 2.16 –	Yoshiya HARADA
1954. 3.31 –	Naoshiro TSUJI	1993. 2.16 –	Shigehiko HASUMI
1958. 4. 1 –	Atsushi KAWAGUCHI	1995. 2.16 –	Munetake ICHIMURA
1960. 4. 1 –	Natsuo SHUMUTA	1997. 2.16 –	Wataru OMORI
1963. 4. 1 –	Shigeru AIHARA	1999. 2.16 –	Setsuro ASANO
1966. 4. 1 –	Akio ABE	2001. 2.16 –	Motoo FURUTA
1968. 4. 1 –	Mokichiro NOGAMI	2003. 2.16 –	Makoto ASASHIMA
1968.11.14 –	Jiro TAMURA	2005. 2.16 –	Yoichi KIBATA
1969. 2.14 –	*Sachio TAKAGI	2007. 2.16 –	Norimichi KOJIMA
1969. 2.20 –	Tadashi TAKAHASHI	2009. 2.16 –	Susumu YAMAKAGE
1969. 5.26 –	Tasuku HARA	2011. 2.16 –	Toshikazu HASEGAWA
1971. 4. 1 –	Hajime YAMASHITA		* (Acting Dean)
1972. 3.14 –	Sachio TAKAGI		
1974. 3.14 –	Hiroshi KOYAMA		
1976. 3.14 –	Shozo OMORI		
1978. 1. 1 –	Motoo KAJI		
1980. 1. 1 –	Hiroshi ISODA		
1982. 1. 1 –	Nagayo HONMA		
1984. 1. 1 –	Shoichiro KOIDE		
1985. 1.10 –	*Hideo MORI		

EXECUTIVE STAFF (2012)

Dean, Graduate School of Arts and Sciences / College of Arts and Sciences

Vice-Dean, Senator

Vice-Dean

Vice-Dean

Vice-Dean

Administrative Manager, Vice-Dean

Toshikazu HASEGAWA

Takashi NAGATA

Takane ITO

Motoyuki MATSUO

Naoki OGOSHI

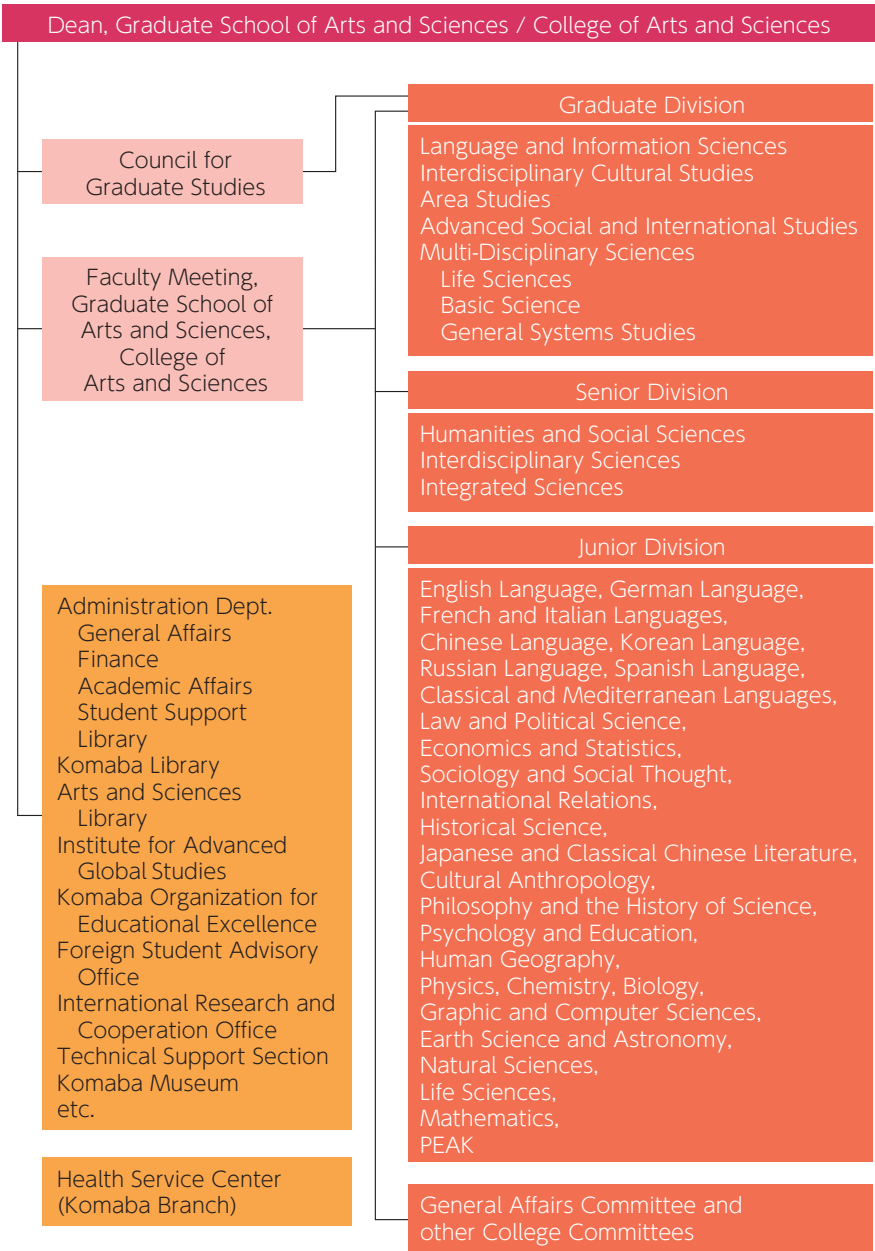
Takashi SEKIYA

CHRONOLOGY

- 1949.5 College of General Education (Kyōyō Gakubu) established by amalgamating Dai-ichi Kōtō Gakkō and Tokyo Kōtō Gakkō, to form part of the University of Tokyo (formerly Tokyo Imperial University) under the new National University Establishment Law.
- 1949.6 First matriculation of students at the College of General Education (1,804 entered including 9 women).
- 1950.3 Dai-ichi Kōtō Gakkō abolished.
- 1951.3 Tokyo Kōtō Gakkō abolished.
- 1951.4 Department of Liberal Arts (Kyōyō Gakka) established in the College.
- 1952.6 Students' Clinic opened.
- 1953.3 Graduation of the first class of students of the University under the new system, including 51 Bachelors of Liberal Arts, from the College.
- 1953.4 Student Counseling Center opened.
- 1962.4 Department of Pure and Applied Sciences (Kiso Kagakuka) established in the Senior Division of the College.
- 1964.4 Komaba Department of the Administration Bureau created (General Affairs, Academic Affairs, and Student Affairs Divisions).
- 1965.6 "Komaba-Todai-Mae" station on the Inokashira Line opened, replacing "Komaba" and "Todai-Mae" stations.
- 1967.1 Students' Clinic reorganized as the Komaba Branch of the newly-established Health Service Center of the University.
- 1967.6 The Center for American Studies established.
- 1975.4 Library Division established.
- 1977.4 Reorganization of the Department of Liberal Arts.
- 1979.7 30th anniversary of the establishment of the College celebrated.
College of General Education: The First Thirty Years published.
- 1981.4 Reorganization of the Department of Pure and Applied Sciences:
Department of Natural and Artificial Systems established.
Finance Division established.
- 1983.4 Graduate Division of International and Interdisciplinary Studies (Sōgō Bunka Kenkyūka) established in the College.
College of General Education renamed College of Arts and Sciences.
- 1987.4 Komaba Branch of the Educational Computer Center opened.
- 1989.6 40th anniversary of the establishment of the College celebrated.
College of Arts and Sciences: The First Forty Years published.
- 1989.10 Academic Guidance Center opened.
- 1992.4 Graduate School of Mathematical Sciences established.
- 1993.4 Graduate Department of Language and Information Sciences established.
New curriculum for the Junior Division of the College implemented.
- 1993.6 Mitaka International Hall of Residence opened (Komaba Student Dormitory abolished).
- 1994.4 Graduate Department of Multi-Disciplinary Sciences-Life Sciences established.

- Reorganization of Graduate Departments of Multi-Disciplinary Sciences–Basic Science and Multi-Disciplinary Sciences–General Systems Studies begun.
- 1995.4 Graduate Departments of Multi-Disciplinary Sciences–Basic Science and Multi-Disciplinary Sciences–General Systems Studies restructured.
- 1996.2 Graduate Division of International and Interdisciplinary Studies renamed Graduate School of Arts and Sciences.
- 1996.4 Graduate Programs of Comparative Literature and Culture, Cultural Anthropology, and Culture and Representation integrated and restructured as Interdisciplinary Cultural Studies. Graduate Programs of Social Relations and International Relations integrated and restructured as Advanced Social and International Studies. Graduate Program of Area Studies restructured into a department. Restructuring of the Graduate School of Arts and Sciences completed. Undergraduate (Senior) Department of Liberal Arts reorganized into Department of Interdisciplinary Cultural Studies, Department of Area Studies, and Department of Social and International Relations. Department of Pure and Applied Sciences and Department of Natural and Artificial Systems reorganized into Department of Basic Science, Department of General Systems Studies, and Department of Life and Cognitive Sciences.
- 1999.4 Komaba Branch of the Educational Computer Center reorganized into the Information Technology Center.
- 2000.4 Center for American Studies reorganized into the Center for Pacific and American Studies.
- 2000.11 College of Arts and Sciences 50th Anniversary Symposium : "Exploring the Role of the University in the 21st Century."
- 2001.12 *Fifty Years of Komaba, 1949-2000* published.
- 2002.10 Opening of the new Komaba Library.
- 2004.4 The University of Tokyo reorganized as an incorporated national university.
- 2005.4 Komaba Organization for Educational Development established.
- 2006.4 New curriculum for the Junior Division of the College implemented.
The North Building of Komaba Communication Plaza opened.
- 2006.6 Administration offices restructured.
- 2006.10 The whole complex of Komaba Communication Plaza opened.
- 2009.3-10 Commemoration of the 60th anniversary of the establishment of the College of Arts and Sciences.
- 2010.4 Komaba Organization for Educational Excellence and Institute for Advanced Global Studies established.
- 2011.4 Senior Division of the College of Arts and Sciences restructured into Department of Humanities and Social Sciences, Department of Interdisciplinary Sciences, and Department of Integrated Sciences.
- 2011.5 21 Komaba Center for Educational Excellence opened.
- 2012.4 Graduate Program on Environmental Sciences established.
- 2012.10 PEAK (Programs in English at Komaba) established.

ORGANIZATION



TEACHING AND INSTRUCTION

Education at Komaba is provided at three different levels: the Junior Division, the Senior Division, and the Graduate School.

■ Junior Division

The College of Arts and Sciences consists of the Junior Division and the Senior Division. All undergraduate students of the University of Tokyo undertake their first two years of study (“Junior Division”) at the College of Arts and Sciences on the Komaba Campus. All students belong to one of six streams: Humanities and Social Sciences I through III or Natural Sciences I through III. The curriculum for each of these streams is directed mainly toward specialization in Senior Division undergraduate courses in the following Faculties.

Junior Division

Humanities and
Social Sciences I

Humanities and
Social Sciences II

Humanities and
Social Sciences III

Natural Sciences I

Natural Sciences II

Natural Sciences III

Senior Division

Faculties of Law and Arts and Sciences

Faculties of Economics and Arts and Sciences

Faculties of Letters, Education, and Arts and Sciences

Faculties of Engineering, Science, Pharmaceutical Sciences,
Agriculture, Medicine, and Arts and Sciences

Faculties of Agriculture, Science, Pharmaceutical Sciences,
Medicine, Engineering, and Arts and Sciences

Faculties of Medicine and Arts and Sciences

At the end of the third semester, majors are decided according to each student's preferences and academic performance, and departmental capacity. The great majority of students move on to one of the above Faculties, which are located largely on the Hongo Campus. The others pursue Senior Division courses on the Komaba Campus. The College's Senior Division, Faculty of Arts and Sciences, accepts students from any of the six streams in the Junior Division. In 2008, a new admission system started in which there is greater flexibility for students in choosing their departments for senior study.

The curriculum in the Junior Division consists of Foundation Courses, Integrated Courses, and Thematic Courses. During their initial three semesters in the Junior Division, students study subjects included in these courses. In their fourth semester, students combine Junior Division courses and specialized courses, with appropriate shifts in emphasis prescribed by each Faculty or Department in the Senior Division.

In April 2008, ALESS (Active Learning of English for Science Students) started as a required course for science students in the core English program. The aim of the course

is to develop the skills necessary to write a short scientific paper and to make an academic presentation in English. Classes have a maximum of 15 students and are taught in English by teachers who are either native speakers of English or have native-level English language skills.

■ Senior Division (Specialized Education)

The Senior Division at Komaba, the Faculty of Arts and Sciences, was reorganized into three departments in the academic year 2011. The primary goal of the Senior Division is to foster a broad understanding of the complex issues facing human society in the 21st century. It has been organized based on the assumption that in order to respond effectively to these diverse contemporary problems, students need to be able to discern and transcend existing systems of categorization. Constant attention to curriculum reform within the Senior Division therefore embodies an ongoing search for effective ways to combine a solid academic grounding with cutting-edge specialized education. As a small and highly selective educational unit, the Division is also able to make productive use of students' input and creativity. From the tradition established at the time of its original establishment as the Department of Liberal Arts and the Department of Pure and Applied Sciences, Komaba's Senior Division continues to produce widely respected graduates ready to contribute their creative intelligence and problem-solving skills to society. While a significant number choose to pursue graduate studies, others pursue a career in civil service, in the corporate world, in educational or research institutions.

The Senior Division consists of the following departments.

● Department of Humanities and Social Sciences

Interdisciplinary Cultural Studies; Area Studies; Social and International Relations; Japan in East Asia.

● Department of Interdisciplinary Sciences

Science and Technology Studies; Geography and Design Sciences; Informatics; Earth System and Energy Sciences; Evolutionary Sciences; Environmental Sciences.

● Department of Integrated Sciences

Mathematical Natural Sciences; Matter and Materials Science; Integrated Life Sciences; Cognitive and Behavioral Sciences; Sports Sciences.

● SHORT-TERM STUDENT EXCHANGE PROGRAM (AIKOM)

The AIKOM (Abroad In Komaba) Program is a one-year undergraduate exchange program between the University of Tokyo and 30 partner universities in 20 countries. It

is operated under a formal short-term exchange agreement, which stipulates mutual tuition waiver (whereby participating students pay full tuition to their home university), and credit transfer (whereby credits earned during the study year abroad and which fulfill stated requirements are recognized by the students' home universities). Applications are solicited from students in the Senior Division of the College (except for a few Departments) and students of the partner universities. The College now sends and receives more than 25 students each year.

A special curriculum is provided for AIKOM students at Komaba, which includes courses offered in English, such as Special Relay Lectures and Seminars on Japanese Studies, Dynamics of Japanese Cultural History, Aspects of Japanese Society, Specialized Courses on Japanese Studies, Japanese Language, and Directed Independent Study. All of these courses, except for the Japanese Language Courses and Directed Independent Study, are open to regular students in the Senior Division of the College. AIKOM students who have fulfilled requirements for the special curriculum are also free to take regular courses in the College's Senior Division according to their academic interests and Japanese language proficiency.

The partner universities are as follows:

Asia: Peking University, Nanjing University, and Fudan University (China), Gadjah Mada University (Indonesia), Seoul National University (South Korea), University of Malaya (Malaysia), University of the Philippines (Philippines), Vietnam National University, Hanoi (Vietnam), National University of Singapore (Singapore)

Oceania: Monash University, University of Melbourne, and University of Sydney (Australia), University of Auckland and University of Otago (New Zealand)

North and South America: University of Michigan, Swarthmore College, University of Washington, Johns Hopkins University (USA), University of Toronto (Canada), Pontifical Catholic University of Chile (Chile)

Europe: Universités Associées de Grenoble, Université de Strasbourg, and Institut d'Etudes Politiques de Paris (France), Ludwig-Maximilians-University of Munich (Germany), University of Warwick (UK), University of Geneva (Switzerland), Università degli Studi di Roma "La Sapienza" (Italy), Uppsala University (Sweden), and Trinity College Dublin, University of Dublin (Ireland)

Africa: Cairo University (Egypt)

■ Graduate School of Arts and Sciences

The Graduate School of Arts and Sciences was established with the primary objective of providing opportunities for students to deepen the knowledge acquired during their undergraduate years. Reflecting its interdisciplinary and international spirit, the Graduate School is committed to train not only scholars in specialized academic fields, but also professionals whose expertise will enable them to make great social contributions in a variety of practical fields.

In the list of departments below, those in parentheses indicate shared inter-departmental specializations.

● Language and Information Sciences

Foundations of Scientific Linguistics; Language and Information Analysis; International Communication; Text Analysis; Language Acquisition; Japan and Korea Language Ecology.

● Interdisciplinary Cultural Studies

Culture Dynamics; Culture and Representation; Cultural Anthropology; Cultural Complexity; Comparative Literature and Culture; (Comparative Ethnography).

● Area Studies

Multidimensional Analysis of World Structure; European and Russian Area Studies; Mediterranean and Islamic Area Studies; North, Central and South American Area Studies; Asia Pacific Area Studies; (Indian Ocean Area Studies; Pacific and American Area Studies).

● Advanced Social and International Studies

International Cooperation; International Relations; Public Policy; Interdisciplinary Studies in Social Sciences; (Comparative Politics).

● Multi-Disciplinary Sciences

Life Sciences

Biological Responses to Environmental Information;

Bio-informatics; Biofunctionality; Exercise Adaptability; Cognitive and Behavioral Sciences; (Informatics and Media Technology).

Basic Science

Foundations of Science and Technology; Structures in Natural Sciences; Theory in Complex Systems; Analysis of Material Functionality; Material Measurementation; Material Design.

General Systems Studies

Systems Theory; Information Systems; Global Systems; Complex Systems Planning.

● Graduate Programs Offered Entirely in English

Graduate Program on Environmental Sciences.

Graduate Program on Global Society.

● Cross-Departmental Programs

Graduate Program on Human Security; European Studies Program; Japanese–German International Joint Graduate School; Science Interpreter Training Program; Global Humanities Program.

■ Sponsored Programs

The following programs have been made possible by external benefactors:

Programs / Benefactors

- Establishment of prevention and treatment of mesothelioma / Nichias Corporation (April 2007–March 2012)
- Regulation of cell and organ formation / Wako Pure Chemical Industries, Ltd. (April 2007–March 2012)
- Laboratory of tissue plasticity science / Masahide Co. Ltd. (October 2009–September 2012)
- Human Mobility Studies / Hogakukan Co. Ltd. (April 2010–March 2015)
- Sultan Qaboos Chair in Middle East Studies / Sultanate of Oman (April 2011–)
- Uehiro Research Division for Philosophy of Co-Existence / the Uehiro Foundation on Ethics and Education (May 2012–March 2017)



Degree Programs

◆ Graduate Program on Human Security (HSP)

<http://hsp.c.u-tokyo.ac.jp/index.html>

Human Security is a new concept focusing on the development of a more humane global society for the 21st century. In order to nurture “human assets” who will make innovative contributions in this area, the Graduate Program on Human Security (HSP) was launched in April 2004. The HSP offers Master’s and Doctoral courses based on close coordination among the five departments in the Graduate School of Arts and Sciences. Each year around 16 students are accepted into the Master’s course and 4 students into the Doctoral course. These students receive M.A. and Ph.D. degrees in Human Security Studies when they complete the program.

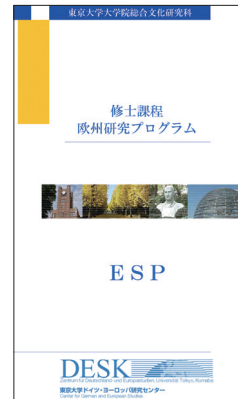
The HSP holds a variety of seminars and symposiums throughout the year with practitioners as well as researchers in the field of human security.



◆ European Studies Program (ESP)

<http://www.desk.c.u-tokyo.ac.jp/j/esp.html>

The ESP is a master’s-level program that aims at training specialists in European Studies. In this program, students acquire basic knowledge and the methodologies required to undertake studies concerning Europe through its core courses, which include Methodologies of European Studies, Supervised Readings and the European Fall Academy (EFA) held for 2 weeks in Germany. ESP students obtain an MA in European Studies by submitting a thesis on a relevant topic and successfully completing the curriculum. Graduates of this program are expected to be instrumental in acting as a bridge between Europe and Japan.



◆Japanese-German International Joint Graduate School (IGK)

<http://igk.c.u-tokyo.ac.jp/>

The IGK is a program aimed at the promotion of joint research and education conducted by the University of Tokyo and the University of Halle in Germany. This program was initiated in 2007 with the support of the Japan Society for the Promotion of Science and the German Research Foundation. Every year there are exchanges of graduate students and professors for joint research and education. We hold joint classes during the semester and semi-annual joint seminars in Halle and Komaba; in addition, we conduct an international joint research project concerning the changing modes of civil society from a German-Japanese comparative perspective.



◆Global Humanities Program (GHP)

<http://ghp.c.u-tokyo.ac.jp/ja/>

We are living in a complicated age in which the progress of globalization is leading to growing global unification. At the same time this process of globalization also reveals the pluralized nature of global society, characterized by differences in ethnicity, gender, social class and so on. In times like these the ability to understand and to communicate with others in an interactive way while positioning ourselves against the global background is of paramount importance. The goal of the Graduate Program on Global Humanities is to foster this kind of ability by educating people who can contribute to the realization of a pluralist global society.



Degree Programs

◆PEAK (Programs in English at Komaba)

<http://peak.c.u-tokyo.ac.jp/>

The University of Tokyo's Programs in English at Komaba (PEAK) admit a select number of students who exhibit the potential for intellectual growth and leadership, and can contribute to the diversification of the campus with their cultural and educational backgrounds, in line with the University's initiative to establish a global campus and nurture global leaders.

PEAK consists of the "International Program on Japan in East Asia" and the "International Program on Environmental Sciences." The aim of these undergraduate degree programs is to share the rich intellectual and educational resources of the University with the wider global community. Classes are taught in English, but students also have an opportunity to learn the Japanese language during their studies.

Students in the "Japan in East Asia" program gain an international and interdisciplinary understanding of East Asia's past, present and future with a particular focus on Japan. The program encourages students to develop the skills and knowledge necessary to foster constructive dialogues within East Asia and around the world. Students are expected to actively engage with the educational and cultural environment at the University. See below for the "Environmental Sciences" Program.

◆Organization for Program on Environmental Sciences (Undergraduate and Graduate Programs)

<http://gps.c.u-tokyo.ac.jp/introduction/index-jp.html>

The Program on Environmental Sciences consists of undergraduate and graduate degree programs (Master's and Ph.D.). All courses in this program are delivered in English by about 60 faculty members from a variety of departments at the University of Tokyo. The goal of this program is to provide students with a broad, interdisciplinary and multidisciplinary understanding of the complex topic of environmental sciences. To achieve this goal, the organization covers the following six areas: ① Environmental Principles, ② Management and Policy, ③ Measurement and Evaluation, ④ Materials, Systems and Dynamics, ⑤ Energy and Resources, ⑥ Health and Security. Students enrolled in the undergraduate program develop a unique set of skills, allowing them to propose, define, analyze, and critique environmental policy from an economic, cultural and political viewpoint, based on a platform of basic science and technology, which covers aspects from basic physics and chemistry to environmental processes such as ecological systems and methods for measuring global material circulation. The graduate program proceeds further and deeper, allowing students to choose their area of specialization from a wide range of relevant fields including natural and agricultural sciences, industrial technologies, economics, politics and other related disciplines.

◆ Graduate Program on Global Society (GSP)

<http://gsp.c.u-tokyo.ac.jp/>

The Graduate School of Arts and Sciences will launch a new Graduate Program on Global Society (GSP) in the fall of 2012. Focusing on the theme of human existence in the age of globalization, this program seeks to provide agenda-shaping and problem-solving leadership for a multipolar world. New trends in globalization require us to assume fresh perspectives and reconsider humanities and social sciences to better understand the political, social, ecological, cultural and ethical dimensions of the human condition. The GSP offers innovative, highly relevant and in-depth approaches to the challenges of a globalized civil society. It will enable the development of innovative forms of global governance to address increasingly complex global issues. Students from all over the world are welcome to participate in the GSP program, conducted in English, toward their M.A. or Ph.D. degrees in Global Studies.



Graduate Program on
Global Society



International Exchange Programs

◆Todai Liberal Arts Program (LAP)

<http://www.lap.c.u-tokyo.ac.jp/ja/>

It is the mission of LAP to pursue the possibility of a new kind of liberal arts education in Asia by transmitting our university's lectures throughout Asia and by encouraging academic exchanges between Japanese and Asian universities. So far we have delivered the new kind of liberal arts education, which combines the humanities and sciences, primarily to Chinese universities. Nanjing University is our main partner and for six years we have sent about ten professors every year in March to conduct intensive seminars and lectures. Since 2010, we have begun sending students of our university to China and having both Japanese and Chinese students take the same lectures and engage in discussion. In 2012, our staff members visited Melbourne University and discussed starting a new lecture series and student exchange in Australia.



TODAI Liberal Arts Program
東京大学教養教育創新工程

◆East Asia Liberal Arts Initiative (EALAI)

<http://www.ealai.c.u-tokyo.ac.jp>

Originally launched in 2005, the East Asia Liberal Arts Initiative (EALAI) conducts educational and academic exchanges with institutions of higher education both within East Asia and elsewhere, with the aim of establishing new models of liberal arts education suited to the cultural and social needs of the East Asian region. Since its establishment, EALAI has been playing a central role in the organisation of the annual BESETOHA Forum, a forum for sharing the latest academic and educational achievements between Peking University, Seoul National University, The University of Tokyo, and the Vietnam National University, Hanoi. New innovative educational programs implemented by EALAI include the joint e-lecture series on Asian cultures and economies with SNU and VNU-Hanoi, which began in 2008, and the Zensho-UT Japan Studies Program in VNU-Hanoi, launched in 2012.



International Exchange Programs

◆SHORT-TERM STUDENT EXCHANGE PROGRAM (AIKOM)

<http://park.itc.u-tokyo.ac.jp/aikom/>

The AIKOM (Abroad in Komaba) Program is a one-year undergraduate exchange program between the College of Arts and Sciences and 30 partner universities in 20 countries. It is operated under formal short-term exchange agreement that stipulates mutual tuition waivers (whereby participating students pay full tuition to their home institutions), and credit transfer (whereby credits earned during the study year abroad are recognized by the students' home institutions). Applications are solicited from students in the Senior Division of the College (except for a few Departments) and students of the partner institutions. The College now sends and receives more than 25 students each year.



A special curriculum is provided for incoming exchange students at Komaba, which includes courses offered in English on Japanese Cultural and society, and Japanese Language courses.

University-Wide Program

◆Science Interpreter Training Program <http://science-interpreter.c.u-tokyo.ac.jp/>

This is a university-wide minor program for selected graduate students with the aim of nurturing leading figures who can bridge science/technology and society. The curriculum of at least one year and a half offers programs for students to acquire varied and critical ways of thinking and to master writing, presenting and interviewing skills, in cooperation with distinguished instructors both on- and off-campus. It focuses not only on "how to communicate," but also on "what to communicate." The graduates of this program are working actively in a wide range of fields, including research and development, science and technology policy, education, and journalism. In 2012, we have extended the graduate program to third and fourth-year undergraduate students as well as some seminars for first and second-year students.



Educational and Research Programs

◆ IAGS: Institute for Advanced Global Studies

<http://www.c.u-tokyo.ac.jp/info/research/organization/iags/index.html>

CPAS: Center for Pacific and American Studies

<http://www.cpas.c.u-tokyo.ac.jp/>

DESK: Deutschland- und Europastudien in Komaba

<http://www.desk.c.u-tokyo.ac.jp/j/index.html>

European Studies Program

<http://www.c.u-tokyo.ac.jp/index.html>

IGK: Internationales Graduiertenkolleg

<http://www.c.u-tokyo.ac.jp/index.html>

Center for African Studies

<http://www.c.u-tokyo.ac.jp/info/research/organization/iags/africa/>

Research Center for Sustainable Peace

<http://www.c.u-tokyo.ac.jp/info/research/organization/iags/peace/>

Research Center for Sustainable Development

<http://www.c.u-tokyo.ac.jp/info/research/organization/iags/development/>

UTCMES: The University of Tokyo Center for Middle Eastern Studies

<http://park.itc.u-tokyo.ac.jp/UTCMES/>

Center for Asian Studies

Research Division for the Mediterranean Areas

◆ Graduate Program on Environmental Sciences

<http://gps.c.u-tokyo.ac.jp/introduction/>

◆ KOMEX: Komaba Organization for Educational Excellence

<http://www.c.u-tokyo.ac.jp/info/research/organization/komex/>

ALESS: Active Learning of English for Science Students

<http://aless.ecc.u-tokyo.ac.jp/>

Affiliated Centers and Initiatives

◆ **Research Center for Complex Systems Biology**

<http://rcis.c.u-tokyo.ac.jp/index.html>

◆ **Center for Evolutionary Cognitive Sciences**

<http://ecs.c.u-tokyo.ac.jp/>

◆ **EALAI: East Asia Liberal Arts Initiative**

<http://www.lap.c.u-tokyo.ac.jp/ja/>

◆ **The University of Tokyo Center for Philosophy**

<http://utcp.c.u-tokyo.ac.jp/>

◆ **CGCS: Center for Global Communication Strategies**

Facilities

◆ The Komaba College/Graduate Library	http://lib.c.u-tokyo.ac.jp/
◆ The Komaba Museum	http://museum.c.u-tokyo.ac.jp/
◆ Komaba Student Counseling Center (Bldg. 1)	http://kscc.c.u-tokyo.ac.jp/
◆ Academic Guidance Center	http://park.itc.u-tokyo.ac.jp/agg/
◆ Health Promotion Division, Health Service Center, Komaba Branch	http://www.hc.u-tokyo.ac.jp/
◆ Komaba International Office	http://komaba.io.c.u-tokyo.ac.jp/en/
◆ International Research and Cooperation Office	http://komaba.io.c.u-tokyo.ac.jp/student/sougo/kokusaikenkyu.html
◆ Technical Support Section	http://tech.c.u-tokyo.ac.jp/
◆ Intellectual Property Office	
◆ Komaba Campus Planning office	
◆ Advanced Research Laboratory	
◆ Komaba Faculty House	
◆ Day Care Center	http://www4.ocn.ne.jp/~komabaho
◆ Office for Educational and Research Data Analysis	

REGULAR PUBLICATIONS

①



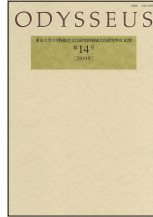
②



③



④



⑤



⑥



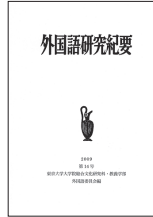
⑦



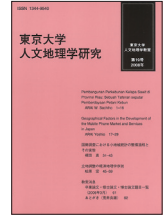
⑧



⑨



⑩



① LANGUAGE, INFORMATION, TEXT

Gengo jōhō Tekusuto, edited by the Graduate Department of Language and Information Sciences.

② LANGUAGE AND INFORMATION SCIENCES

Gengo jōhō Kagaku, edited by the Graduate Department of Language and Information Sciences.

③ INTERDISCIPLINARY CULTURAL STUDIES

Edited by the Department of Interdisciplinary Cultural Studies, Graduate School of Arts and Sciences.

④ ODYSSEUS: THE PROCEEDINGS OF THE GRADUATE DEPARTMENT OF AREA STUDIES

Odysseus, edited by the Graduate Department of Area Studies.

⑤ THE KOMABA JOURNAL OF AREA STUDIES

Nempō Chiiki Bunka Kenkyū, edited by the Graduate Department of Area Studies.

⑥ ADVANCED SOCIAL AND INTERNATIONAL STUDIES

Kokusai Shakai Kagaku, edited by the Graduate Department of Advanced Social and International Studies.

⑦ FRONTIÈRE

Sōgō-bunka-kenkyū-ka Kōiki-kagaku-senkō Nempō, edited by the Graduate Department of Multi-Disciplinary Sciences.

⑧ THE ARCHIVE FOR PHILOSOPHY AND THE HISTORY OF SCIENCE

Tetsugaku Kagaku-shi Ronsō, edited by The Archive for Philosophy and the History of Science Editorial Committee.

⑨ THE PROCEEDINGS OF THE FOREIGN LANGUAGE SECTIONS

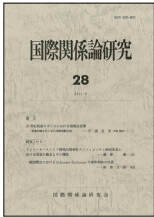
Gaikokugo Kenkyū Kiyō, edited by the Foreign Language Committee.

⑩ KOMABA STUDIES IN HUMAN GEOGRAPHY

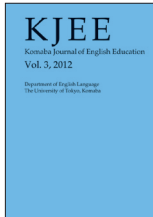
Tokyo Daigaku Jinbun-chirigaku Kenkyū, edited by the Department of Human Geography.

REGULAR PUBLICATIONS

⑪



⑫



⑬



⑭



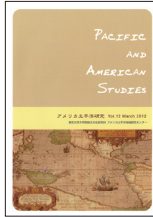
⑮



⑯



⑰



⑱



⑲



⑳



⑪ STUDIES ON INTERNATIONAL RELATIONS

Kokusai-kankei-ron Kenkyū, edited by the Association of International Relations Studies.

⑫ KOMABA JOURNAL OF ENGLISH EDUCATION (KJEE)

Edited by the Department of English Language, College of Arts and Sciences.

⑬ THE THESIS COLLECTION OF THE SCIENCE INTERPRETER TRAINING PROGRAM

Published yearly.

⑭ THE BULLETIN OF THE KOMABA STUDENT COUNSELING CENTER

Komaba Gakuseisōdanjo Kiyō, edited by Komaba Student Counseling Center.

⑮ KYOYO GAKUBU HO (The Newsletter of the College of Arts and Sciences)

<http://www.c.u-tokyo.ac.jp/info/about/booklet-gazette/bulletin/>

Edited by the Gakubu-hō Committee.

⑯ KOMABA 20XX (The Annual Report on Staff Achievements)

<http://www.c.u-tokyo.ac.jp/info/about/annualreport/>

Edited by the Public Relations Committee.

■ Institute for Advanced Global Studies

⑰ PACIFIC AND AMERICAN STUDIES

Amerika Taiheiyō Kenkyū, edited by the *Pacific and American Studies* Editorial Committee.

⑱ CPAS NEWSLETTER

Edited by the Center for Pacific and American Studies.

⑲ EUROPEAN STUDIES

Yōroppa Kenkyū, edited by the Center for German and European Studies (DESK).

⑳ DESK Newsletter (Electronic version)

http://www.desk.c.u-tokyo.ac.jp/j/books_bk_nl.html

Edited by the Center for German and European Studies (DESK).

STATISTICS (as of May 1, 2012)

■ STAFF

Professors	159
Associate Professors	119
Full-time Lecturers	11
Research Associates and Assistants	74
Research Associates	2
Administrative Personnel	110
Foreign Instructors	4
Part-time Lecturers: from within the Univ. of Tokyo system	726
from outside the Univ. of Tokyo system	456
Other teaching staff	12
Total	1,673

■ ENROLLMENT (UNDERGRADUATE)

Junior Division	
Humanities and Social Sciences I	914
Humanities and Social Sciences II	765
Humanities and Social Sciences III	1,024
Natural Sciences I	2,466
Natural Sciences II	1,197
Natural Sciences III	202
Total	6,568

Senior Division	
Dept. of Interdisciplinary Cultural Studies	70
Dept. of Area Studies	124
Dept. of Social and International Relations	89
Dept. of Basic Science	68
Dept. of General Systems Studies	42
Dept. of Life and Cognitive Sciences	39
Total	432

■ ENROLLMENT (GRADUATE)

Department	Master's	Doctoral	Total
Language and Information Sciences	59	142	201
Interdisciplinary Cultural Studies	93	133	226
Area Studies	80	183	263
Advanced Social and International Studies	84	110	194
Multi-Disciplinary Sciences	249	212	461
Total	565	780	1,345

■ RESEARCH STUDENTS

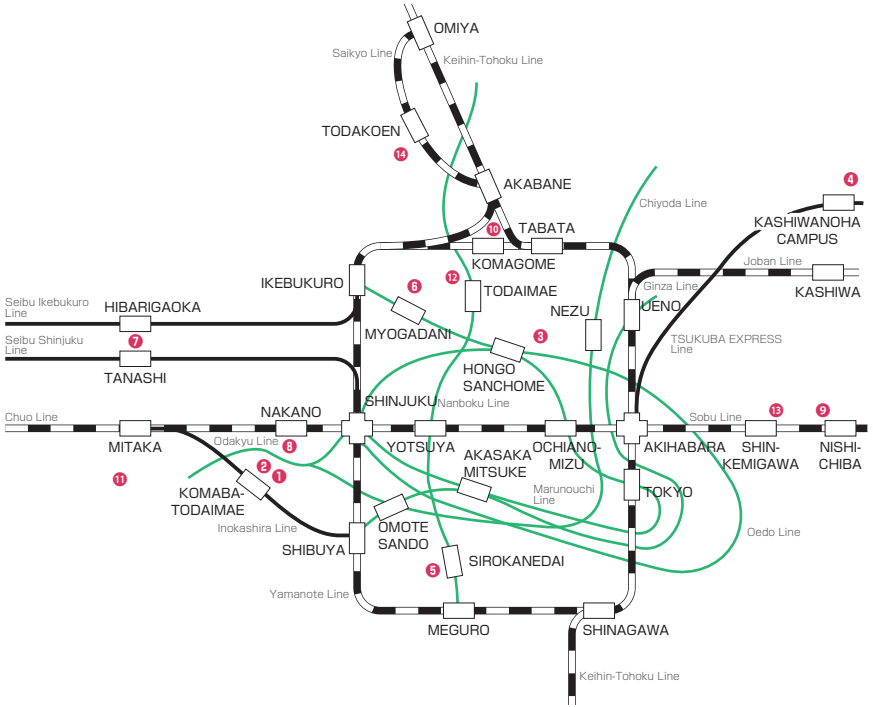
Undergraduate Research Students	2
Undergraduate Auditors	27
Short-term Undergraduate Exchange Students	18
Special Auditors	18
Graduate Research Students	14
Graduate Foreign Research Students	34
Total	113

INTERNATIONAL STUDENTS

	Under-graduate	Graduate		Under-graduate Research Students	Short-term Exchange Students	Graduate Foreign Research Students	Graduate Research Students	Graduate Special Research Students	Special Auditors	Total
		Master's	Doc-toral							
Nepal	1	1								2
Myanmar			2							2
Thailand	12	1	2							15
Malaysia	(1) 1				1					(1) 2
Singapore	3		1		1					5
Indonesia	2		1		2					5
Philippines		1			1	1				3
Hong Kong	1					1				2
South Korea	(4) 37	12	68			9	1			(4) 127
Mongolia	4									4
Vietnam	3	1	1		2					7
China	(2) 37	30	22	1	3	10		3		(2) 106
Cambodia			1							1
Macau	1									1
Taiwan	1	7	12			1	1		1	23
Inner Mongolia			2							2
Iran	1		1							2
Israel						1				1
U.A.E.	1									1
Egypt			1							1
Australia		1			1			1		3
New Zealand		1	1		1					3
Canada			1		1	1		1		4
U.S.A.		1	1		1	1				4
Brazil	(1) 1	3				1				(1) 5
Argentina	(1) 1									(1) 1
Peru			2							2
Finland	2									2
Sweden	(1) 1									(1) 1
U.K.					1	1				2
Belgium							1			1
Netherlands			1							1
Germany			1		1				2	4
France			4		2					8
Italy					1	1				2
Austria						1				1
Switzerland								1		1
Poland		2								2
Czech			1							1
Bulgaria			1			1				2
Slovakia			1							1
Ukraine			1			1				2
Uzbekistan			1							1
Kyrgyz			1							1
Georgia			1			1				2
Turkmenistan	1									1
total	(10) 111	61	132	1	19	32	3	8	3	(10) 370

Numbers in parentheses indicate students in the Senior Division.

UNIVERSITY FACILITIES AROUND TOKYO

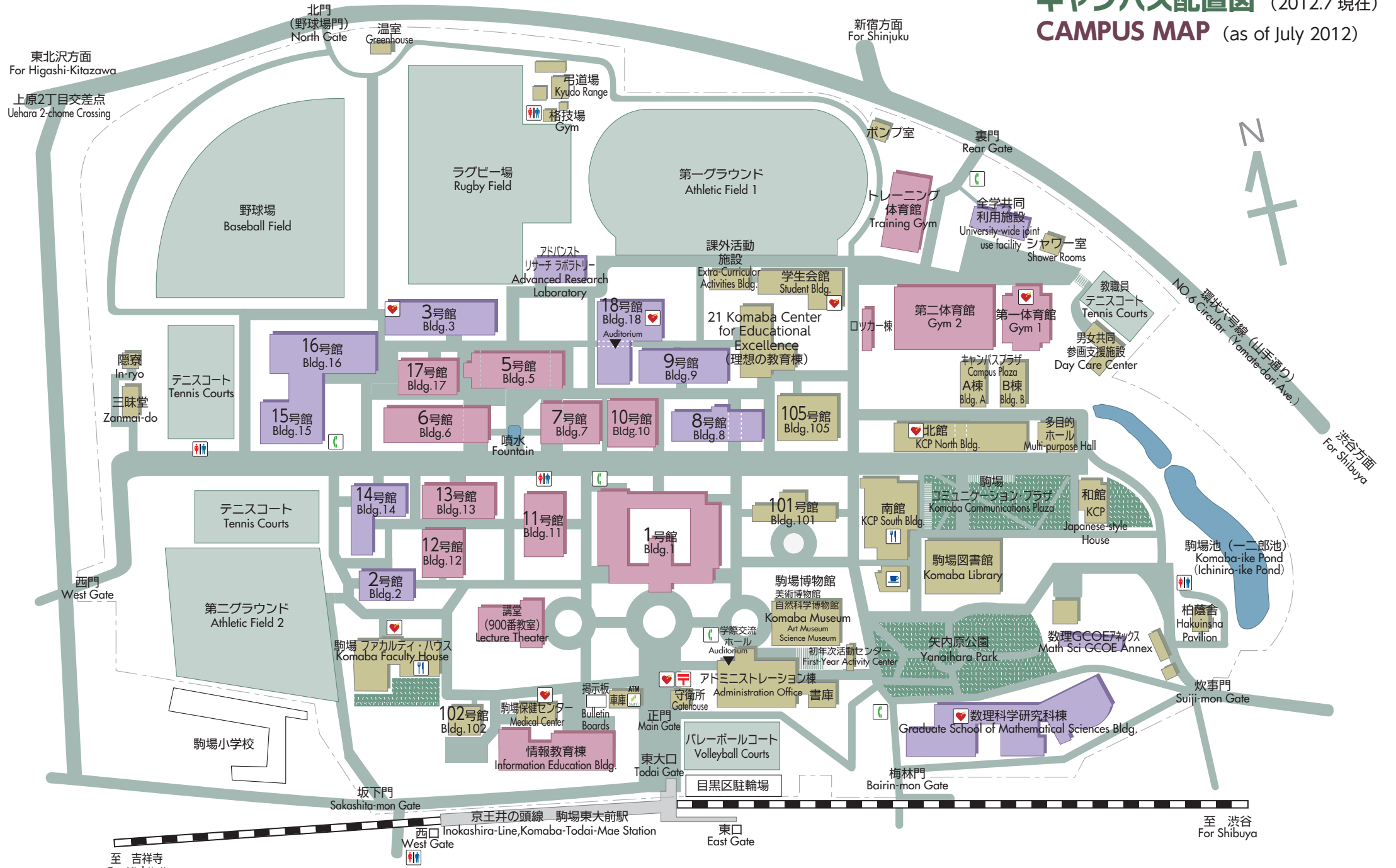


- ① Komaba I Campus: College of Arts and Sciences, Graduate School of Arts and Sciences, Graduate School of Mathematical Sciences
- ② Komaba II Campus: Institute of Industrial Sciences, Research Center for Advanced Science and Technology, Archaeological Excavation Unit, Komaba Open Laboratory, International Lodge (Komaba Lodge)
- ③ Hongo Campus: University Headquarters, General Library, Faculties and Graduate Schools, Hospital, Institutes (Earthquake Research, Social Science, Socio-Information and Communication Studies, Historiography, Molecular and Cellular Biosciences, Oriental Culture)
- ④ Kashiwa Campus: Graduate School of Frontier Sciences, Institute for Solid State Physics, Institute for Cosmic Ray Research, Atmosphere and Ocean Research Institute,

- Center for Research into Artifacts, Center for Engineering, Center for Spatial Information Science, Kavli Institute for the Physics and Mathematics of the Universe, International Lodge (Kashiwa Lodge, Kashiwanoha lodge)
- ⑤ Institute of Medical Science, International Lodge (Shirokane Lodge)
- ⑥ Koishikawa Botanical Gardens
- ⑦ Institute for Sustainable Agro-ecosystem Services
- ⑧ Secondary School attached to the Faculty of Education
- ⑨ Chiba Experimental Station of the Institute of Industrial Science
- ⑩ Toshima International Hall of Residence
- ⑪ Mitaka International Hall of Residence
- ⑫ Oiwake International Hall of Residence, Oiwake International Lodge
- ⑬ Kemigawa Athletic Ground
- ⑭ Boat House

キャンパス配置図 (2012.7 現在)

CAMPUS MAP (as of July 2012)



 ...自動体外式除細動器 (AED) 設置場所
 Locations of an Automated External Defibrillator

0 10 20 50 100 M

English Prospectus of the
Graduate School of Arts and Sciences
College of Arts and Sciences
The University of Tokyo, Komaba, 2012

Edited by the
Public Relations Committee

Published by the
Graduate School of Arts and Sciences
College of Arts and Sciences
The University of Tokyo

3-8-1 Komaba, Meguro-ku
Tokyo 153-8902
Phone 03-5454-6014
<http://www.c.u-tokyo.ac.jp>

Sobun Printing Co., Ltd.



Prospectus 2012 The University of Tokyo, Komaba
Graduate School of Arts and Sciences • College of Arts and Sciences