

The University of Tokyo, Komaba

Prospectus 2015-2016

The Komaba 'Forest'

In The Graduate School of Arts and Sciences / College of Arts and Sciences at The University of Tokyo, there are about 6,640 freshmen and sophomores in the junior undergraduate division, about 460 juniors and seniors in the senior division, and about 1,290 graduate students pursuing their masters and doctoral degrees. As the saying goes, “One cannot see the forest for the trees”: it is never easy to properly overview an organization on such a great scale. This brochure, “The University of Tokyo, Komaba --- Prospectus 2015-2016” is here to provide you with an opportunity to learn about the graduate school and the college mentioned above from multiple perspectives.

Just as diverse reforms have been taking place throughout The University of Tokyo corresponding to the constant changes occurring in present-day society, The Graduate School of Arts and Sciences and The College of Arts and Sciences are continuously evolving. However, the concept of those changes can be described as the growth of each tree, and the beauty of the forest as a whole whose fundamental base lies in liberal arts education will always be the same. It is our utmost and sincere hope that this brochure will serve as “a guide and the information board of the Forest of the Komaba Campus” for you.



Dean of the Graduate School of Arts and Sciences
and the College of Arts and Sciences
Dr. Keiichiro Ogawa

Prospectus 2015-2016 The University of Tokyo, Komaba

CONTENTS

Foreword	1
Origin and History	3
Chronology	8
Organization	10
Teaching and Instruction	11
Deans Past and Present	16
Degree Programs	17
International Exchange Programs	21
University-Wide Programs	23
Educational and Research Programs	24
Affiliated Centers and Initiatives	25
Facilities	26
Periodical Publications	27
Statistics	29
University Facilities around Tokyo	32
Campus Map	33

English Prospectus of the
Graduate School of Arts and Sciences / College of Arts and Sciences
The University of Tokyo, Komaba, 2015-2016

Edited by the Public Relations Committee

Published by the
Graduate School of Arts and Sciences / College of Arts and Sciences
The University of Tokyo

3-8-1 Komaba, Meguro-ku Tokyo 153-8902
Phone 03-5454-6014
<http://www.c.u-tokyo.ac.jp>

Sobun Printing Co., Ltd.

Cover photo : The Komaba 'Forest' photo by Yoshiko Shingi

Organization

The Komaba Campus of the University of Tokyo is home to the College of Arts and Sciences, the Graduate School of Arts and Sciences, the Graduate School of Mathematical Sciences, and a number of advanced research facilities and campus services. What is now the College of Arts and Sciences was founded on May 31, 1949, when the new University of Tokyo started under the present system. Unlike general education sections in other national universities throughout Japan, the College was established as an autonomous institution from the start. The guiding spirits behind this special independence were Tadao Yanaihara, the first Dean of the College, and his colleagues, who believed in an integrated approach to learning aimed at the education of “unbiased individuals with all-round knowledge” and at “fostering the spirit of a life-long quest for truth.” When most universities in Japan abolished their general education sections in the 1990s, the College of Arts and Sciences took a different course; it carried out a thorough reform of its curriculum and has maintained until today its tradition of providing general, “liberal arts” education to all those entering the university in their first two years (Junior Division). In October 2012, the Junior Division welcomed international students from different parts of the world into its newly established PEAK Program (Programs in English at Komaba), in which students may complete their undergraduate degrees entirely in English.

The Senior Division of the College of Arts and Sciences provides specialized education to students in their third and fourth years. It offers a unique, interdisciplinary, international and advanced curriculum that seeks to realize in a more developed form the ideal of the Junior Division, namely, the search for new knowledge from an international and global point of view that transcends the traditional barriers between disciplines. The Senior Division began with the establishment of the Department of Liberal Arts in 1951, which was followed by that of the Department of Pure and Applied Sciences in 1962, and has constantly been developing and reforming itself in response to the needs of modern society and the changing times. A thorough reform was carried out again in 2011, resulting in the reorganization of the Senior Division into three new departments. The new Department of Humanities and Social Sciences consists of three sections: Interdisciplinary Cultural Studies, Area Studies, and Social and International Relations. The new Department of Interdisciplinary Sciences, with four divisions in Science and Technology Studies, Geography and Design Scienc-



Building 1

◆ Origin and History ◆

es, Informatics, and Earth System and Energy Sciences, as well as a sub-program in Evolutionary Sciences, aims at the integration of the arts and the natural sciences. The new Department of Integrated Sciences comprises four divisions in Mathematical Natural Sciences, Matter and Materials Science, Integrated Life Sciences, and Cognitive and Behavioral Sciences, as well as a sub-program in Sports Sciences.

The College instituted its own Graduate Division of International and Interdisciplinary Studies in 1983. This consisted of four programs: Comparative Literature and Culture, Area Studies, International Relations, and Social Relations. Three more programs, Cultural Anthropology, Multi-Disciplinary Sciences, and Culture and Representation, were later added. The next phase of restructuring began with the creation of Language and Information Sciences (1993). In 1994-95, Multi-Disciplinary Sciences was expanded to embrace Life Sciences, Basic Science, and General Systems Studies. In 1996 the existing six programs in Humanities and Social Sciences were reorganized into three sections of Interdisciplinary Cultural Studies, Area Studies, and Advanced Social and International Studies, thus completing the restructuring of the College's graduate division (renamed the Graduate School of Arts and Sciences in 1996). Furthermore, the Graduate School of Mathematical Sciences was established on the Komaba Campus as an independent institution in 1992. A large number of the staff of this graduate school also teach in the Junior Division of the College of Arts and Sciences.



Building 101

The Graduate School of Arts and Sciences has, for many years, been producing graduates with the vision and broad base of advanced learning necessary for identifying and meeting the multifaceted challenges of the modern world. This tradition led, in April 2004, to the establishment of the Graduate Program on Human Security (HSP) with the cooperation of its five departments. In April 2012, with the participation of its four arts departments, the Graduate School launched a

new Graduate Program on Global Humanities (GHP), which aimed to tackle the problems of the modern world through an approach that would transcend the traditional boundaries between disciplines and regions. In October 2012, the Graduate Program on Global Society (GSP [liberal arts]) and the Graduate Program on Environmental Sciences (GPES [integrated liberal arts-sciences]), also began accepting students. Both of these programs allowed students to earn their degrees by following courses taught only in English. Other programs that have been inaugurated at the Graduate School of Arts and Sciences since 2005 include the Science Interpreter Training Program, aimed at the facilitation of communication between the

public and the science and technology community; the European Studies Program and the Japan-Germany Inter-Graduate School Program, both aimed at the implementation of interdisciplinary education and research on modern Europe. Furthermore, in 2013, the Integrated Human Sciences Program for Cultural Diversity (IHS) was launched in collaboration with the Graduate School of Interdisciplinary Information Studies.

A number of special centers have been established to support teaching and research at the College and the Graduate School. One of these recent developments is the Institute for Advanced Global Studies (IAGS), which was established in April 2010, incorporating the existing Center for Pacific and American Studies (CPAS) and Center for German and European Studies (DESK), as well as the three newly founded centers for African Studies, Sustainable Peace, and Sustainable Development. The IAGS was joined a year later in April 2011 by two more new centers, one dedicated to Asian Studies and the other to Middle Eastern Studies (UTCMS). The Komaba Organization for Educational Development (KOMED), established in 2005 to further improve undergraduate teaching in the College of Arts and Sciences, merged with the Center for Structuring Life Sciences to form the Komaba Organization for Educational Excellence (KOMEX) in April 2010.

In 2015, the internal organization was reorganized, and it will consist of the following seven divisions: 1) Division of Advanced Education in Science, 2) Division of Science Interpreter Training Program, 3) Division of Social Outreach, 4) Division of Active Learning and Teaching, 5) Division of International Cooperation, 6) Division of First-Year Education, and 7) Special Division of Environmental and Energy Science.

The history of the Komaba Campus has therefore been a tale of growth. When it started in 1949, the Junior Division had two sections for human sciences and two sections for natural sciences. Currently there are three sections for each branch, and the total enrollment in the Junior Division is 6,641, double what it was in 1949. There are 463 students in the Senior Division, and 1,289 Master's and Doctoral students in the Graduate School of Arts and Sciences. The number of full-time faculty members, including professors, associate professors, lecturers and research associates was 361 as of May 1, 2015, which is about 2.6 times as many as in the year of the establishment of the College.

Campus

The Komaba Campus has a long and fascinating history. The campus and its environs were formerly called the Komaba Meadows, the whole area having been set aside as hunting grounds for the ruling Tokugawa family from the time of the eighth Shogun Yoshimune (early 18th century). The estate was said to include a medicinal herb garden as well. The Meadows covered 50 hectares of land, extending over what is now Komaba Park. There is still a small spring on campus, reminding us of how the ancient Musashino plains must have looked.

◆ Origin and History ◆

In 1878, one decade after the Meiji Restoration, the Komaba School of Agriculture was established at the northwestern corner of the grounds, where the College now stands. This School was eventually incorporated into the Tokyo Imperial University, the predecessor of the University of Tokyo, as the Faculty of Agriculture in 1890. Some of the buildings of the school were destroyed by fire during World War II, and the others were all demolished later.

In 1935 the Faculty of Agriculture was transferred to grounds adjacent to the Hongo Campus, and its place was assumed by the Dai-ichi Kōtō Gakkō, the preeminent three-year preparatory school for admission into Imperial universities. At about the same time, new buildings were constructed at Komaba, following the architectural styles used for the Hongo Campus. When the Dai-ichi Kōtō Gakkō was incorporated into the postwar University of Tokyo, the Komaba Campus finally became the seat of the University's College of General Education, which was later renamed the College of Arts and Sciences.



Cherry trees surrounding the rugby field

The College was thus reborn from what was left of the war-damaged buildings of the Dai-ichi Kōtō Gakkō and some temporary structures built after World War II. In addition to renovating these buildings, the College also made great efforts to restore and expand the campus gardens. This is one of the reasons why the Komaba Campus boasts so many old trees, including some very rare ones. Many of the famous cherry trees on campus, including those adorning the edges of the Rugby Field, were planted after the war.

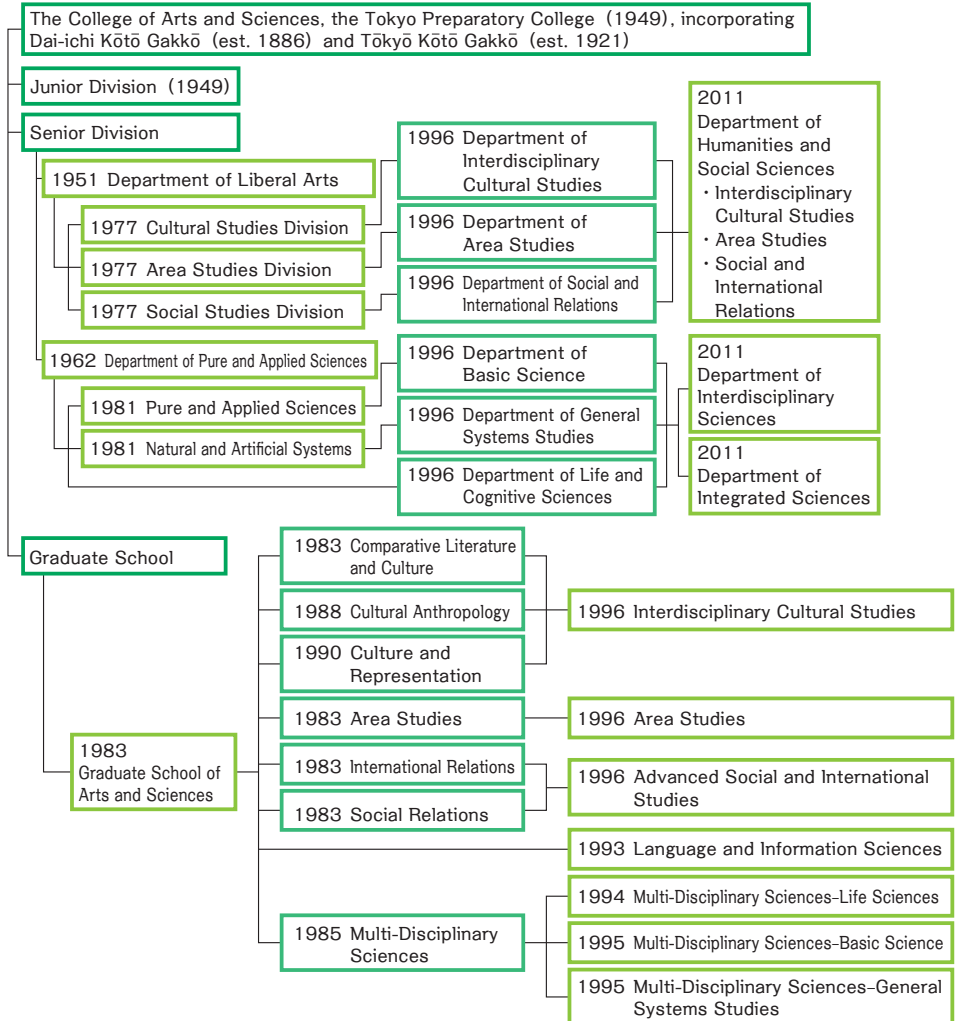
Beginning in the 1980s, major improvements were made to the research facilities with the construction of a number of new buildings mainly in the western half of campus. Since 2000, development has concentrated at the eastern end to improve the classroom facilities,

as well as facilities for extracurricular activities. The opening in 2006 of the Komaba Communication Plaza with its facilities for theatrical, musical and other extracurricular activities led to a major change in the image of the campus. The years 2011 to 2014 saw the completion of the 21 Komaba Center for Educational Excellence, which houses studio-type classrooms and laboratories with state-of-the-art equipment designed to facilitate active learning.



21 KOMCEE East

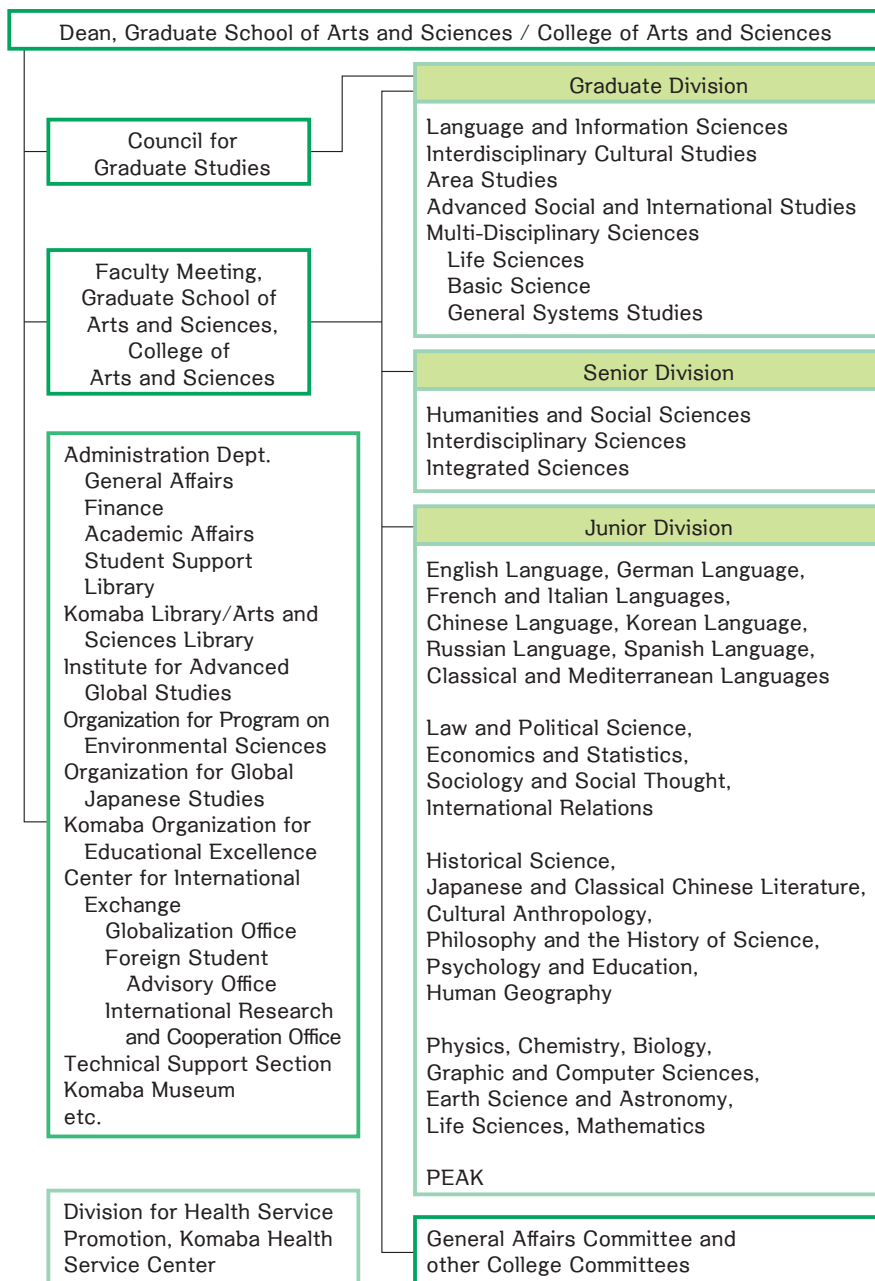
In 2015, Building 6 was renewed and has been reborn as Komaba International Building for Education and Research, and the internationalization of the Komaba campus has become even more dense.



◆ Chronology ◆

- 1949.5 College of General Education (Kyōyō Gakubu) established by amalgamating Dai-ichi Kōto Gakkō and Tokyo Kōtō Gakkō, to form part of the University of Tokyo (formerly Tokyo Imperial University) under the new National University Establishment Law.
- 1949.6 First matriculation of students at the College of General Education (1,804 entered including 9 women).
- 1950.3 Dai-ichi Kōtō Gakkō abolished.
- 1951.3 Tokyo Kōtō Gakkō abolished.
- 1951.4 Department of Liberal Arts (Kyōyō Gakka) established in the College.
- 1952.6 Students' Clinic opened.
- 1953.3 Graduation of the first class of students of the University under the new system, including 51 Bachelors of Liberal Arts, from the College.
- 1953.4 Student Counseling Center opened.
- 1962.4 Department of Pure and Applied Sciences (Kiso Kagakuka) established in the Senior Division of the College.
- 1964.4 Komaba Department of the Administration Bureau created (General Affairs, Academic Affairs, and Student Affairs Divisions).
- 1965.7 "Komaba-Tōdai-Mae" station on the Inokashira Line opened, replacing "Komaba" and "Tōdai-Mae" stations.
- 1967.1 Students' Clinic reorganized as the Komaba Branch of the newly established Health Service Center of the University.
- 1967.6 The Center for American Studies established.
- 1975.4 Library Division established.
- 1977.4 Reorganization of the Department of Liberal Arts.
- 1979.7 30th anniversary of the establishment of the College celebrated.
College of General Education: The First Thirty Years published.
- 1981.4 Reorganization of the Department of Pure and Applied Sciences:
Department of Natural and Artificial Systems established.
Finance Division established.
- 1983.4 Graduate Division of International and Interdisciplinary Studies (Sōgō Bunka Kenkyūka) established in the College.
College of General Education renamed College of Arts and Sciences.
- 1987.4 Komaba Branch of the Educational Computer Center opened.
- 1989.7 40th anniversary of the establishment of the College celebrated.
College of Arts and Sciences: The First Forty Years published.
- 1989.10 Academic Guidance Center opened.
- 1992.4 Graduate School of Mathematical Sciences established.
- 1993.4 Graduate Department of Language and Information Sciences established.
New curriculum for the Junior Division of the College implemented.
- 1993.6 Mitaka International Hall of Residence opened (Komaba Student Dormitory abolished).
- 1994.4 Graduate Department of Multi-Disciplinary Sciences-Life Sciences established.
Reorganization of Graduate Departments of Multi-Disciplinary Sciences-Basic Science and Multi-Disciplinary Sciences-General Systems Studies begun.
- 1995.4 Graduate Departments of Multi-Disciplinary Sciences-Basic Science and Multi-Disciplinary Sciences-General Systems Studies restructured.

- 1996.2 Graduate Division of International and Interdisciplinary Studies renamed Graduate School of Arts and Sciences.
- 1996.4 Graduate Programs of Comparative Literature and Culture, Cultural Anthropology, and Culture and Representation integrated and restructured as Interdisciplinary Cultural Studies. Graduate Programs of Social Relations and International Relations integrated and restructured as Advanced Social and International Studies. Graduate Program of Area Studies restructured into a department. Restructuring of the Graduate School of Arts and Sciences completed.
Undergraduate (Senior) Department of Liberal Arts reorganized into Department of Interdisciplinary Cultural Studies, Department of Area Studies, and Department of Social and International Relations. Department of Pure and Applied Sciences and Department of Natural and Artificial Systems reorganized into Department of Basic Science, Department of General Systems Studies, and Department of Life and Cognitive Sciences.
- 1999.4 Komaba Branch of the Educational Computer Center reorganized into the Information Technology Center.
- 2000.4 Center for American Studies reorganized into the Center for Pacific and American Studies.
- 2000.11 College of Arts and Sciences 50th Anniversary Symposium: "Exploring the Role of the University in the 21st Century."
- 2001.12 *Fifty Years of Komaba, 1949-2000* published.
- 2002.10 Opening of the new Komaba Library.
- 2004.4 The University of Tokyo reorganized as an incorporated national university.
- 2005.4 Komaba Organization for Educational Development established.
- 2006.4 New curriculum for the Junior Division of the College implemented.
The North Building of Komaba Communication Plaza opened.
- 2006.7 Administration offices restructured.
- 2006.10 The whole complex of Komaba Communication Plaza opened.
- 2009.3-10 Commemoration of the 60th anniversary of the establishment of the College of Arts and Sciences.
- 2010.4 Komaba Organization for Educational Excellence and Institute for Advanced Global Studies established.
- 2011.4 Senior Division of the College of Arts and Sciences restructured into Department of Humanities and Social Sciences, Department of Interdisciplinary Sciences, and Department of Integrated Sciences.
- 2011.5 21 Komaba Center for Educational Excellence West opened.
- 2012.4 Organization for Program on Environmental Sciences established.
- 2012.10 Undergraduate and graduate degree programs offered in English – Programs in English at Komaba (PEAK), Graduate Program on Environmental Sciences (GPES), and Graduate Program on Global Society (GSP) – established.
- 2013.4 Organization for Global Japanese Studies established.
- 2014.6 21 Komaba Center for Educational Excellence East opened.
- 2015.8 Komaba International Building for Education and Research opened.



Education at Komaba is provided at three different levels: the Junior Division, the Senior Division, and the Graduate School.

Junior Division

http://www.c.u-tokyo.ac.jp/eng_site/zenki

The College of Arts and Sciences consists of the Junior Division and the Senior Division. All undergraduate students of the University of Tokyo undertake their first two years of study (“Junior Division”) at the College of Arts and Sciences on the Komaba Campus. All students belong to one of six streams: Humanities and Social Sciences I through III or Natural Sciences I through III. The curriculum for each of these streams is directed mainly toward specialization in Senior Division undergraduate courses in the following Faculties.

Junior Division	Senior Division
Humanities and Social Sciences I	Faculties of Law, and Arts and Sciences
Humanities and Social Sciences II	Faculties of Economics, and Arts and Sciences
Humanities and Social Sciences III	Faculties of Letters, Education, and Arts and Sciences
Natural Sciences I	Faculties of Engineering, Science, Pharmaceutical Sciences, Agriculture, Medicine, and Arts and Sciences
Natural Sciences II	Faculties of Agriculture, Pharmaceutical Sciences, Science, Engineering, Medicine, and Arts and Sciences
Natural Sciences III	Faculty of Medicine

At the end of the third semester, majors are decided according to each student’s preferences and academic performance and departmental capacity. The great majority of students move on to one of the above Faculties, which are located largely on the Hongo Campus. The others pursue Senior Division courses on the Komaba Campus. The College’s Senior Division, Faculty of Arts and Sciences, accepts students from any of the six streams in the Junior Division. In 2008, a new admission system started in which there is greater flexibility for students in choosing their departments for senior study.

The curriculum in the Junior Division consists of Foundation Courses, Integrated Courses, and Thematic Courses. During their initial three semesters in the Junior Division, students study subjects included in these courses. In their fourth semester, students combine Junior Division courses and specialized courses, with appropriate shifts in emphasis prescribed by each Faculty or Department in the Senior Division.

In April, 2008, ALESS (Active Learning of English for Science Students) started as a required course for all science students in the core English program. The aim of the course is to develop the skills necessary to write a short scientific paper and to make an academic presentation in English. Classes have a maximum of 15 students and are taught in English by teachers who are either native speakers of English or have native-level English language skills. For all students studying humanities and social sciences, ALESA (Active Learning of English for Students of the Arts) started in April, 2013.

Starting in 2015, FLOW (Fluency-Oriented Workshop) has been provided for all undergraduate students as one of the mandatory English courses. The aim of FLOW classes is to train students to acquire logical and fluent English speaking skills.

Moreover, “Total Educational Reform at The University of Tokyo” has paid off, and since 2015, small-size classes have been promoted and level-based class formation has been officially launched. Among the foundation courses, along with “First year seminar (HS・NS students)”, advanced courses have been offered (seminar in social sciences, the humanities and natural sciences) which serve as conduits for foundation courses for the junior and senior divisions. Also, in thematic courses, courses titled “International Learning Workshops”, with a particular focus on nurturing international communication and global perspectives, have started.

The first year humanities seminar which is a required course for HS endeavors to shift the style of learning from the passive acquisition of knowledge, which students are used to through their pre-university education to an appropriate attitude for the world of academia where one is expected to become an active learner who formulates their own question, and engages independently in searching for the answer. With such a vision, the seminar aims to not only teach students to obtain basic academic skills but also to internalize academic methods of conducting research such as respecting the work done by previous researchers.

The first year science seminar which is a required course for NS strives to motivate students towards active learning, and the professors at Komaba who excel as top-level researchers in the world offer small-size class tutorials which closely correspond with their own specialties and interests, aiming to provide students with opportunities to obtain scientific skills through such academic experiences.

Senior Division (Specialized Education)

http://www.c.u-tokyo.ac.jp/eng_site/fas

The Senior Division at Komaba, the Faculty of Arts and Sciences, was reorganized into three departments in the academic year 2011. The primary goal of the Senior Division is to foster a broad understanding of the complex issues facing human society in the 21st century. It has been organized based on the assumption that in order to respond effectively to these diverse contemporary problems, students need to be able to discern and transcend existing systems of categorization. Constant attention to curriculum reform within the Senior Division therefore embodies an ongoing search for effective ways to combine a solid academic grounding with cutting-edge specialized education. As a small and highly selective educational unit, the Division is also able to make productive use of students’ input and creativity. From the tradition established at the time of its original establishment as the Department of Liberal Arts and the Department of Pure and Applied Sciences, Komaba’s Senior Division continues to produce widely respected graduates ready to contribute their creative intelli-

gence and problem-solving skills to society. While a significant number choose to pursue graduate studies, others pursue a career in civil service, in the corporate world, or in educational or research institutions.

Since 2015, a program for the senior division called “the Trilingual Program” has been running.

The Senior Division consists of the following departments.

Department of Humanities and Social Sciences

Interdisciplinary Cultural Studies

Cultural Anthropology; Culture and Representation; Comparative Literature and Arts; Contemporary Thought and Philosophy; Interdisciplinary Japanese Cultural Studies; Interdisciplinary Language Sciences; Studies on Language, Text and Culture

Area Studies

British Studies; French Studies; German Studies; Russian and East European Studies; Italian / Mediterranean Studies; North American Studies; Latin American Studies; Asian and Japanese Studies; Korean Studies

Social and International Relations

Interdisciplinary Social Sciences; International Relations

* Japan in East Asia

Department of Interdisciplinary Sciences

Science and Technology Studies; Geography and Design Sciences; Informatics; Earth System and Energy Sciences; Evolutionary Sciences

* Environmental Sciences

Department of Integrated Sciences

Mathematical Natural Sciences; Matter and Materials Science; Integrated Life Sciences; Cognitive and Behavioral Sciences; Sports Sciences

* = International programs offered in English



Short-Term Student Exchange Program (AIKOM)

<http://www.globalkomaba.c.u-tokyo.ac.jp/outbound/program/exchange/aikom/>

The AIKOM (Abroad In Komaba) Program is an undergraduate exchange program between the University of Tokyo and 20 partner universities in 15 countries. It is operated under a formal short-term exchange agreement, which stipulates mutual tuition waiver (whereby participating students pay full tuition to their home university), and credit transfer (whereby credits earned during the study year abroad and which fulfill stated requirements are recognized by the students' home universities). Applications are solicited from students in the Senior Division of the College (except for a few Departments) and students of the partner universities. The College now sends and receives more than 25 students each year.

A special curriculum is provided for AIKOM students at Komaba, which includes courses offered in English, such as Dynamics of Japanese Cultural History, Aspects of Japanese Society, Specialized Courses on Japanese Studies, Japanese Language, and Directed Independent Study. All of these courses, except for the Japanese Language Courses and Directed Independent Study, are open to regular students in the Senior Division of the College. AIKOM students who have fulfilled requirements for the special curriculum are also free to take regular courses in the College's Senior Division according to their academic interests and Japanese language proficiency.

The partner universities are as follows:

Asia: Peking University, Nanjing University, and Fudan University (China), Gadjah Mada University (Indonesia), University of Malaya (Malaysia), University of the Philippines (Philippines), Vietnam National University, Hanoi (Vietnam), National University of Singapore (Singapore)

Oceania: University of Sydney (Australia), University of Auckland and University of Otago (New Zealand)

North and South America: Swarthmore College, University of Washington and Johns Hopkins University (USA), Pontifical Catholic University of Chile (Chile)

Europe: Universités Associées de Grenoble (France), University of Warwick (UK), University of Geneva (Switzerland), University of Roma "La Sapienza" (Italy), and Trinity College Dublin, University of Dublin (Ireland)

Graduate School of Arts and Sciences

http://www.c.u-tokyo.ac.jp/eng_site/graduate

The Graduate School of Arts and Sciences was established with the primary objective of providing opportunities for students to deepen the knowledge acquired during their undergraduate years. Reflecting its interdisciplinary and international spirit, the Graduate School is committed to train not only scholars in specialized academic fields, but also professionals whose expertise will enable them to make great social contributions in a variety of practical fields.

In the list of departments below, those in parentheses indicate shared inter-departmental specializations.

Language and Information Sciences	Foundations of Scientific Linguistics; Language and Information Analysis; International Communication; Text Analysis; Language Acquisition; Japan and Korea Language Ecology	
Interdisciplinary Cultural Studies	Culture Dynamics; Culture and Representation; Cultural Anthropology; Cultural Complexity; Comparative Literature and Culture; (Comparative Ethnography)	
Area Studies	Multidimensional Analysis of World Structure; European and Russian Area Studies; Mediterranean and Islamic Area Studies; North, Central and South American Area Studies; Asia Pacific Area Studies; (Indian Ocean Area Studies; Pacific and American Area Studies)	
Advanced Social and International Studies	International Cooperation; International Relations; Public Policy; Interdisciplinary Studies in Social Sciences; (Comparative Politics)	
Multi-Disciplinary Sciences	Life Sciences	Biological Responses to Environmental Information; Bio-informatics; Bio-functionality; Exercise Adaptability; Cognitive and Behavioral Sciences; (Informatics and Media Technology)
	Basic Science	Foundations of Science and Technology; Structures in Natural Sciences; Theory in Complex Systems; Analysis of Material Functionality; Material Measurementation; Material Design
	General Systems Studies	Systems Theory; Information Systems; Global Systems; Complex Systems Planning
Graduate Programs Offered Entirely in English	Graduate Program on Environmental Sciences Graduate Program on Global Society	
Cross-Departmental Programs	Graduate Program on Human Security; European Studies Program; Japanese-German International Joint Graduate School; Global Humanities Program	
University-wide Programs	Science Interpreter Training Program; Integrated Human Sciences Program for Cultural Diversity	

◆ Teaching and Instruction ◆

Sponsored Programs

The following programs have been made possible by external benefactors:

Programs	Benefactors
Sultan Qaboos Chair in Middle East Studies	Sultanate of Oman (April 2011-)
Uehiro Research Division for Philosophy of Co-Existence	The Uehiro Foundation on Ethics and Education (May 2012-March 2017)

◆ Deans Past and Present ◆

1949. 5.31 – Tadao YANAIHARA	1982. 1. 1 – Nagayo HONMA
1951.12.14 – *Isoji ASŌ	1984. 1. 1 – Shōichirō KOIDE
1951.12.21 – Isoji ASŌ	1985. 1.10 – *Hideo MŌRI
1952.12.22 – Teiji TAKAGI	1985. 2.16 – Akira TAKEDA
1954. 3.31 – Naoshirō TSUJI	1987. 2.16 – Hideo MŌRI
1958. 4. 1 – Atsushi KAWAGUCHI	1989. 2.16 – Kōichi AOYAGI
1960. 4. 1 – Natsuo SHUMUTA	1991. 2.16 – Yoshiya HARADA
1963. 4. 1 – Shigeru AIHARA	1993. 2.16 – Shigehiko HASUMI
1966. 4. 1 – Akio ABE	1995. 2.16 – Munetake ICHIMURA
1968. 4. 1 – Mokichirō NOGAMI	1997. 2.16 – Wataru ŌMORI
1968.11.14 – Jirō TAMURA	1999. 2.16 – Setsurō ASANO
1969. 2.14 – *Sachio TAKAGI	2001. 2.16 – Motoo FURUTA
1969. 2.20 – Tadashi TAKAHASHI	2003. 2.16 – Makoto ASASHIMA
1969. 5.26 – Tasuku HARA	2005. 2.16 – Yōichi KIBATA
1971. 4. 1 – Hajime YAMASHITA	2007. 2.16 – Norimichi KOJIMA
1972. 3.14 – Sachio TAKAGI	2009. 2.16 – Susumu YAMAKAGE
1974. 3.14 – Hiroshi KOYAMA	2011. 2.16 – Toshikazu HASEGAWA
1976. 3.14 – Shōzō ŌMORI	2013. 2.16 – Yōjirō ISHII
1978. 1. 1 – Motoo KAJI	2015. 4. 1 – Keiichiro OGAWA
1980. 1. 1 – Hiroshi ISODA	* (Acting Dean)

Graduate Program on Human Security (HSP)

<http://hsp.c.u-tokyo.ac.jp/?lang=en>

Human Security is a new concept focusing on the development of a more humane global society for the 21st century. In order to nurture “human assets” who will make innovative contributions in this area, the Graduate Program on Human Security (HSP) was launched in April 2004. The HSP offers Master’s and Doctoral courses based on close coordination among the five departments in the Graduate School of Arts and Sciences. Each year around 16 students are accepted into the Master’s course and 4 students into the Doctoral course. These students receive M.A. and Ph.D. degrees in Human Security Studies when they complete the program.

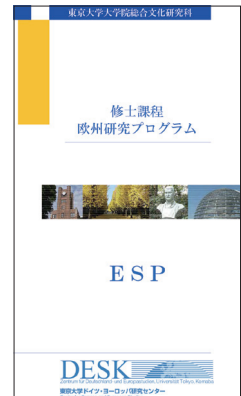
The HSP holds a variety of seminars and symposiums throughout the year with practitioners as well as researchers in the field of human security.



European Studies Program (ESP)

http://www.desk.c.u-tokyo.ac.jp/e/education_esp.html

The ESP is a Master’s-level program whose aim is to cultivate specialists in European Studies. In the program, students acquire the basic knowledge and methodologies of European Studies through its core courses, including Methodologies of European Studies, Supervised Readings and the European Summer Academy (ESA), which is held for 2 weeks in Germany. ESP students obtain an MA in European Studies by submitting a thesis on a relevant topic and successfully completing the curriculum. After graduation, the students are expected to be instrumental in acting as a bridge between Europe and Japan.



Japanese-German International Joint Graduate School (IGK)

<http://igk.c.u-tokyo.ac.jp/>

The IGK is a program for the promotion of joint research and education conducted by the University of Tokyo and the University of Halle in Germany. This program was started in 2007 with the support of the Japan Society for the Promotion of Science and the German Research Foundation. Every year there are exchanges of graduate students and professors for joint research and education. Furthermore we hold joint classes during the semester and semi-annual joint seminars in Halle and Komaba. In addition, we are conducting an international joint research project concerning the changing modes of civil society from a German-Japanese comparative perspective.



Global Humanities Program (GHP)

<http://ghp.c.u-tokyo.ac.jp/en/>

We are living in a complicated age in which the progress of globalization is leading to growing global unification. At the same time this process of globalization also reveals the pluralized nature of global society, characterized by differences in ethnicity, gender, social class and so on. In times like these the ability to understand and to communicate with others in an interactive way while positioning ourselves against the global background is of paramount importance. The goal of the Graduate Program on Global Humanities is to foster this kind of ability by educating people who can contribute to the realization of a pluralist global society.



PEAK (Programs in English at Komaba)<http://peak.c.u-tokyo.ac.jp/>

“Programs in English at Komaba” (PEAK) is the collective name for the two English-medium programs launched at Komaba in October 2012, the “International Program on Japan in East Asia” (JEA) and the “International Program on Environmental Sciences” (ES). Both of these programs are interdisciplinary degree programs consisting of two years of liberal arts study in the Junior Division and two years of specialisation in the Senior Division. All of the courses available as part of these programs are delivered entirely in English. There is no Japanese language requirement to join either of the programs, but studying Japanese is an important part of the program and Japanese language classes are mandatory during the junior division for both programs.

**Graduate Program on Environmental Sciences (GPES)**<http://gps.c.u-tokyo.ac.jp/>

The Organization for Programs on Environmental Sciences was established in May 2012 in order to conduct the Program on Environmental Sciences, which consists of an undergraduate course and advanced level degree program (offered at both Masters and Ph.D. level). All the lectures in the graduate program are delivered entirely in English by about 60 professors and associate professors of this organization, who are from a variety of departments in the university. The goal of this program is to provide students with a broad-based, inter- and multidisciplinary understanding of the complex topic of environmental sciences. To achieve this, the organization is designed to cover the following six basic areas in environmental sciences: (1) Environmental Principles, (2) Management and Policy, (3) Measurement and Evaluation, (4) Materials, Systems and Dynamics, (5) Energy and Resources, (6) Health and Security. Students develop a unique set of skills which will enable them to analyze, critique, propose and define environmental policy from economic, cultural and political viewpoints. Professional training in GPES is based on a platform of basic science and technology, which covers aspects from basic physics and chemistry to environmental processes such as ecological systems and methods for measuring global material circulation. Students choose their area of specialization from a wide range of relevant fields including natural and agricultural sciences, industrial technologies, and social sciences including economics, politics and other related disciplines.

Graduate Program on Global Society (GSP)

<http://gsp.c.u-tokyo.ac.jp/>

The Graduate School of Arts and Sciences launched the Graduate Program on Global Society (GSP) in the fall of 2012.

The program focuses on the changing political, social, ecological, cultural and ethical dimensions of the human condition in the age of globalization. It seeks to cultivate in its students the type of problem-solving leadership that is required in the new, multipolar world. The program offers a curriculum based on critical thinking, practical action, and creative spirit that extends beyond the disciplinary borders of the humanities and social sciences so as to better prepare the next generation to both meet the challenges and to take advantage of the possibilities of our changing global society. It aims to cultivate in its students the qualities of leadership necessary to manage the global issues we confront today and to adapt to those that we will face in the future. The working language of the program is English. Students from all over the world are welcome to participate in the program and work toward their M.A. or Ph.D. degrees in Global Studies.



Graduate Program on
Global Society



TŌDAI Liberal Arts Program (LAP)<http://www.lap.c.u-tokyo.ac.jp/en/>

It is the mission of LAP to pursue the possibility of a new kind of liberal arts education in Asia by transmitting our university's lectures throughout Asia and by encouraging academic exchanges between Japanese and Asian universities. So far we have delivered this new kind of liberal arts education, which combines the humanities and sciences, primarily to Chinese universities. Nanjing University is our main partner and for 7 years we have sent about 10 professors every year in March to conduct intensive seminars and lectures. Since 2010, we have begun student exchange programs twice per year in March and November, having both Japanese and Chinese students take the same lectures and collaborate on the subjects dealt with in lectures. In 2012, we started a new academic exchange program with Melbourne University by sending 2 professors and giving lectures there. From 2013 to 2017, by a donation from ZENSHO HOLDINGS CO., Ltd., we have been cooperating with Nanjing University on the Summer Chinese Language Course. 20 students participate in this every year. During this period, the student exchange programs mentioned above are also supported by the same donation.



TODAI Liberal Arts Program
東京大学教養教育創新工程

East Asia Liberal Arts Initiative (EALAI)<http://www.ealai.c.u-tokyo.ac.jp/english/>

Originally launched in 2005, the East Asia Liberal Arts Initiative (EALAI) conducts educational and academic exchanges with institutions of higher education both within East Asia and elsewhere, with the aim of establishing new models of liberal arts education suited to the cultural and social needs of the East Asian region. Since its establishment, EALAI has been playing a central role in the organization of the annual BESETOHA Forum, a forum for sharing the latest academic and educational achievements between Peking University, Seoul National University, the University of Tokyo, and the Vietnam National University, Hanoi. New innovative educational programs implemented by EALAI include the joint e-lecture series on Asian cultures and economies with SNU and VNU-Hanoi, which began in 2008, and the Zensho-UT Japan Studies Program in VNU-Hanoi, launched in 2012.



Short-Term Student Exchange Program (AIKOM)

<http://www.globalkomaba.c.u-tokyo.ac.jp/outbound/program/exchange/aikom/>

The AIKOM (Abroad in Komaba) Program is an undergraduate exchange program between the College of Arts and Sciences and 20 partner universities in 15 countries. It is operated under a formal short-term exchange agreement that stipulates mutual tuition waivers (whereby participating students pay full tuition to their home institutions), and credit transfer (whereby credits earned during the study year abroad are recognized by the students' home institutions). Applications are solicited from students in the Senior Division of the College (except for a few Departments) and students of the partner institutions. The College now sends and receives more than 25 students each year.

A special curriculum is provided for incoming exchange students at Komaba, which includes courses offered in English on Japanese culture and society and Japanese Language courses.



Science Interpreter Training Program

<http://science-interpreter.c.u-tokyo.ac.jp/en/>

This is a university-wide ancillary program for selected graduate students with the aim of nurturing leading figures who can bridge science/technology and society. The curriculum of at least one year and a half offers programs for students to acquire varied and critical ways of thinking and to master writing, presenting and interviewing skills, in cooperation with distinguished instructors both on- and off-campus. It focuses not only on “how to communicate,” but also on “what to communicate.” The graduates of this program are working actively in a wide range of fields, including research and development, science and technology policy, education, and journalism. In 2012, we extended the graduate program to third and fourth-year undergraduate students as well as some seminars for first and second-year students.



Integrated Human Sciences Program for Cultural Diversity (IHS)

<http://ihs.c.u-tokyo.ac.jp/en/>

The Integrated Human Science Program for Cultural Diversity (IHS) is a graduate program selected as a program for leading graduate schools by the Japan Society for the Promotion of Science (JSPS) in the academic year 2013. The Graduate Schools of Arts and Sciences and of Interdisciplinary Information Studies are in charge of running this program. We aim to educate the leaders of the next generation who will help build the multicultural society of the future through a coherent five-year Doctoral program that is interdisciplinary and covers a combination of different fields of study. Integrated Human Sciences is a new form of learning that will equip the future leaders of a multicultural society with a broad perspective and the ability to apply their high-level academic knowledge and expertise to the creation of new values. The program aims to produce the leaders of the next generation who will utilize the knowledge and skills gained through the study of Integrated Human Sciences to solve the problems facing the multicultural societies of the 21st century.



The University of Tokyo
Integrated Human Sciences Program
for Cultural Diversity

Institute for Advanced Global Studies (IAGS)

<http://www.c.u-tokyo.ac.jp/info/research/organization/iags/index.html> (in Japanese)

Center for Pacific and American Studies (CPAS)

<http://www.cpas.c.u-tokyo.ac.jp/indexe.html>

Deutschland- und Europastudien in Komaba (DESK)

<http://www.desk.c.u-tokyo.ac.jp/e/index.html>

European Studies Program

http://www.desk.c.u-tokyo.ac.jp/e/education_esp.html

Internationales Graduiertenkolleg (IGK)

<http://igk.c.u-tokyo.ac.jp/> (in Japanese)

Center for African Studies

<http://www.c.u-tokyo.ac.jp/info/research/organization/iags/africa/> (in Japanese)

Research Center for Sustainable Peace

<http://www.c.u-tokyo.ac.jp/info/research/organization/iags/peace/> (in Japanese)

Research Center for Sustainable Development

<http://www.c.u-tokyo.ac.jp/info/research/organization/iags/development/> (in Japanese)

The University of Tokyo Center for Middle Eastern Studies (UTCMES)

<http://park.itc.u-tokyo.ac.jp/UTCMES/en/>

The Research Center for Asian Studies

http://www.c.u-tokyo.ac.jp/eng_site/info/research/organization/iags/asia/

Research Division for the Mediterranean Areas

Organization for Graduate Program on Environmental Sciences

<http://gpes.c.u-tokyo.ac.jp/introduction/>

Organization for Global Japanese Studies

http://www.c.u-tokyo.ac.jp/eng_site/info/research/organization/ijrem/

Komaba Organization for Educational Excellence (KOMEX)

http://www.c.u-tokyo.ac.jp/eng_site/info/research/organization/komex/

Tōdai Liberal Arts Program (LAP)

<http://www.lap.c.u-tokyo.ac.jp/en/>

**Research Center for Complex Systems
Biology**

<http://rcis.c.u-tokyo.ac.jp/index.html> (in Japanese)

Center for Evolutionary Cognitive Sciences

<http://ecs.c.u-tokyo.ac.jp/> (in Japanese)

East Asia Liberal Arts Initiative (EALAI)

<http://www.ealai.c.u-tokyo.ac.jp/english/>

**The University of Tokyo Center for
Philosophy (UTCP)**

http://utcp.c.u-tokyo.ac.jp/index_en.php



MRI installed at
Center for Evolutionary Cognitive Sciences

Center for Global Communication Strategies (CGCS)

<http://www.cgcs.c.u-tokyo.ac.jp/index.html>

**Active Learning of English for Science Students (ALESS)
Active Learning of English for Students of the Arts (ALESA)**

http://ale.c.u-tokyo.ac.jp/ale_web/index.php/ja/

Trilingual Program (TLP)

<http://www.c.u-tokyo.ac.jp/info/academics/zenki/tlp/index.html> (Junior Division, in Japanese)

<http://www.c.u-tokyo.ac.jp/info/academics/fas/tlp/index.html> (Senior Division, in Japanese)

Center for International Exchange

The Center for International Exchange promotes globalization within Komaba Campus by offering support to international students and advice to students interested in study abroad. It also plans activities to encourage exchange among students of various national and cultural backgrounds as well as engaging in promotional outreach. The Center is comprised of the International Students' Advisory Room (Building 101), the International Research and Cooperation Office (Building 101), and the Globalization Office (21 KOMCEE West). It also collaborates with the Komaba International Office and International Support Office.

Globalization Office

http://www.globalkomaba.c.u-tokyo.ac.jp/en/people_resources/International_Offices/Globalization_Office/index.html

International Students' Advisory Room

http://www.globalkomaba.c.u-tokyo.ac.jp/en/people_resources/International_Offices/international.html

International Research and Cooperation Office

http://www.globalkomaba.c.u-tokyo.ac.jp/en/people_resources/International_Offices/office.html

International Student Section

http://www.globalkomaba.c.u-tokyo.ac.jp/en/people_resources/International_Offices/section.html

International Center Komaba Office

http://www.globalkomaba.c.u-tokyo.ac.jp/en/people_resources/International_Offices/newfolder/index.html



2015 First Lunch Time Lecture by an ex-AIKOM student who now works at the Indonesian Embassy in Tokyo

Komaba Library/Arts and Sciences Library

http://lib.c.u-tokyo.ac.jp/index_e.html

The Komaba Museum

http://museum.c.u-tokyo.ac.jp/guide_e.html

Komaba Student Counseling Center (Bldg. 1)

http://www.c.u-tokyo.ac.jp/eng_site/consultation/life/

Academic Guidance Center (Bldg. 1)

http://www.c.u-tokyo.ac.jp/eng_site/info/facilities/forconsultation

Information Education Complex & Information Technology Center

<http://www.ecc.u-tokyo.ac.jp/ENGLISH/index-e.html>

Health Promotion Division, Health Service Center, Komaba Branch

<http://www.hc.u-tokyo.ac.jp/en/index.html>

Technical Support Section (Bldg. 16)

http://www.c.u-tokyo.ac.jp/eng_site/info/facilities/forexperiment/

Komaba Office of University Research Administration (Bldg. 101)**Harassment Counseling Center (Bldg. 101)**

<http://har.u-tokyo.ac.jp/en/>

Disability Services Office (Bldg. 8)

<http://ds.adm.u-tokyo.ac.jp/en/>

Advanced Research Laboratory

http://www.c.u-tokyo.ac.jp/eng_site/info/facilities/forexperiment/

Komaba Faculty House

http://www.c.u-tokyo.ac.jp/eng_site/info/facilities/io/

Day Care Center

http://www.c.u-tokyo.ac.jp/eng_site/info/facilities/nursery/

Mitaka International Hall of Residence

<http://www.u-tokyo.ac.jp/en/administration/housing-office/housing/shukusha/mitakakokusai.html>

①



②



③



① LANGUAGE, INFORMATION, TEXT

Gengo Jōhō Tekusuto, edited by the Graduate Department of Language and Information Sciences.

② LANGUAGE AND INFORMATION SCIENCES

Gengo Jōhō Kagaku, edited by the Graduate Department of Language and Information Sciences.

③ INTERDISCIPLINARY CULTURAL STUDIES

Edited by the Department of Interdisciplinary Cultural Studies, Graduate School of Arts and Sciences.

④ ODYSSEUS: THE PROCEEDINGS OF THE GRADUATE DEPARTMENT OF AREA STUDIES

Odysseus, edited by the Graduate Department of Area Studies.

⑤ THE KOMABA JOURNAL OF AREA STUDIES

Nenpō Chiiki Bunka Kenkyū, edited by the Graduate Department of Area Studies.

⑥ ADVANCED SOCIAL AND INTERNATIONAL STUDIES

Kokusai Shakai Kagaku, edited by the Graduate Department of Advanced Social and International Studies.

⑦ FRONTIÈRE

Sōgō-bunka-kenkyū-ka Kōiki-kagaku-senkō Nenpō, edited by the Graduate Department of Multi-Disciplinary Sciences.

⑧ THE ARCHIVE FOR PHILOSOPHY AND THE HISTORY OF SCIENCE

Tetsugaku Kagaku-shi Ronsō, edited by The Archive for Philosophy and the History of Science Editorial Committee.

⑨ THE PROCEEDINGS OF THE FOREIGN LANGUAGE SECTIONS

Gaikokugo Kenkyū Kiyo, edited by the Foreign Language Committee.

⑩ KOMABA STUDIES IN HUMAN GEOGRAPHY

Tokyo Daigaku Jinbun-chirigaku Kenkyū, edited by the Department of Human Geography.

⑪ STUDIES ON INTERNATIONAL RELATIONS

Kokusai-kankei-ron Kenkyū, edited by the Association of International Relations Studies.

⑫ KOMABA JOURNAL OF ENGLISH EDUCATION (KJEE)

Edited by the Department of English Language, College of Arts and Sciences.

④



⑤



⑥



⑦



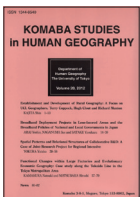
⑧



⑨



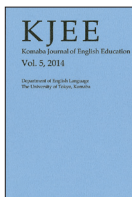
⑩



⑪



⑫



13



13 THE THESIS COLLECTION OF THE SCIENCE INTERPRETER TRAINING PROGRAM

Published yearly.

14



14 THE BULLETIN OF THE KOMABA STUDENT COUNSELING CENTER

Komaba Gakuseisōdanjo Kiyō, edited by Komaba Student Counseling Center.

15



15 KYŌYŌ GAKUBU HŌ (The Newsletter of the College of Arts and Sciences)

<http://www.c.u-tokyo.ac.jp/info/about/booklet-gazette/bulletin/>

Edited by the Gakubū-hō Committee.

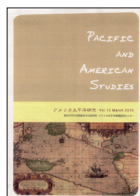
16



16 KOMABA 20XX (The Annual Report on Staff Achievements)

<http://www.c.u-tokyo.ac.jp/info/about/annualreport/>
Edited by the Public Relations Committee.

17



Institute for Advanced Global Studies
17 PACIFIC AND AMERICAN STUDIES

Amerika Taiheiyō Kenkyū, edited by the *Pacific and American Studies* Editorial Committee.

18



18 CPAS NEWSLETTER

Edited by the Center for Pacific and American Studies.

19



19 EUROPEAN STUDIES

http://www.desk.c.u-tokyo.ac.jp/j/books_bk_es.html
Yōroppa Kenkyū, edited by the Center for German and European Studies (DESK)

20



20 DESK Newsletter (Electronic version)

http://www.desk.c.u-tokyo.ac.jp/j/books_bk_nl.html
Edited by the Center for German and European Studies (DESK)

21



21 UTCMES Newsletter

<http://park.itc.u-tokyo.ac.jp/UTCMS/publish-cat/letter>
Edited by the Center for Middle Eastern Studies (UTCMS)

■ **Enrollment (Graduate)**

Department	Master's	Doctoral	Total
Language and Information Sciences	57	128	185
Interdisciplinary Cultural Studies	73	126	199
Area Studies	77	152	229
Advanced Social and International Studies	81	123	204
Multi-Disciplinary Sciences	253	219	472
Total	541	748	1,289

■ **Research Students**

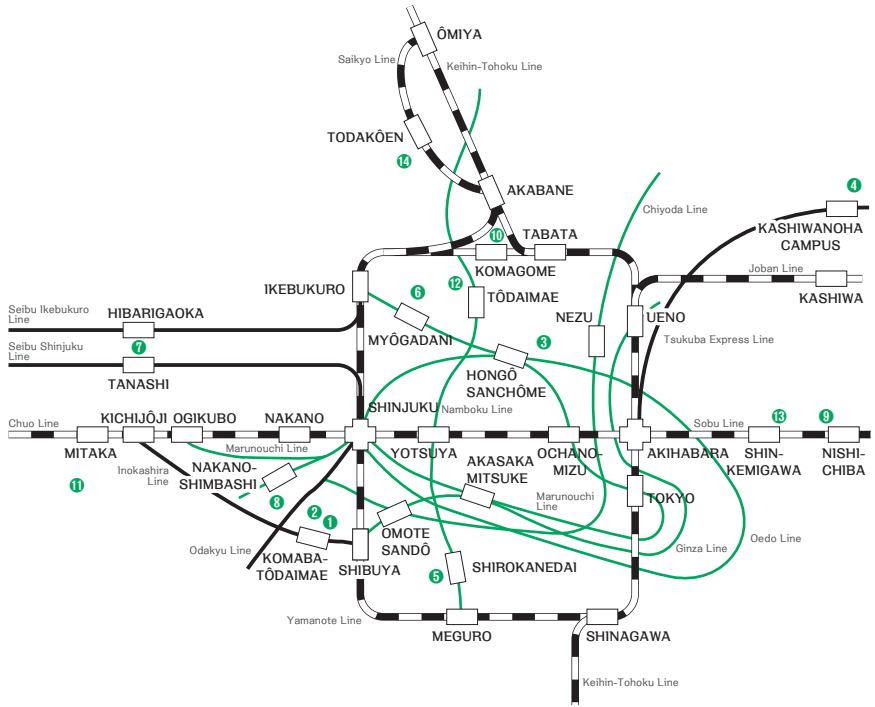
Undergraduate Research Students	6
Undergraduate Auditors	0
Short-term Undergraduate Exchange Students	26
Special Auditors	20
Graduate Research Students	9
Graduate Foreign Research Students	43
Total	104



■ International Students

	Under-graduate	Graduate		Under-graduate Research Students	Short-term Exchange Students	Graduate Foreign Research Students	Graduate Research Students	Graduate Special Research Students	Special Auditors	Total
		Master's	Doctoral							
India	1							1		2
Indonesia		1			3					4
South Korea	(7) 44	12	54		1	7	4			(7) 122
Cambodia			1							1
Singapore	(8) 14	1	1		1					(8) 17
Thailand	10		1							11
Taiwan	(1) 5	6	11		1				2	(1) 25
China	(6) 48	44	34	3	4	25		5		(6) 163
Inner Mongolia			2							2
Hong Kong	2									2
Nepal	1									1
Bangladesh	1		1							2
Philippines			1		2					3
Vietnam	(1) 5				1				3	(1) 9
Malaysia	2	2			2	1				7
Myanmar			1							1
Mongolia	2		1							3
Australia	(2) 6	1	1			1				(2) 9
New Zealand	2	1								3
Iran		1								1
Turkey			1							1
Colombia						1				1
Chile		1								1
Brazil	1	1	2							4
Peru			2							2
Mexico						1				1
U.S.A.		4	2		1	1		2		10
Canada			1			1				2
Ireland					1					1
U.K.	1	2	1		2	1				7
Italy				1	2					3
Ukraine		1	2							3
Uzbekistan						1				1
Austria			1							1
Netherlands		1								1
Switzerland		1	1							2
Sweden					1					1
Tajikistan		1								1
Denmark			1							1
Germany			2		1			2	2	7
Finland					1					1
France	2	1	2			2		1	2	10
Belarus	1									1
Belgium			1							1
Poland	(1) 1		2							(1) 3
Portugal		1								1
Luxembourg			1							1
Romania	1		1							2
Russia	2	1				1				4
Total	(26) 152	84	132	4	24	43	4	11	9	(26) 463

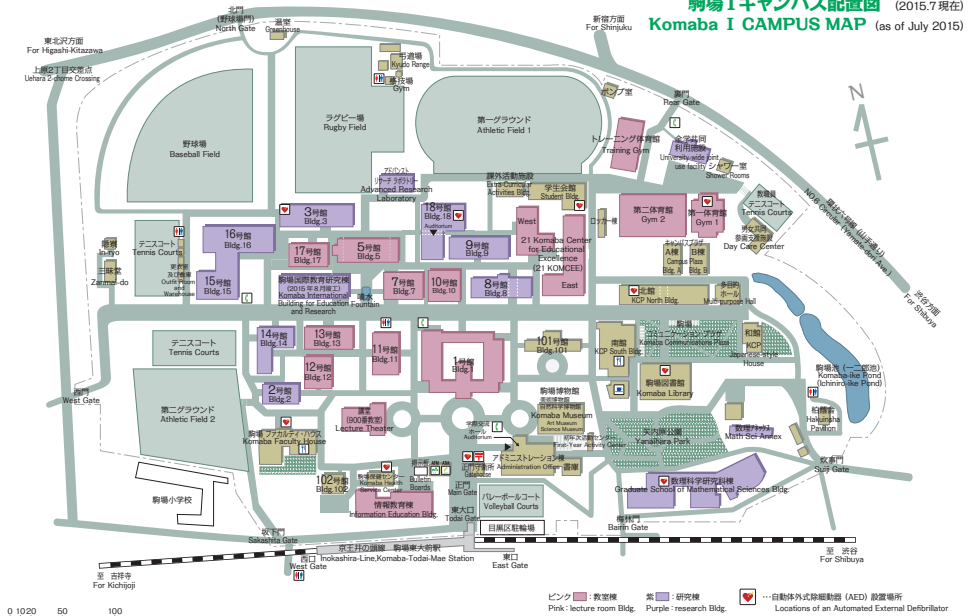
Numbers in parentheses indicate students in the Senior Division.



- 1 Komaba I Campus: College of Arts and Sciences, Graduate School of Arts and Sciences, Graduate School of Mathematical Sciences
- 2 Komaba II Campus: Institute of Industrial Sciences, Research Center for Advanced Science and Technology, Archaeological Excavation Unit, Komaba Open Laboratory, International Lodge (Komaba Lodge)
- 3 Hongo Campus: University Headquarters, General Library, Faculties and Graduate Schools, Hospital, Institutes (Earthquake Research, Social Science, Historiography, Molecular and Cellular Biosciences, Oriental Culture)
- 4 Kashiwa Campus: Graduate School of Frontier Sciences, Institute for Solid State Physics, Institute for Cosmic Ray Research, Atmosphere and Ocean Research Institute, Center for Research into Artifacts, Center for Engineering, Center for Spatial Information Science, Kavli Institute for the Physics and Mathematics of the Universe, International Lodge (Kashiwa Lodge, Kashiwanoha Lodge)
- 5 Shirokanedai Campus: Institute of Medical Science, International Lodge (Shirokane Lodge)
- 6 Koishikawa Botanical Garden
- 7 Institute for Sustainable Agro-ecosystem Services
- 8 Nakano Campus: Secondary School attached to the Faculty of Education
- 9 Chiba Experimental Station of the Institute of Industrial Science
- 10 Toshima International Hall of Residence
- 11 Mitaka International Hall of Residence
- 12 Oiwake International Hall of Residence, Oiwake International Lodge
- 13 Kemigawa Athletic Ground
- 14 Boat House

<http://www.u-tokyo.ac.jp/en/about/access.html>

駒場 I キャンパス配置図 (2015.7 現在)
Komaba I CAMPUS MAP (as of July 2015)



Graduate School of Arts and Sciences · College of Arts and Sciences



The University of Tokyo, Komaba

Prospectus **2015-2016**