

The University of Tokyo, Komaba
Graduate School of Arts and Sciences, College of Arts and Sciences

Prospectus

2017-2018



This booklet, *The Prospectus 2017-2018* introduces the various intellectual activities on Komaba Campus, the University of Tokyo, from 2017 to 2018. It also outlines the origin and history of the College and Graduate School of Arts and Sciences, their administrative organizations, curricula, educational and research facilities, as well as a detailed map of Komaba Campus.

Education on Komaba Campus consists of three layers: the Junior and Senior Divisions of the College, and the Graduate School. This multi-layered education and the research that supports it form a core part of all activities conducted at our campus.

The history of research and education in universities has witnessed not only a steady expansion of human intellectual horizons but also an endless specialization in increasingly narrowly demarcated academic disciplines. This latter process of specialization has not gone on without generating the opposite process: integrating distinct disciplines to reach a synthetic understanding of the multifaceted reality of today's world.

The academic staff on Komaba Campus are responsible for a wide range of foundational courses for all freshmen and sophomores of the University of Tokyo. This is the reason why the same academic staff are perfectly equipped also to offer a set of degree programs (B.A., M.A., and Ph.D. programs) over a broad spectrum of academic disciplines. These programs are all known for their interdisciplinary nature.

The intellectual life on Komaba Campus is, thus, diverse but united. This is the source of our vitality, which I believe will keep Komaba always promising.



Dean of the Graduate School of Arts and Sciences
Dean of the College of Arts and Sciences
Atsushi Ishida

Prospectus 2017-2018 The University of Tokyo, Komaba

CONTENTS

Foreword	1
Origin and History	3
Organization	9
Teaching and Instruction	10
Deans Past and Present	15
International Exchange	16
Degree Programs	22
International Exchange Programs	25
University-Wide Programs	26
Educational and Research Programs	27
Affiliated Centers and Initiatives	28
Facilities	29
Periodical Publications	30
Statistics	32
University Facilities around Tokyo	35
Campus Map	36

Prospectus of the
Graduate School of Arts and Sciences / College of Arts and Sciences
The University of Tokyo, Komaba, 2017-2018
English Edition

Edited by the Public Relations Committee, Graduate School of Arts and Sciences

Published by the
Graduate School of Arts and Sciences / College of Arts and Sciences
The University of Tokyo

3-8-1 Komaba, Meguro-ku Tokyo 153-8902
Phone 03-5454-6014
<http://www.c.u-tokyo.ac.jp>

Sobun Printing Co., Ltd.

Organization

The Komaba Campus of the University of Tokyo is home to the College of Arts and Sciences, the Graduate School of Arts and Sciences, the Graduate School of Mathematical Sciences, and a number of advanced research facilities and campus services. What is now the College of Arts and Sciences was founded on May 31, 1949, when the new University of Tokyo started under the present system. Unlike general education sections in other national universities throughout Japan, the College was established as an autonomous institution from the start. The guiding spirits behind this special independence were Tadao Yanaihara, the first Dean of the College, and his colleagues, who believed in an integrated approach to learning aimed at the education of “unbiased individuals with all-round knowledge” and at “fostering the spirit of a lifelong quest for truth.” When most universities in Japan abolished their general education sections in the 1990s, the College of Arts and Sciences took a different course; it carried out a thorough reform of its curriculum and has maintained until today its tradition of providing general, “liberal arts” education to all those entering the university in their first two years (Junior Division). In October 2012, the Junior Division welcomed international students from different parts of the world into its newly established PEAK Program (Programs in English at Komaba), in which students may complete their undergraduate degrees entirely in English.

The Senior Division of the College of Arts and Sciences provides specialized education to students in their third and fourth years. It offers a unique, interdisciplinary, international and advanced curriculum that seeks to realize in a more developed form the ideal of the Junior Division, namely, the search for new knowledge from an international and global point of view that transcends the traditional barriers between disciplines. The Senior Division began with the establishment of the Department of Liberal Arts in 1951, which was followed by that of the Department of Pure and Applied Sciences in 1962, and has constantly been developing and reforming itself in response to the needs of modern society and the changing times. A



Main Gate

◆ Origin and History ◆

thorough reform was carried out again in 2011, resulting in the reorganization of the Senior Division into three new departments. The new Department of Humanities and Social Sciences consists of three sections: Interdisciplinary Cultural Studies, Area Studies, and Social and International Relations. The new Department of Interdisciplinary Sciences, with four divisions in Science and Technology Studies, Geography and Design Sciences, Informatics, and Earth System and Energy Sciences, as well as a sub-program in Evolutionary Sciences, aims at the integration of the arts and the natural sciences. The new Department of Integrated Sciences comprises four divisions in Mathematical Natural Sciences, Matter and Materials Science, Integrated Life Sciences, and Cognitive and Behavioral Sciences, as well as a sub-program in Sports Sciences.

The College instituted its own Graduate Division of International and Interdisciplinary Studies in 1983. This consisted of four programs: Comparative Literature and Culture, Area Studies, International Relations, and Social Relations. Three more programs, Cultural Anthropology, Multi-Disciplinary Sciences, and Culture and Representation, were later added. The next phase of restructuring began with the creation of Language and Information Sciences (1993). In 1994-95, Multi-Disciplinary Sciences was expanded to embrace Life Sciences, Basic Science, and General Systems Studies. In 1996 the existing six programs in Humanities and Social Sciences were reorganized into three sections of Interdisciplinary Cultural Studies, Area Studies, and Advanced Social and International Studies, thus completing the restructuring of the College's graduate division (renamed the Graduate School of Arts and Sciences in 1996). Furthermore, the Graduate School of Mathematical Sciences was established on the Komaba Campus as an independent institution in 1992. A large number of the staff of this graduate school also teach in the Junior Division of the College of Arts and Sciences.

The Graduate School of Arts and Sciences has, for many years, been producing graduates with the vision and broad base of advanced learning necessary for identifying and meeting the multifaceted challenges of the modern world. This tradition



Building 1

led, in April 2004, to the establishment of the Graduate Program on Human Security (HSP) with the cooperation of its five departments. In April 2012, with the participation of its four arts departments, the Graduate School launched a new Graduate Program on Global Humanities (GHP), which aimed to tackle the problems of the modern world through an approach that would transcend the traditional boundaries between disciplines and regions. In October 2012, the Graduate Program on Global Society (GSP [liberal arts]) and the Graduate Program on Environmental Sciences (GPES [integrated liberal arts-sciences]), also began accepting students. Both of these programs allowed students to earn their degrees by following courses taught only in English. Other programs that have been inaugurated at the Graduate School of Arts and Sciences since 2005 include the Science Interpreter Training Program, aimed at the facilitation of communication between the public and the science and technology community; the European Studies Program and the Japan-Germany Inter-Graduate School Program, both aimed at the implementation of interdisciplinary education and research on modern Europe. Furthermore, in 2013, the Integrated Human Sciences Program for Cultural Diversity (IHS) was launched in collaboration with the Graduate School of Interdisciplinary Information Studies.

A number of special centers have been established to support teaching and research at the College and the Graduate School. One of these recent developments is the Institute for Advanced Global Studies (IAGS), which was established in April 2010, incorporating the existing Center for Pacific and American Studies (CPAS) and Center for German and European Studies (DESK), as well as the three newly founded centers for African Studies, Sustainable Peace, and Sustainable Development. The IAGS was joined a year later in April 2011 by two more new centers, one dedicated to Asian Studies and the other to Middle Eastern Studies (UTCMES). The Komaba Organization for Educational Development (KOMED), established in 2005 to further improve undergraduate teaching in the College of Arts and Sciences, merged with the Center for Structuring Life Sciences



Row of ginkgo trees

to form the Komaba Organization for Educational Excellence (KOMEX) in April 2010.

KOMEX underwent reorganization in 2015 and now consists of the following seven divisions: 1) Division of Advanced Education in Science, 2) Division of Science Interpreter Training Program, 3) Division of Social Outreach, 4) Division of Active Learning and Teaching, 5) Division of International Cooperation, 6) Division of First-Year Education, and 7) Special Division of Environmental and Energy Science.

The history of the Komaba Campus has therefore been a tale of growth. When it started in 1949, the Junior Division had two sections for human sciences and two sections for natural sciences. Currently there are three sections for each branch, and the total enrollment in the Junior Division is 6,686, double what it was in 1949. There are 513 students in the Senior Division, and 1,242 Master's and Doctoral students in the Graduate School of Arts and Sciences. The number of full-time faculty members, including professors, associate professors, lecturers and research associates was 372 as of May 1, 2017, which is about 2.6 times as many as in the year of the establishment of the College.



Komaba Communications Plaza

Campus

The Komaba Campus has a long and fascinating history. The campus and its environs were formerly called the Komaba Meadows, the whole area having been set aside as hunting grounds for the ruling Tokugawa family from the time of the eighth Shogun Yoshimune (early 18th century). The estate was said to include a medicinal herb garden as well. The Meadows covered 50 hectares of land, extending over what is now Komaba Park. There is still a small spring on campus, reminding us of how the ancient Musashino plains must have looked.

In 1878, one decade after the Meiji Restoration, the Komaba School of Agriculture was established at the northwestern corner of the grounds, where the College now stands. This School was eventually incorporated into the Tokyo Imperial University, the predecessor of the University of Tokyo, as the Faculty of Agriculture in 1890. Some of the

buildings of the school were destroyed by fire during World War II, and the others were all demolished later.

In 1935 the Faculty of Agriculture was transferred to grounds adjacent to the Hongo Campus, and its place was assumed by the Dai-ichi Koto Gakko, the preeminent three-year preparatory school for admission into Imperial Universities. At about the same time, new buildings were constructed at Komaba, following the architectural styles used for the Hongo Campus. When the Dai-ichi Koto Gakko was incorporated into the postwar University of Tokyo, the Komaba Campus finally became the seat of the University's College of General Education, which was later renamed the College of Arts and Sciences. The College was thus reborn from what was left of the war-damaged buildings of the Dai-ichi Koto Gakko and some temporary structures built after World War II. In addition to renovating these buildings, the College also made great efforts to restore and expand the campus gardens. This is one of the reasons why the Komaba Campus boasts so many old trees, including some very rare ones. Many of the famous cherry trees on campus, including those adorning the edges of the Rugby Field, were planted after the war.

Beginning in the 1980s, major improvements were made to the research facilities with the construction of a number of new buildings mainly in the western half of campus. Since 2000, development has concentrated at the eastern end to improve the classroom facilities, as well as facilities for extracurricular activities. The opening in 2006 of the Komaba Communication Plaza with its facilities for theatrical, musical and other extracurricular activities led to a major change in the image of the campus. The years 2011 to 2014 saw the completion of 21KOMCEE (21 Komaba Center for Educational Excellence), which houses studio-type classrooms and



Cherry trees surrounding the rugby field

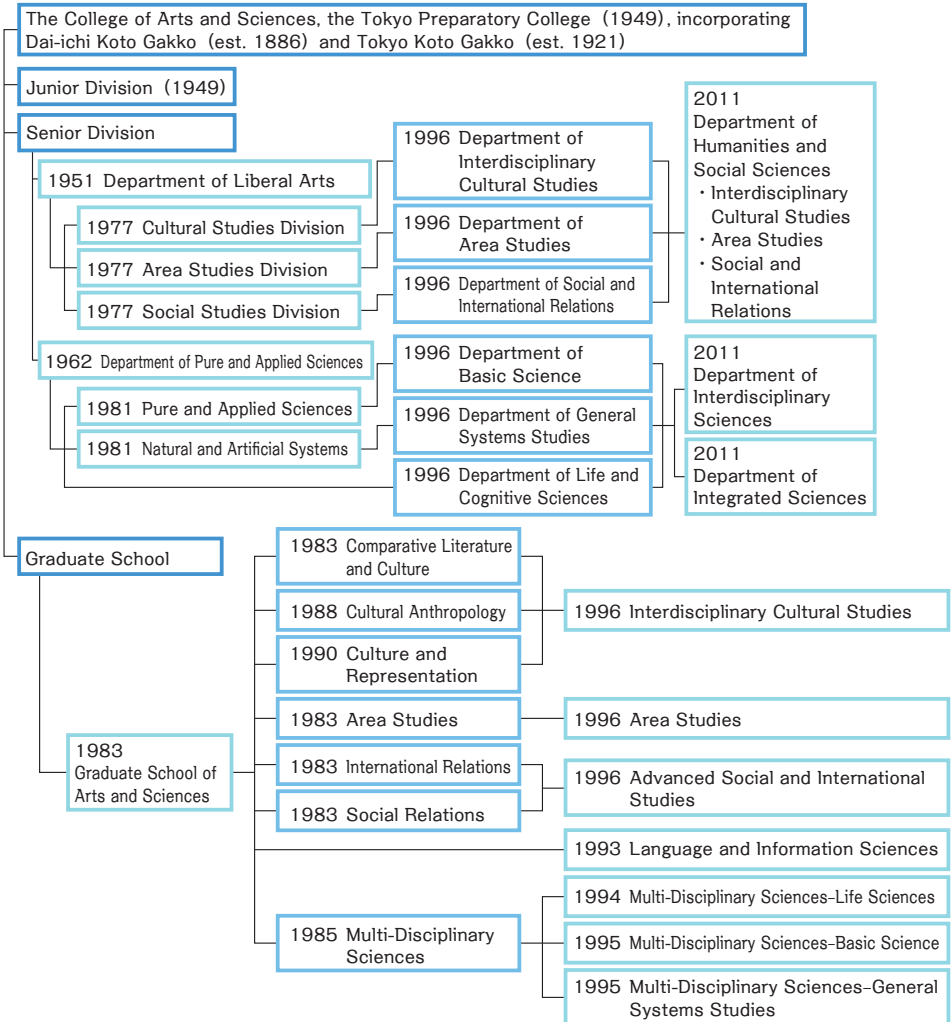


21KOMCEE East

◆ Origin and History ◆

laboratories with state-of-the-art equipment designed to facilitate active learning.

In 2015, Building 6 was renewed and has been reborn as Komaba International Building for Education and Research, and the internationalization of the Komaba campus has become even more dense.





Education at Komaba is provided at three different levels: the Junior Division (1st and 2nd grades), the Senior Division (3rd and 4th grades), and the Graduate School (post-undergraduate).

Junior Division

All undergraduate students of the University of Tokyo undertake their first two years of study (“Junior Division”) at the College of Arts and Sciences on the Komaba Campus. All students belong to one of the six streams for the first one year and half (1S, 1A, 2S semesters): Humanities and Social Sciences (HS) I, II, III or Natural Sciences (NS) I, II, III. During their initial three semesters in the Junior Division, students study subjects included in the following courses: Introductory Courses, Advanced Courses, Integrated Courses and Thematic Courses. In their fourth semester, which is the second half of their sophomore year (2A semester), students combine Junior Division courses and specialized courses, with appropriate shifts in emphasis prescribed by each Faculty or Department in the Senior Division. One year and half after entering The University of Tokyo which is at the end of 2S, students choose which faculty they will major in during the Senior Division. The process of this decision-making is based on elements such as students’ own preference, academic performance and departmental capacity. The curriculum for each of these streams is directed mainly toward specialization in Senior Division undergraduate courses in the following Faculties.

Junior Division	Senior Division
Humanities and Social Sciences I	Faculties of Law, and Arts and Sciences
Humanities and Social Sciences II	Faculties of Economics, and Arts and Sciences
Humanities and Social Sciences III	Faculties of Letters, Education, and Arts and Sciences
Natural Sciences I	Faculties of Engineering, Science, Pharmaceutical Sciences, Agriculture, Medicine, and Arts and Sciences
Natural Sciences II	Faculties of Agriculture, Pharmaceutical Sciences, Science, Engineering, Medicine, and Arts and Sciences
Natural Sciences III	Faculty of Medicine

In 2008, a new admission system started in which there is greater flexibility for students in choosing their departments for senior study.

Starting from 2012, PEAK (Programs in English at Komaba) were founded in Humanities and Social Sciences III and Natural Sciences II. In

these programs, the new academic year starts in the autumn and all the courses are offered in English. The majors for those students in this program are designated as follows: those in Humanities and Social Sciences III will major in “Global-Japan Studies Courses” and those in Natural Sciences will major in “Global-Environmental Studies Courses”.

2013 marked the start of FLY (Freshers’ Leave Year Program). This is a new attempt which aims to nurture a path for each student who is at the very beginning of their college life. In other words, it is designed so that students have an opportunity to actively experience the real world which would help them place their awareness and values into perspective, and simultaneously personally confirm as well as discover the meaning of learning at college.

In April, 2008, ALESS (Active Learning of English for Science Students) started as a required course for all science students in the core English program. The aim of the course is to develop the skills necessary to write a short scientific paper and to make an academic presentation in English. Classes have a maximum of 15 students and are taught in English by teachers who are either native speakers of English or have native-level English language skills. For all students studying humanities and social sciences, ALESA (Active Learning of English for Students of the Arts) started in April, 2013.

From 2013, TLP (Trilingual Program) was launched. This is an attempt to meet the urgent needs in the rapidly globalizing world of nurturing young adults who are capable of fluently handling a foreign language in addition to English. As of 2017, the choice of the second-foreign language in TLP consists of Chinese, German, French and Russian.

Starting in 2015, FLOW (Fluency-Oriented Workshop) has been provided for all undergraduate students as one of the mandatory English courses. The aim of FLOW classes is to train students to acquire logical and fluent English speaking skills.

Besides these initiatives, the whole university has been undertaking a “Total Educational Reform at The University of Tokyo”, and since 2015, small-size classes have been promoted and level-based class formation has been officially launched. Among the foundation courses, along with “First year seminar (HS · NS students)”, advanced courses have been offered (seminar in social sciences, the humanities and natural sciences) which serve as conduits for foundation courses for the ju-

nior and senior divisions. Also, in thematic courses, courses titled “International Learning Workshops”, with a particular focus on nurturing international communication and global perspectives, have started.

The first year humanities seminar which is a required course for HS endeavors to shift the style of learning from the passive acquisition of knowledge, which students are used to through their pre-university education to an appropriate attitude for the world of academia where one is expected to become an active learner who formulates one’s own question, and engages independently in searching for the answer. With such a vision, the seminar aims to not only teach students to obtain basic academic skills but also to internalize academic methods of conducting research such as respecting the work done by previous researchers.

The first year science seminar which is a required course for NS strives to motivate students towards active learning, and the professors at Komaba who excel as top-level researchers in the world offer small-size class tutorials which closely correspond with their own specialties and interests, aiming to provide students with opportunities to obtain scientific skills through such academic experiences.

Senior Division (Specialized Education)

The Senior Division at Komaba, the Faculty of Arts and Sciences, was reorganized into three departments in the academic year 2011. The primary goal of the Senior Division is to foster a broad understanding of the complex issues facing human society in the 21st century. It has been organized based on the assumption that in order to respond effectively to these diverse contemporary problems, students need to be able to discern and transcend existing systems of categorization. Constant attention to curriculum reform within the Senior Division therefore embodies an ongoing search for effective ways to combine a solid academic grounding with cutting-edge specialized education. As a small and highly selective educational unit, the Division is also able to make productive use of students’ input and creativity. From the tradition started at the time of its original establishment as the Department of Liberal Arts and the Department of Pure and Applied Sciences, Komaba’s Senior Division continues to produce widely respected graduates ready to contribute their creative intelligence and problem-solving skills to society. While a significant number choose to pursue graduate studies, oth-

ers pursue a career in civil service, in the corporate world, or in educational or research institutions.

Moreover, there are programs that pull subjects from a wide range of fields which cannot be covered due to the nature of each division of and within each department. Some examples of this program are Global Ethics, Evolution Cognitive Neuro Sciences, Barrier-Free, Scientific Techniques Interpreter, and Global Studies. Since 2015, the Trilingual Program for the senior division has been running.

AIKOM (Abroad in Komaba) Program was launched in 1995 as an undergraduate exchange program at Komaba Campus and then merged into USTEP (University-wide Student Exchange Program) in 2016.

Regarding USTEP, please refer to the following URL.

<http://www.u-tokyo.ac.jp/en/academics/ustep.html>

The Senior Division consists of the following departments.

Department of Humanities and Social Sciences	
Interdisciplinary Cultural Studies	Cultural Anthropology; Culture and Representation; Comparative Literature and Arts; Contemporary Thought and Philosophy; Interdisciplinary Japanese Cultural Studies; Interdisciplinary Language Sciences; Studies on Language, Text and Culture
Area Studies	British Studies; French Studies; German Studies; Russian and East European Studies; Italian / Mediterranean Studies; North American Studies; Latin American Studies; Asian and Japanese Studies; Korean Studies
Social and International Relations	Interdisciplinary Social Sciences; International Relations
International program offered in English	Japan in East Asia

Department of Interdisciplinary Sciences	
Science and Technology Studies; Geography and Design Sciences; Informatics; Earth System and Energy Sciences;	
Evolutionary Sciences	
International program offered in English	Environmental Sciences

Department of Integrated Sciences

Mathematical Natural Sciences; Matter and Materials Science; Integrated Life Sciences; Cognitive and Behavioral Sciences;

Sports Sciences

Graduate School of Arts and Sciences

The Graduate School of Arts and Sciences was established with the primary objective of providing opportunities for students to deepen the knowledge acquired during their undergraduate years. Reflecting its interdisciplinary and international spirit, the Graduate School is committed to train not only scholars in specialized academic fields, but also professionals whose expertise will enable them to make great social contributions in a variety of practical fields.

In the list of departments below, those in parentheses indicate shared inter-departmental specializations.

Language and Information Sciences	Foundations of Scientific Linguistics; Language and Information Analysis; International Communication; Text Analysis; Language Acquisition; Japan and Korea Language Ecology	
Interdisciplinary Cultural Studies	Culture Dynamics; Culture and Representation; Cultural Anthropology; Cultural Complexity; Comparative Literature and Culture; (Comparative Ethnography)	
Area Studies	Multidimensional Analysis of World Structure; European and Russian Area Studies; Mediterranean and Islamic Area Studies; North, Central and South American Area Studies; Asia Pacific Area Studies; (Indian Ocean Area Studies; Pacific and American Area Studies)	
Advanced Social and International Studies	International Cooperation; International Relations; Public Policy; Interdisciplinary Studies in Social Sciences; (Comparative Politics)	
Multidisciplinary Sciences	Life Sciences	Biological Responses to Environmental Information; Bio-informatics; Bio-functionality; Exercise Adaptability; Cognitive and Behavioral Sciences; (Informatics and Media Technology)
	Basic Science	Foundations of Science and Technology; Structures in Natural Sciences; Theory in Complex Systems; Analysis of Material Functionality; Material Measurementation; Material Design
	General Systems Studies	Systems Theory; Information Systems; Global Systems; Complex Systems Planning
Graduate Programs Offered Entirely in English	Graduate Program on Environmental Sciences Graduate Program on Global Society	

Cross-Departmental Programs	Graduate Program on Human Security; European Studies Program; Japanese-German International Joint Graduate School; Global Humanities Program
University-wide Programs	Science Interpreter Training Program; Integrated Human Sciences Program for Cultural Diversity

Sponsored Programs

The following programs have been made possible by external benefactors:

Programs	Benefactors
Sultan Qaboos Chair in Middle Eastern Studies	Sultanate of Oman (April 2011-)
Uehiro Research Division for Philosophy of Co-Existence	The Uehiro Foundation on Ethics and Education (October 2017-)

◆ Deans Past and Present ◆

1949. 5.31 – Tadao YANAIHARA	1984. 1. 1 – Shoichiro KOIDE
1951.12.14 – * Isoji ASO	1985. 1.10 – * Hideo MORI
1951.12.21 – Isoji ASO	1985. 2.16 – Akira TAKEDA
1952.12.22 – Teiji TAKAGI	1987. 2.16 – Hideo MORI
1954. 3.31 – Naoshiro TSUJI	1989. 2.16 – Koichi AOYAGI
1958. 4. 1 – Atsushi KAWAGUCHI	1991. 2.16 – Yoshiya HARADA
1960. 4. 1 – Natsuo SHUMUTA	1993. 2.16 – Shigehiko HASUMI
1963. 4. 1 – Shigeru AIHARA	1995. 2.16 – Munetake ICHIMURA
1966. 4. 1 – Akio ABE	1997. 2.16 – Wataru OMORI
1968. 4. 1 – Mokichiro NOGAMI	1999. 2.16 – Setsuro ASANO
1968.11.14 – Jiro TAMURA	2001. 2.16 – Motoo FURUTA
1969. 2.14 – * Sachio TAKAGI	2003. 2.16 – Makoto ASASHIMA
1969. 2.20 – Tadashi TAKAHASHI	2005. 2.16 – Yoichi KIBATA
1969. 5.26 – Tasuku HARA	2007. 2.16 – Norimichi KOJIMA
1971. 4. 1 – Hajime YAMASHITA	2009. 2.16 – Susumu YAMAKAGE
1972. 3.14 – Sachio TAKAGI	2011. 2.16 – Toshikazu HASEGAWA
1974. 3.14 – Hiroshi KOYAMA	2013. 2.16 – Yojiro ISHII
1976. 3.14 – Shozo OMORI	2015. 4. 1 – Keiichiro OGAWA
1978. 1. 1 – Motoo KAJI	2017. 4. 1 – Atsushi ISHIDA
1980. 1. 1 – Hiroshi ISODA	* (Acting Dean)
1982. 1. 1 – Nagayo HONMA	

Center for International Exchange

The Center for International Exchange promotes globalization on the Komaba Campus by offering support to international students and advice to students interested in studying abroad. It also plans activities to encourage exchange among students from various national and cultural backgrounds and engages in promotional outreach. The Center is comprised of the International Students' Advisory Room (Building 101), the International Research and Cooperation Office (Building 101), and the Globalization Office (21 KOMCEE West). It also collaborates with the Komaba International Office and International Support Office.



Globalization Office

The Globalization Office (GO) helps students on the Komaba Campus experience various types of international experiences both within Japan and abroad. The three main activities are supporting study abroad students, informing students about foreign countries, providing students with opportunities to travel abroad and international exchange.

GO hosts tutoring sessions for international students in the lounge in front of our office every day during lunchtime, 3rd period and 4th period. These sessions are run by local UTokyo students and help provide international students with support both academically and in their daily lives.

For students who want to learn more about countries and regions across the globe, GO also hosts seminars where speakers from foreign embassies and international UTokyo faculty speak about their native countries. In the past speakers from the Italian, Swedish, Australian, United States, French, Brazilian, Indonesian, Turkish and Vietnamese embassies came to speak on a variety of themes.

For students interested in international exchange, GO also hosts field trips and



events for both local and international students, where students can meet each other and make new friends. It also invites local students to the Welcome and Farewell parties for international students. Every year in the fall it hosts a field trip to Asakusa and Ueno which allows international students to get to know local UTokyo students. GO also works with TGIF (Todai Global Interaction Friends), a student-run association for international exchange which hosts lunches for local and international students every Thursday in front of Komaba Coop, to put on various events for international exchange.



For students who are interested in studying abroad at a foreign university, GO runs Study Abroad Advising Sessions, TOEFL and IELTS Information Sessions and Post-Study Abroad Presentation Sessions. It also has both staff and students who are always happy to talk to students about studying abroad, and has a wide variety of publications from foreign universities and information on foreign countries in our library. It also runs study abroad pre-departure orientations for students who have been accepted into the University-wide Student Exchange Program.

All of the events mentioned above are advertised on GO's website and facebook page.

<http://www.globalkomaba.c.u-tokyo.ac.jp>

<https://www.facebook.com/GlobalKomaba>

Global Praxis

Junior Division Thematic Course “Global Praxis” and Senior Division “Global Praxis (Advanced)”

“Global Praxis” is one of several new thematic courses established in 2015. Having had intellectual experiences abroad, participants in Global Praxis courses are expected to expand their knowledge on a topic and cultivate their ability to understand and analyze things from a global perspective. These courses equip students with the fundamental skills necessary for further study, and students from the Humanities, Social Sciences and Natural Sciences are encouraged to participate, share their experiences and study together. Students are expected to actively



participate in the programs and be willing to widen their intellectual scope. Students will obtain credits after completing the course requirements.

Courses are offered to students during summer break (from June to the beginning of September) and winter break (from January to March). Some courses require students to attend lectures before they go on a study-tour abroad.

Courses offered in 2017 S Semester

Course Title	Target Students
Focus on Water: Hungary as a Land of Waters	Junior Division
UTokyo Summer Internship Program in Kashiwa (UTSIP Kashiwa)	Junior Division
Seoul University Summer Program	Junior & Senior Divisions
Summer School for German Language at the University of Bonn	Junior Division
Current Situation of the EU and its Problems	Junior & Senior Divisions/ Graduate School

Courses offered in 2017 A Semester

Course Title	Target Students
Robocon!: Basic Robotics amid a Multicultural Academic Environment in Malaysia	Junior Division
Intensive English: Forging an Advanced Level of English in Australia	Junior Division
Taiwan Seminar for TLP students	Junior Division
Turkmenistan Study Tour on Politics and Peace	Junior Division
Italian Food Culture, Agriculture and Community	Junior Division
Mexico: Diversity and Dynamism	Junior & Senior Divisions
UTokyo/ANU Exchange	Junior & Senior Divisions

Questioning Diversity in Japan and Australia (Tokyo)	Senior Division
Questioning Diversity in Japan and Australia (Australia)	Senior Division

■ Student Report (course taken: UTokyo/ANU Exchange)

Throughout the course I enjoyed a lot, felt a lot, and learned a lot. I not only gained knowledge of Australia, but also gained new perspectives on the Australian way of life. Of course, after listening to many lectures on Australia with the program I was able to understand better about Australian nature and culture. (Natural Science II Stream, 2nd year student)

Global Studies Program (GS) / Global Studies in Asia Program (GSA)

Global Studies Program

The Global Studies Program uses classroom activities to cultivate students with the skills needed to participate in an international academic environment. The program is offered through the Senior Division of the College of Arts and Sciences. The courses hosted by the program and other related activities are open to third and fourth year students from all faculties.

The Global Studies Program offers opportunities for UTokyo Students to learn alongside students from different cultures and backgrounds, acquire a new international perspective, and develop the skills needed to participate in a multi-lingual, multi-cultural world. In “Praxis in Global Liberal Arts,” a required course component for program participants, local UTokyo students work together with international students in discussions, group work and field work. This program is open not only to the students who are familiar with interacting with international students but also to the students who, though not accustomed to international environments, are interested in training themselves for a possible study-abroad experience in the future.



Global Studies in Asia Program

The Global Studies in Asia Program provides a curriculum in English consisting of courses related to Japan. The Program, based at the Komaba Campus, is run by faculty member from the College of Arts and Sciences and is designed for international students who are interested in learning about, experiencing, and analyzing Japan from a variety of perspectives.

The program offers courses in a number of areas, including cultural studies, history, literature, geography, politics, peace-building and environmental sciences. Students who register for the Global Studies in Asia Program will be given plenty of opportunities to interact with local students inside and outside of the classroom. Upon acquiring the required credits in language learning and in specialised courses, students will be awarded an official certificate of completion issued by the Faculty of Arts and Sciences.



Mitaka International Student Dormitory

Mitaka International Student Dormitory is a university housing for both Japanese and international students, mainly those who go to Komaba Campus. As of May 1, 2017, there are 605 rooms. The nationality ratio of the Japanese is 70 %, and that of international students is 30 %. All the rooms are single equipped with a shower and bathroom unit, a mini-kitchen, a desk, a chair, a closet, a bed (without a mattress or sleeping goods), and an air-conditioner. The common tower consists of the general office and a multi-purpose room with a capacity for approximately 200 people; it is a place where Japanese students and international students can interact with each other.



International Students' Advisory Room

International Research and Cooperation Office

International Student Section

International Center Komaba Office

http://www.globalkomaba.c.u-tokyo.ac.jp/en/people_resources/

PEAK (Programs in English at Komaba)

<http://peak.c.u-tokyo.ac.jp/>

“Programs in English at Komaba” (PEAK) is the collective name for the two English-medium programs launched at Komaba in October 2012, the “International Program on Japan in East Asia” (JEA) and the “International Program on Environmental Sciences” (ES). Both of these programs are interdisciplinary degree programs consisting of two years of liberal arts study in the Junior Division and two years of specialisation in the Senior Division. All of the courses available as part of these programs are delivered entirely in English. There is no Japanese language requirement to join either of the programs, but studying Japanese is an important part of the program and Japanese language classes are mandatory during the junior division for both programs.



Graduate Program on Environmental Sciences (GPES)

<http://gps.c.u-tokyo.ac.jp/>

The Organization for Programs on Environmental Sciences was established in May 2012 in order to conduct courses on Environmental Sciences, which consists of both an undergraduate course and advanced level degree programs (offered at both Master and Ph.D. level). All the lectures in the graduate programs are delivered entirely in English by about 60 professors and associate professors of this organization, who belong to a variety of different Faculties, Departments or Institutes of UTokyo. The goal of this program is to provide students with a broad-based, inter and multi-disciplinary understanding of the complex topics of environmental sciences from a wide range of viewpoints. To achieve this, the organization is designed to cover the following six basic areas in environmental sciences: (1) Environmental Principles, (2) Management and Policy, (3) Measurement and Evaluation, (4) Materials, Systems and Dynamics, (5) Energy and Resources, (6) Health and Security. For instance, students can develop a unique set of skills that will enable them to analyze, critique, propose and define environmental policies from economic, cultural and political viewpoints. Professional training in GPES is based on a platform of basic science and technology, which covers aspects from basic physics, chemistry, life sciences and geophysics, to understand environmental processes and utilize methods for measuring global material circulation. Students choose their areas of specialization from a wide range of relevant fields including natural and agricultural sciences, industrial technologies, and social sciences including economics, politics and other related disciplines.

Graduate Program on Global Society (GSP)

<http://gsp.c.u-tokyo.ac.jp/>

The Graduate School of Arts and Sciences launched the Graduate Program on Global Society (GSP) in the fall of 2012.

The program focuses on the changing political, social, ecological, cultural and ethical dimensions of the human condition in the age of globalization. It seeks to cultivate in its students the type of problem-solving leadership that is required in the new, multipolar world. The program offers a curriculum based on critical thinking, practical action, and creative spirit that extends beyond the disciplinary borders of the humanities and social sciences so as to better prepare the next generation both to meet the challenges and to take advantage of the possibilities of our changing global society. It aims to cultivate in its students the qualities of leadership necessary to manage the global issues we confront today and to adapt to those that we will face in the future. The working language of the program is English. Students from all over the world are welcome to participate in the program and work toward their M.A. or Ph.D. degrees in Global Studies.



Graduate Program on
Global Society

Graduate Program on Human Security (HSP)

<http://hsp.c.u-tokyo.ac.jp/>

Human Security is a new concept focusing on the development of a more humane global society for the 21st century. In order to nurture “human assets” who will make innovative contributions in this area, the Graduate Program on Human Security (HSP) was launched in April 2004. HSP offers Master’s and Doctoral courses based on close coordination among the five departments in the Graduate School of Arts and Sciences. Each year around 16 students are accepted into the Master’s course and 4 students into the Doctoral course. These students receive M.A. and Ph.D. degrees in Human Security Studies when they complete the program.

HSP holds a variety of seminars and symposiums throughout the year with practitioners as well as researchers in the field of human security.



European Studies Program (ESP)

http://www.desk.c.u-tokyo.ac.jp/e/education_esp.html

The ESP is a Master's-level program whose aim is to cultivate specialists in European Studies. In the program, students acquire the basic knowledge and methodologies of European Studies through its core courses, including Methodologies of European Studies, Supervised Readings and the European Summer Academy (ESA), which is held for 2 weeks in Germany. ESP students obtain an MA in European Studies by submitting a thesis on a relevant topic and successfully completing the curriculum. After graduation, the students are expected to be instrumental in acting as a bridge between Europe and Japan.



Japanese-German International Joint Graduate School (IGK)

<http://igk.c.u-tokyo.ac.jp/>

The IGK is a program for the promotion of joint research and education conducted by the University of Tokyo and the University of Halle in Germany. This program was started in 2007 with the support of the Japan Society for the Promotion of Science and the German Research Foundation. Every year there are exchanges of graduate students and professors for joint research and education. Furthermore we hold joint classes during the semester and semi-annual joint seminars in Halle and Komaba. In addition, we are conducting an international joint research project concerning the changing modes of civil society from a German-Japanese comparative perspective.



Institute of International Cooperation

<http://www.lap.c.u-tokyo.ac.jp/en/>

Institute of International Cooperation in KOMEX is constituted by Liberal Arts Program (LAP) and International Organization Program (IOP). It is the mission of LAP to pursue the possibility of a new kind of liberal arts education in Asia by transmitting our university's lectures throughout Asia and by encouraging academic exchanges between Japanese and Asian universities. So far LAP has delivered this new kind of liberal arts education, which combines the humanities and sciences, primarily to Chinese universities. Since 2010, LAP has begun student exchange programs twice per year in March and November, having both Japanese and Chinese students take the same fieldworks and collaborate on the subjects dealt with in fieldworks. In 2012, LAP started a new academic exchange program with Melbourne University by sending 2 professors and giving lectures there. From 2013 to 2017, by a donation from ZENSHO HOLDINGS CO., Ltd., the Institute has been cooperating with Nanjing University on the Summer Chinese Language Course. 20 students participate in this every year. IOP was established in 2015 with an aim to strengthen partnership between the UTokyo and international organizations. IOP organizes various classes, seminars and other events to promote knowledge on and collaboration with international organizations. IOP brings selected students to the United Nations Headquarters in New York every year.



TODAI Liberal Arts Program
東京大学教養教育創新工程

East Asia Liberal Arts Initiative (EALAI)

<http://www.ealai.c.u-tokyo.ac.jp/english/>

Originally launched in 2005, the East Asia Liberal Arts Initiative (EALAI) conducts educational and academic exchanges with institutions of higher education both within East Asia and elsewhere, with the aim of establishing new models of liberal arts education suited to the cultural and social needs of the East Asian region. On the strength of the experience gained through the organisation of the annual BESETOHA Forum, a forum for sharing the latest academic and educational achievements between Peking University, Seoul National University, the University of Tokyo, and the Vietnam National University, Hanoi, EALAI has been implementing new innovative educational programs such as the joint e-lecture series on Asian cultures and economies with SNU and VNU-Hanoi, which began in 2008, and the Zensho-UT Japan Studies Program in VNU-Hanoi, launched in 2012. With the selection of the “East Asia Liberal Arts Alliance” project as a MEXT Inter-University Exchange Project (Campus Asia Type A-2) in 2016, EALAI has recently begun a new program for student exchange with its partners in Yuanpei College at Peking University and the College of Liberal Studies at Seoul National University.



Campus Asia

文部科学省 大学の世界展開力強化事業
東京大学教養学部

Science Interpreter Training Program

<http://science-interpreter.c.u-tokyo.ac.jp/en/>

Science Interpreter Training Program is a university-wide “minor” program for students reading any graduate degree - be it Master’s or Doctor’s degree and not only in science, technology, engineering and/or medicine (STEM) but also in humanities and social sciences - at the University of Tokyo, and it aims to nurture future leaders capable of bridging science/technology and society. A notable feature of our program is that it focuses on “what to communicate” as much as “how to communicate.” Our curriculum, lasting a minimum of a year and a half, offers a range of courses for students who passed our selection process to learn ways of critically engaging with various topics concerning science, technology and society and master important skills to communicate about them. Throughout their time with us, the students enjoy generous support from our instructors who are distinguished researchers or practitioners in their own field. The graduates of our program have chosen to pursue diverging career paths, including research and development (R&D) in a private sector, science and technology policy, education, and journalism, although a substantial number of them remain in academia. Since 2012, some of our courses are also available to 3rd- and 4th-year undergraduates who are keen to explore issues of science/technology and society.



Integrated Human Sciences Program for Cultural Diversity (IHS)

<http://ihs.c.u-tokyo.ac.jp/en/>

The Integrated Human Science Program for Cultural Diversity (IHS) is a graduate program selected as a program for leading graduate schools by the Japan Society for the Promotion of Science (JSPS) in the academic year 2013. The Graduate Schools of Arts and Sciences and of Interdisciplinary Information Studies are in charge of running this program. IHS aims to educate the leaders of the next generation who will help build the multicultural society of the future through a coherent five-year Doctoral program that is interdisciplinary and covers a combination of different fields of study. Integrated Human Sciences is a new form of learning that will equip the future leaders of a multicultural society with a broad perspective and the ability to apply their high-level academic knowledge and expertise to the creation of new values. The program aims to produce the leaders of the next generation who will utilize the knowledge and skills gained through the study of Integrated Human Sciences to solve the problems facing the multicultural societies of the 21st century.



The University of Tokyo
Integrated Human Sciences Program
for Cultural Diversity

Institute for Advanced Global Studies (IAGS)	
Center for Pacific and American Studies (CPAS)	http://www.cpas.c.u-tokyo.ac.jp/indexe.html
Deutschland-und Europastudien in Komaba (DESK)	http://www.desk.c.u-tokyo.ac.jp/e/index.html
European Studies Program (ESP)	http://www.desk.c.u-tokyo.ac.jp/e/education_esp.html
Internationales Graduiertenkolleg (IGK)	http://igk.c.u-tokyo.ac.jp/ (in Japanese)
Center for African Studies	http://www.c.u-tokyo.ac.jp/eng_site/info/research/organization/iags/africa/
Research Center for Sustainable Peace	http://cdr.c.u-tokyo.ac.jp/RCSP/en/
Research Center for Sustainable Development	http://www.c.u-tokyo.ac.jp/eng_site/info/research/organization/iags/development/
The University of Tokyo Center for Middle Eastern Studies (UTCMES)	http://park.itec.u-tokyo.ac.jp/UTCMES/en/
Center for Korean Studies	http://www.cks.c.u-tokyo.ac.jp/index.html (in Japanese)
Center for South Asian Studies (TINDAS)	http://www.lu-tokyo.ac.jp/~tindas/tindas_en/index_en.html
Research Division for the Mediterranean Areas	—
Organization for Graduate Program on Environmental Sciences (GPES)	
	http://gps.c.u-tokyo.ac.jp/index.html
Organization for Global Japanese Studies	
	—
Komaba Organization for Educational Excellence (KOMEX)	
	http://www.komex.c.u-tokyo.ac.jp/ (in Japanese)
TODAI Liberal Arts Program (LAP)	http://www.lap.c.u-tokyo.ac.jp/en/
Global Humanities Program (GHP)	
	http://ghp.c.u-tokyo.ac.jp/en/index.html

◆ Affiliated Centers and Initiatives ◆

Research Center for Complex Systems Biology

<http://rcis.c.u-tokyo.ac.jp/index.html> (in Japanese)

Center for Evolutionary Cognitive Sciences

<http://ecs.c.u-tokyo.ac.jp/> (in Japanese)

East Asia Liberal Arts Initiative (EALAI)

<http://www.ealai.c.u-tokyo.ac.jp/english/>

The University of Tokyo Center for Philosophy (UTCP)

http://utcp.c.u-tokyo.ac.jp/index_en.php

Center for Global Communication Strategies (CGCS)

<http://www.cgcs.c.u-tokyo.ac.jp/index.html>

Active Learning of English for Science Students (ALESS)
Active Learning of English for Students of the Arts (ALESA)
Fluency-Oriented Workshop (FLOW)

http://ale.c.u-tokyo.ac.jp/ale_web/

Trilingual Program (TLP)

<http://www.cgcs.c.u-tokyo.ac.jp/tlp/> (in Japanese)

Life Science Network

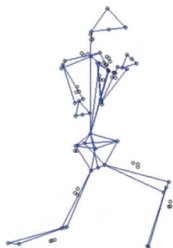
<http://www.lsn.u-tokyo.ac.jp/> (in Japanese)

UTokyo Institute for Diversity & Adaptation of Human Mind (UTIDAHM)

<http://plaza.umin.ac.jp/~UTIDAHM/> (in Japanese)

The University of Tokyo Sports Science Initiative (UTSSI)

<http://utssi.c.u-tokyo.ac.jp/> (in Japanese)





Komaba Library/Arts and Sciences Library	http://www.lib.u-tokyo.ac.jp/en/library/komaba
The Komaba Museum	http://museum.c.u-tokyo.ac.jp/guide_e.html
Komaba Student Counseling Center	http://www.c.u-tokyo.ac.jp/eng_site/consultation/life/
Academic Guidance Center	http://www.c.u-tokyo.ac.jp/eng_site/consultation/shingaku/
Information Education Complex & Information Technology Center	https://sites.google.com/site/iebtokyouniv/
Health Promotion Division, Health Service Center, Komaba Branch	http://www.hc.u-tokyo.ac.jp/hc/en/
Technical Support Section	http://www.c.u-tokyo.ac.jp/eng_site/info/facilities/forexperiment/
Komaba Office of University Research Administration	—
Harassment Counseling Center	http://har.u-tokyo.ac.jp/en/
Disability Services Office	http://ds.adm.u-tokyo.ac.jp/en/
Advanced Research Laboratory	http://www.c.u-tokyo.ac.jp/eng_site/info/facilities/forexperiment/
Komaba Faculty House	http://www.c.u-tokyo.ac.jp/eng_site/info/facilities/io/
Day Care Center	http://www.c.u-tokyo.ac.jp/eng_site/info/facilities/nursery/

◆ Periodical Publications ◆



① LANGUAGE, INFORMATION, TEXT

Edited by the Graduate Department of Language and Information Sciences.

<http://gamp.c.u-tokyo.ac.jp/publication/magazine.html>

② LANGUAGE AND INFORMATION SCIENCES

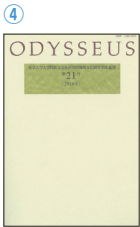
Edited by the Graduate Department of Language and Information Sciences.

<http://gamp.c.u-tokyo.ac.jp/publication/magazine.html>

③ INTERDISCIPLINARY CULTURAL STUDIES

Edited by the Department of Interdisciplinary Cultural Studies, Graduate School of Arts and Sciences.

<http://choiki.c.u-tokyo.ac.jp/>



④ ODYSSEUS: THE PROCEEDINGS OF THE GRADUATE DEPARTMENT OF AREA STUDIES

Edited by the Graduate Department of Area Studies.

<http://ask.c.u-tokyo.ac.jp/journals.html>

⑤ THE KOMABA JOURNAL OF AREA STUDIES

Edited by the Graduate Department of Area Studies.

<http://ask.c.u-tokyo.ac.jp/journals.html>

⑥ ADVANCED SOCIAL AND INTERNATIONAL STUDIES

Edited by the Graduate Department of Advanced Social and International Studies.

<http://www.kiss.c.u-tokyo.ac.jp/asis.html>



⑦ FRONTIÈRE

Edited by the Graduate Department of Multidisciplinary Sciences.

<http://kouiki.c.u-tokyo.ac.jp/flt.html>

⑧ THE ARCHIVE FOR PHILOSOPHY AND THE HISTORY OF SCIENCES

Edited by the Archive for Philosophy and the History of Science Editorial Committee.

⑨ KOMABA STUDIES IN HUMAN GEOGRAPHY

Edited by the Department of Human Geography.



⑩ STUDIES ON INTERNATIONAL RELATIONS

Edited by the Association of International Relations Studies.

⑪ KOMABA JOURNAL OF ENGLISH EDUCATION (KJEE)

Edited by the Department of English Language, College of Arts and Sciences.

⑫ THE THESIS COLLECTION OF THE SCIENCE INTERPRETER TRAINING PROGRAM

Edited by the Division of Science Interpreter Training Program.

<http://science-interpreter.c.u-tokyo.ac.jp/>

13



13 THE BULLETIN OF THE KOMABA STUDENT COUNSELING CENTER

Edited by Komaba Student Counseling Center.

14



14 THE NEWSLETTER OF THE COLLEGE OF ARTS AND SCIENCES

Edited by the Gakubu-ho Committee.
<http://www.c.u-tokyo.ac.jp/info/about/booklet-gazette/bulletin/index.html>

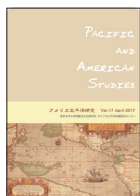
15



15 THE ANNUAL REPORT ON STAFF ACHIEVEMENTS

Edited by the Public Relations Committee.
<http://www.c.u-tokyo.ac.jp/info/about/annualreport/index.html>

16



16 PACIFIC AND AMERICAN STUDIES

Edited by the Center for Pacific and American Studies.
<http://www.cpas.c.u-tokyo.ac.jp/pub/index.html>

17



17 CPAS NEWSLETTER

Edited by the Center for Pacific and American Studies.
<http://www.cpas.c.u-tokyo.ac.jp/pub/index.html>

18



18 EUROPEAN STUDIES

Edited by the Center for German and European Studies.
http://www.desk.c.u-tokyo.ac.jp/j/books_bk_es.html

19



19 DESK NEWSLETTER (Electronic version)

Edited by the Center for German and European Studies.
http://www.desk.c.u-tokyo.ac.jp/j/books_bk_nl.html

20



20 UTCMES NEWSLETTER (Electronic version)

Edited by the Center for Middle Eastern Studies.
<http://park.itsc.u-tokyo.ac.jp/UTCMS/publish>

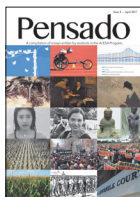
21



21 ALESS: A Collection of Student Papers

Edited by the Center for Global Communication Strategies.

22




22 PENSADO: A compilation of essays written by students in the ALESA Program

Edited by the Center for Global Communication Strategies.

■ Enrollment (Graduate)

Department	Master's	Doctoral	Total
Language and Information Sciences	51	115	166
Interdisciplinary Cultural Studies	80	111	191
Area Studies	56	136	192
Advanced Social and International Studies	75	112	187
Multidisciplinary Sciences	261	221	482
Total	523	695	1,218

■ Research Students

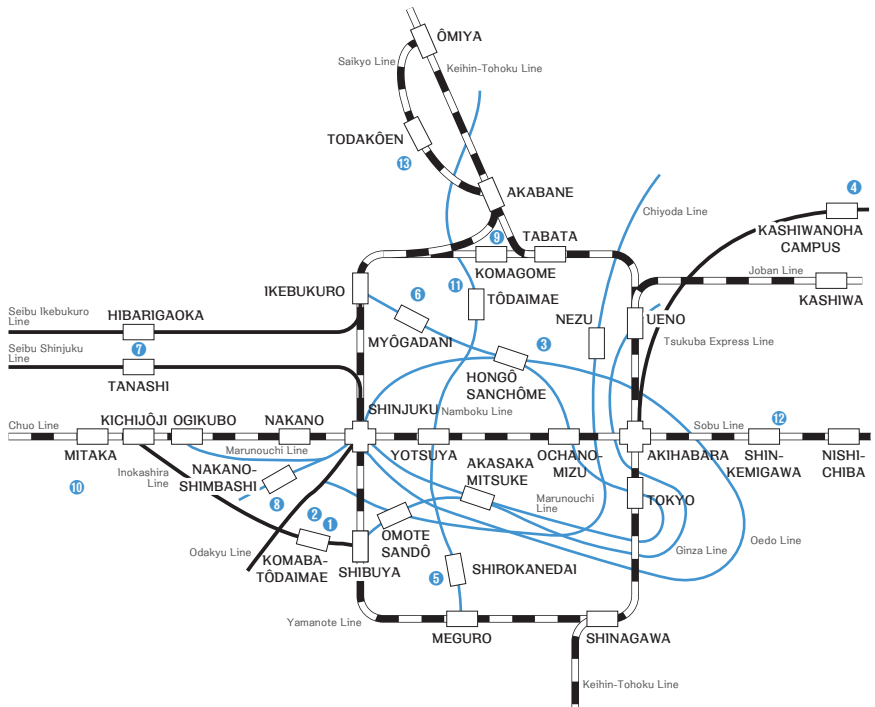
Undergraduate Research Students		4
Undergraduate Auditors		21
Graduate Research Students		18
Graduate Special Research Students		33
Graduate Special Auditors		
Graduate Foreign Research Students		40
Total		116



■ International Students

	Under-graduate	Graduate		Under-graduate Research Students	Under-graduate Special Auditors	Graduate Foreign Research Students	Graduate Research Students	Graduate Special Research Students	Graduate Special Auditors	Total
		Mas-ter's	Doc-toral							
Nepal			1							1
Myanmar			2							2
Thailand	8									8
India	(1) 5					1				(1) 6
Bangladesh	(1) 1									(1) 1
Malaysia	(1) 3	1								(1) 4
Singapore	(5) 11	1			2					(5) 14
Indonesia	2	1	1			1		1		6
Philippines		1	1							2
Hong Kong	2					1		2		5
South Korea	(10) 45	13	43			7	4			(10) 112
Mongolia	2		1							3
Vietnam	(1) 2	1			2					(1) 5
China	(8) 62	52	47		4	22	3	16		(8) 206
Taiwan	(3) 10	3	8			1		1	2	(3) 25
Inner Mongolia			1							1
Iran			1							1
Turkey			1			1				2
Afghanistan		1								1
Morocco	2									2
Australia	(4) 4	1	1							(4) 6
New Zealand	(2) 5									(2) 5
Canada			1							1
U.S.A.	5	1	2		2	3				13
Brazil			1			2				3
Argentina			1							1
Sweden		1								1
Denmark			1							1
U.K.	(1) 1	1	2		3			1		(1) 8
Netherlands								1		1
Germany	1	1	3							5
France	(2) 2	1	2					1	3	(2) 9
Italy					2					2
Austria	1		1							2
Switzerland		1	2		1					4
Poland		1	2		1					4
Bulgaria	1									1
Ukraine		1								1
Russia	(1) 1									(1) 1
Romania	(1) 1		1							(1) 2
Portugal			1	1						2
Belarus	1									1
Slovenia	1									1
Spain					3					3
Latvia						1				1
Total	(41) 179	83	128	1	20	40	7	23	5	(41) 486

Numbers in parentheses indicate students in the Senior Division.



- ① Komaba I Campus: College of Arts and Sciences, Graduate School of Arts and Sciences, Graduate School of Mathematical Sciences
- ② Komaba II Campus: Institute of Industrial Sciences, Research Center for Advanced Science and Technology, Archaeological Excavation Unit, Komaba Open Laboratory, International Lodge (Komaba Lodge)
- ③ Hongo Campus: University Headquarters, General Library, Faculties and Graduate Schools, Hospital, Institutes (Earthquake Research, Social Science, Historiography, Molecular and Cellular Biosciences, Oriental Culture)
- ④ Kashiwa Campus: Graduate School of Frontier Sciences, Institute for Solid State Physics, Institute for Cosmic Ray Research, Atmosphere and Ocean Research Institute, Center for Research into Artifacts, Center for Engineering, Center for Spatial Information Science, Kavli Institute for the Physics and Mathematics of the Universe, International Lodge (Kashiwa Lodge, Kashiwanoha Lodge), Chiba Experimental Station of the Institute of Industrial Science
- ⑤ Shirokanedai Campus: Institute of Medical Science, International Lodge (Shirokane Lodge)
- ⑥ Koishikawa Botanical Garden
- ⑦ Institute for Sustainable Agro-ecosystem Services
- ⑧ Nakano Campus: Secondary School attached to the Faculty of Education
- ⑨ Toshima International Hall of Residence
- ⑩ Mitaka International Hall of Residence
- ⑪ Oiwake International Hall of Residence, Oiwake International Lodge
- ⑫ Kemigawa Athletic Ground
- ⑬ Boat House

<http://www.u-tokyo.ac.jp/en/about/access.html>



東京大学 大学院総合文化研究科・教養学部

The University of Tokyo, Komaba

Graduate School of Arts and Sciences, College of Arts and Sciences

3-8-1 Komaba, Meguro-ku, Tokyo 153-8902, Japan

Tel. +81-3-5454-6014

http://www.c.u-tokyo.ac.jp/eng_site/

